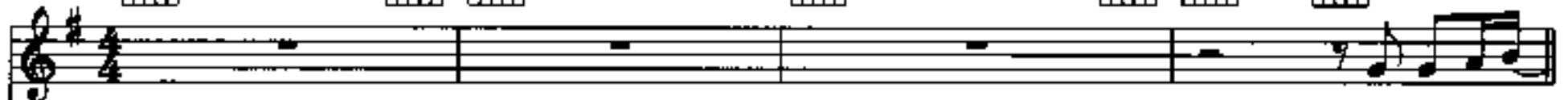
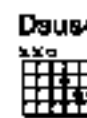
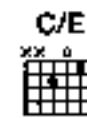
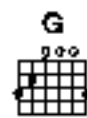
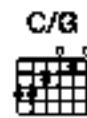


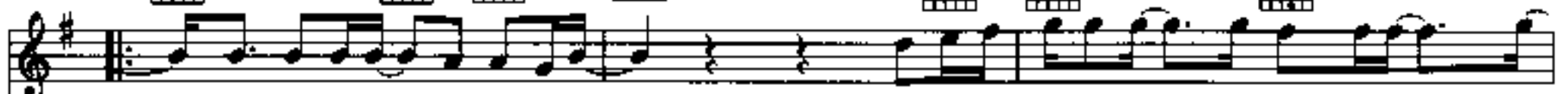
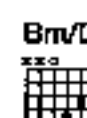
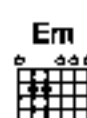
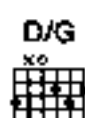
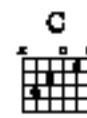
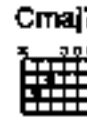
Too much love will kill you

Words and Music by
Brian May, Frank Musker
and Elizabeth Lamers

(♩ = 78)

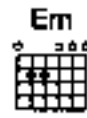
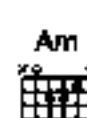
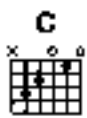


I'm just the pie -



ces of the man I used to be, —
sha-dow of the man I used to be, —

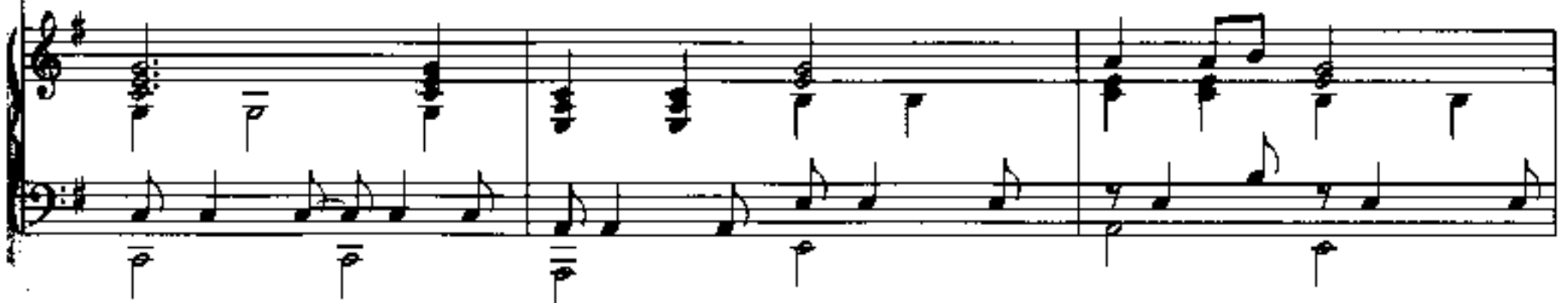
too ma-ny bit-ter tears are rain - in' down on
and it seems like there's no way out of this



me. —
for me. —

I'm far a-way from home,
I used to bring you sun-shine,

and I've been fac-ing this a-lone — for much too
now all I ev - er do is bring you



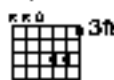
Dsus4



D



C/D



G



C



long-
down.

I feel like no-one ev - er told the truth to
How would it be if you were stand-ing in my

G



D/G



Em



Bm/D



me,
shoes?

'bout grow-in' up
Can't you see

and what a strug-gle it would
it's im - pos - si - ble to

C



Am



Em



be...
choose?

In my tang - led state of mind, I've been
No there's no mak - ing sense of it,

Am



Em



Dsus4



D



C/D



look-in' back to find where I went wrong.
ev - 'ry way I go I have to lose,

ooh.

G C Em D G C

Too much love will kill you if you can't make up your mind, torn be-tween the lo-ver, and the
 Too much love will kill you just as sure as none at all. _ It-'ll drain the power that's in you, make you

Em D G/B C G/D rit. C#m7dim5

love you leave be-hind. _ You're head-ed for _ dis-as-ter, 'cause you ne-ver read the signs,
 plead and scream and crawl. _ And the pain will make you cra-zy, you're the vic-tim of _ your crime,

a tempo

G/D C/D G D/G C/G

too much love_ will kill_ you_ ev - 'ry time.
 too much love_ will kill_ you_ ev - 'ry time.

G C Em D G C

Too much love will kill you, it will make your life a lie, yes, too much love will kill you, and you

Em D G/B C G/D Cm7dim5

won't understand why. You'll give your life, you'll sell your soul, but here it comes a-gain,

rit. G/D Cm/D

too much love will kill you in the

a tempo E Eadd#11 E Eadd#11 G

end, in the end.