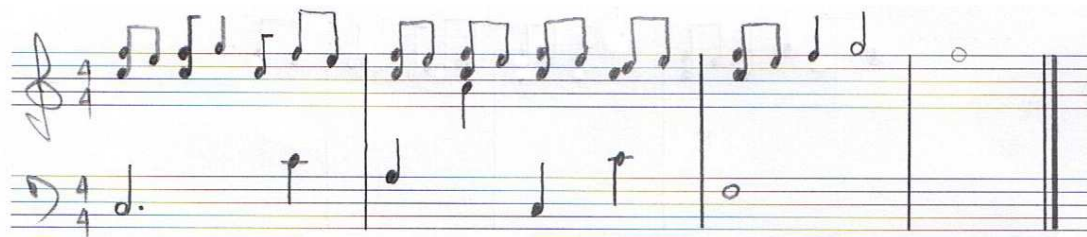
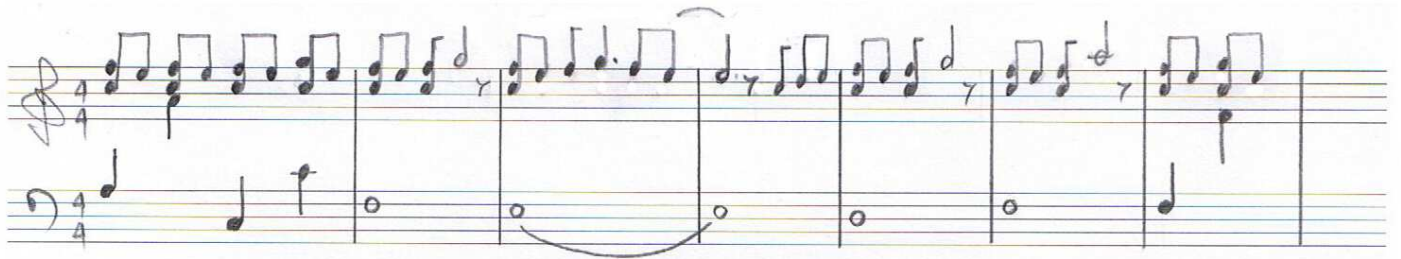
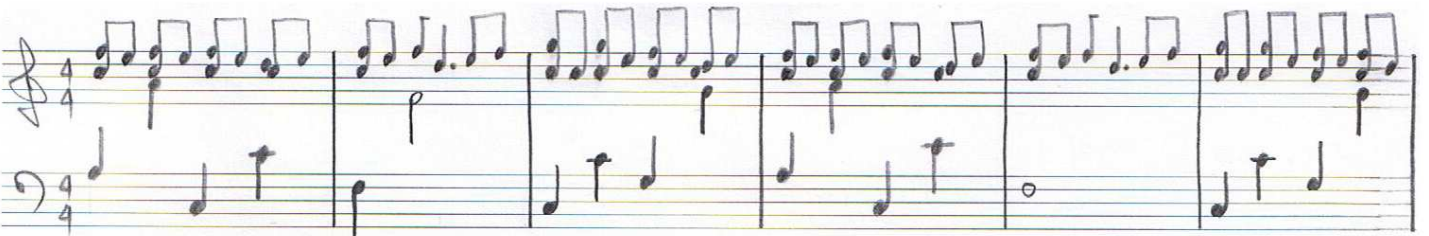
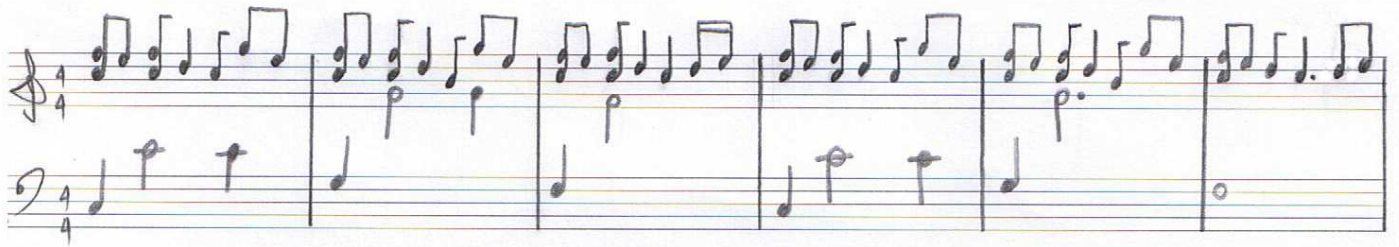


# सिद्धार्थ रोग वरुण विहार

By: Arthizta



Handwritten musical notation for the first system. The treble clef staff (top) is in 4/4 time and contains four measures of music. The first measure has a chord of G4, B4, D5. The second measure has a chord of A4, C5, E5. The third measure has a chord of B4, D5, F#5 with an accent mark over the F#5. The fourth measure has a chord of C5, E5, G5. The bass clef staff (bottom) contains four measures of whole notes: G2, A2, B2, and C3.

Handwritten musical notation for the second system. The treble clef staff (top) is in 4/4 time and contains four measures of music. The first measure has a chord of G4, B4, D5. The second measure has a chord of A4, C5, E5 with an accent mark over the E5. The third measure has a chord of B4, D5, F#5. The fourth measure has a chord of C5, E5, G5. The bass clef staff (bottom) contains four measures of whole notes: G2, A2, B2, and C3.

Handwritten musical notation for the third system. The treble clef staff (top) is in 4/4 time and contains four measures of music. The first measure has a chord of G4, B4, D5. The second measure has a chord of A4, C5, E5. The third measure has a chord of B4, D5, F#5. The fourth measure has a chord of C5, E5, G5 with an accent mark over the G5. The bass clef staff (bottom) contains four measures of whole notes: G2, A2, B2, and C3.