

# GRAND CANYON

59

R

C3 ballad 2  $\text{♩} = 72$   
9b u2 11

Words and Music by  
WAYNE KIRKPATRICK

Rhythmically, in four

$\text{♩} = 72$

Bb7sus

Eb

Bb7sus

Eb

Ab

Eb

mp

Ab

Eb

Bb7sus

Eb

Bb7sus

Eb

mp

I've

Ab

Eb

Eb2sus

Bb7

D

Eb

9

seen You calm the wa - ters rag - ing  
had the faith that gave me strength For

In the riv - ers of my mind.  
mov - ing an - y moun - tain - side.

Your  
I've

Bb7sus

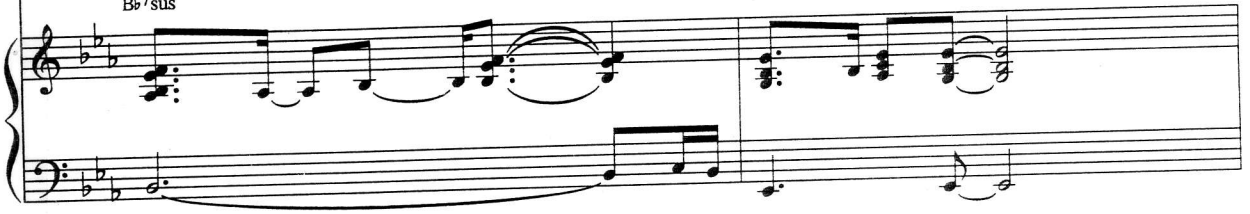
Eb

(mp)



Spir - it blows a breeze in - to my soul. And I've  
felt the sol - id ground be - neath my feet. But I've

Bb7sus Eb Ab Eb Eb



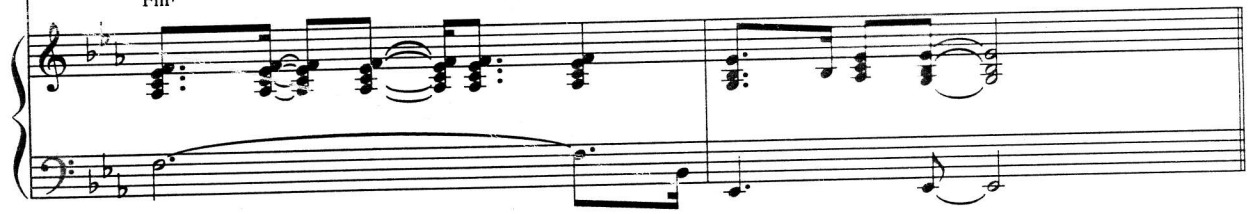
felt the fire That warms the heart, Know - ing that it comes from You; Then I've  
had the bread of i - dle - ness While drink - ing from a well of doubt, And it

Bb7sus Eb



let it turn as cold as a stone. Oh,  
shakes the core of all I be - lieve. Oh,

Fm7 Eb Ab Eb Eb



17  $\%$

Some-times I feel like I'm As close as Your shad-ow; and

*B $\flat$* /*D* *A $\flat$* /*C* *B $\flat$*

Some-times I feel like I'm Look-ing up at You From the bot-tom of the

*B $\flat$* /*D* *A $\flat$*  *B $\flat$*

21 *f* (add cues: 2nd & 3rd times)

Grand Can-yon, so small and so far, From the Grand Can-yon With a

*A $\flat$*  *E $\flat$*  *B $\flat$ 7sus* *E $\flat$*  *A $\flat$* /*C* *E $\flat$* /*B $\flat$*

hole in my heart. And I'm a long way from where I know

*B $\flat$ 7sus* *E $\flat$*  *B $\flat$* /*D* *Cm7*

3rd time to Coda ⊕

I need to be When there's a Grand Can - yon Be - tween.

Bb  
D

Ab

Eb

1.

You and me.

Bb7sus

Eb

Bb7sus

Eb

Bb7sus

Eb

mp

2.

I've You and me. when there's a

Ab6

Eb

Bb7

D

Eb

Bb7sus

Bb7

Eb

Grand Can - yon Be - tween You and me.

Ab  
C

Eb  
Bb

Bbsus

Bb

Eb

Chords:  $A^b$   $E^b$   $B^b$   $E^b$   $A^b$   $E^b$

Chords:  $B^b$   $E^b$   $B^b$   $A^b$   $B^b$   $A^b$   
 $E^b$   $E^b$   $E^b$   $E^b$

*D.S. al Coda*  $\text{\textcircled{C}}$

Chords:  $A^b$   $B^b$   $A^b$   $B^b$   
 $C$   $D$   $C$   $B^b$

$\text{\textcircled{C}}$  CODA

Grand Can - yon Be - tween You and me, When there's a

Chords:  $A^b$   $E^b$   $B^b7sus$   $B^b7$   $E^b$

Grand Canyon, Susan Ashton

Grand, Grand Can - yon — Be - tween — You — and me.

Ab C Eb Bb Bb7sus

Detailed description: This system contains the first line of music. The vocal line is in a treble clef with a key signature of two flats (Bb, Eb) and a 7/8 time signature. The lyrics are "Grand, Grand Can - yon — Be - tween — You — and me." The piano accompaniment is in a grand staff (treble and bass clefs). The first measure has a chord of Ab over C. The second measure has Eb over Bb. The third measure has Bb7sus. There are some rests in the vocal line.

Oh

Bb7sus Eb Bb7sus Eb

Detailed description: This system contains the second line of music. The vocal line has the lyric "Oh" and a long note. The piano accompaniment continues. The first measure has Bb7sus, the second has Eb, the third has Bb7sus, and the fourth has Eb. There are some rests in the vocal line.

Ab C Eb Cm7 Bb Eb Bb7sus Eb

Detailed description: This system contains the third line of music. The piano accompaniment continues. The first measure has Ab over C, the second has Eb, the third has Cm7 over Bb, the fourth has Eb, the fifth has Bb7sus, and the sixth has Eb. There is a triplet of eighth notes in the bass line of the fifth measure.

Bb7sus Eb Ab6 C Eb Bb Bb7 Eb D 1.

Detailed description: This system contains the fourth line of music. The piano accompaniment continues. The first measure has Bb7sus, the second has Eb, the third has Ab6 over C, the fourth has Eb over Bb, the fifth has Bb7, and the sixth has Eb. The system ends with a double bar line and a first ending bracket over a final chord.