

# **Major Triads**

**Warm Up Exercises**

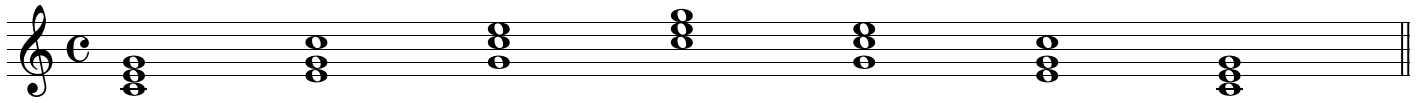
**Fixed Position Exercises**

**Voiceleading Exercises**

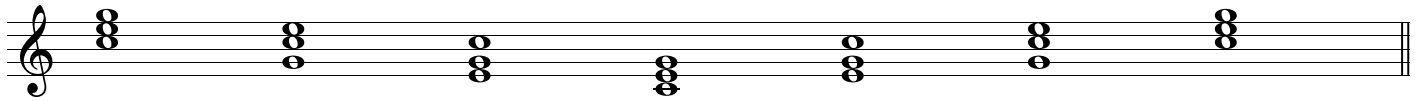
# TRIO WARM UPS: MAJOR

By: Carlos Campos

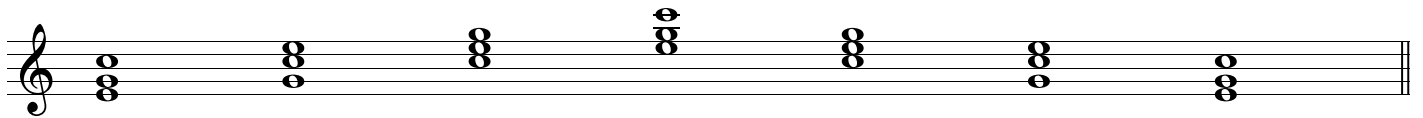
1) Root Position: Ascending



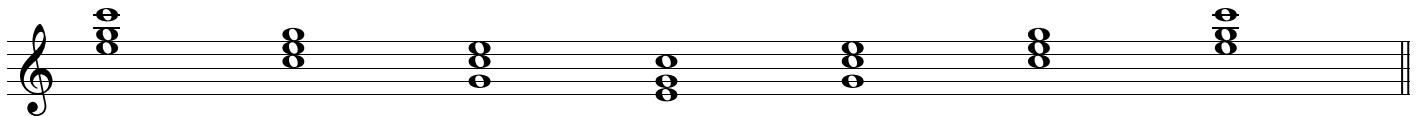
2) Root Position: Descending



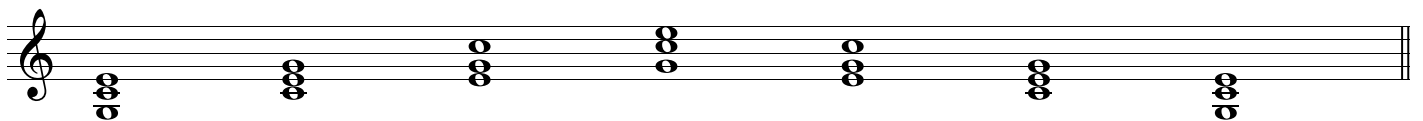
3) 1st. Inversion: Ascending



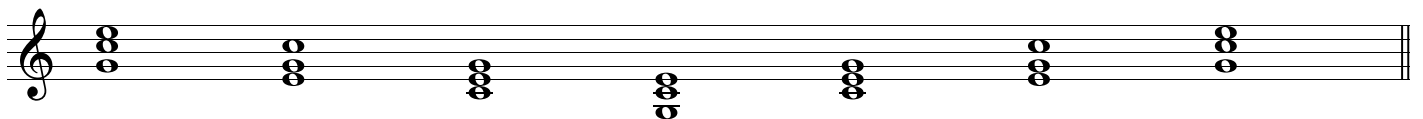
4) 1st. Inversion: Descending



5) 2nd. Inversion: Ascending



6) 2nd. Inversion: Descending



\* Work with these exercises in every key.

# MAJOR TRIADS (ROOT)

Left Hand Fingering: 5-3-1 / Right Hand Fingering: 1-3-5

By: Carlos Campos

Three staves of musical notation in treble clef, C major, 4/4 time. Each staff contains four measures of a major triad, indicated by a slash (/) in each measure. The triads are: C, F, B $\flat$ , E $\flat$  (Staff 1); A $\flat$ , D $\flat$ , G $\flat$ , B (Staff 2); E, A, D, G (Staff 3). The first staff starts with a repeat sign, and the third staff ends with a double bar line and repeat dots.

Practice all the exercises through the cycle of fifths.  
Practice ex.: 1, 2 and 3 with the Left Hand, then the Right Hand, then with Both Hands at the same time.

Exercise 1: Treble clef, C major, 4/4 time. Four measures of major triads: C, F, B $\flat$ , E $\flat$ . Each measure contains four chords. Fingering: 1 3 5 3 1 3 5 3 for C; 1 3 5 3 1 3 5 4 for F; 1 3 5 3 1 3 5 3 for B $\flat$ ; 1 3 5 3 1 3 5 4 for E $\flat$ . Ends with "Go on..."

Exercise 2: Treble clef, C major, 4/4 time. Four measures of major triads: C, F, B $\flat$ , E $\flat$ . Each measure contains four chords. Fingering: 1 3 5 3 1 3 5 3 for C; 1 3 5 3 1 3 5 4 for F; 1 3 5 3 1 3 5 3 for B $\flat$ ; 1 3 5 3 1 3 5 4 for E $\flat$ . Ends with "Go on..."

Exercise 3: Treble clef, C major, 4/4 time. Four measures of major triads: C, F, B $\flat$ , E $\flat$ . Each measure contains four chords. Fingering: 1 3 5 3 1 3 5 3 for C; 1 3 5 3 1 3 5 4 for F; 1 3 5 3 1 3 5 3 for B $\flat$ ; 1 3 5 3 1 3 5 4 for E $\flat$ . Ends with "Go on..."

Exercise 4: Grand staff, C major, 4/4 time. Four measures of major triads: C, F, B $\flat$ , E $\flat$ . Each measure contains four chords. Fingering: 1 3 5 3 1 3 5 3 for C; 1 3 5 3 1 3 5 4 for F; 1 3 5 3 1 3 5 3 for B $\flat$ ; 1 3 5 3 1 3 5 4 for E $\flat$ . Ends with "Go on..."

# MAJOR TRIADS (ROOT)

5 C F B $\flat$  E $\flat$  Go on...

Exercise 5: Treble clef with chords C, F, B $\flat$ , E $\flat$ . Bass clef with a simple accompaniment pattern.

6 C F B $\flat$  E $\flat$  Go on...

Exercise 6: Treble clef with a simple accompaniment pattern. Bass clef with chords C, F, B $\flat$ , E $\flat$ .

7 C F B $\flat$  E $\flat$  Go on...

Exercise 7: Treble clef with chords C, F, B $\flat$ , E $\flat$ . Bass clef with a simple accompaniment pattern.

8 C F B $\flat$  E $\flat$  Go on...

Exercise 8: Treble clef with chords C, F, B $\flat$ , E $\flat$ . Bass clef with a simple accompaniment pattern.

9 C F B $\flat$  E $\flat$  Go on...

Exercise 9: Treble clef with chords C, F, B $\flat$ , E $\flat$ . Bass clef with a simple accompaniment pattern.

# MAJOR TRIADS (1ST. INV.)

Left Hand Fingering: 5-3-1 / Right Hand Fingering: 1-2-5

By: Carlos Campos

C F B $\flat$  E $\flat$

A $\flat$  D $\flat$  G $\flat$  B

E A D G

Practice all the exercises through the cycle of fifths.

Practice ex.: 1, 2 and 3 with the Left Hand, then the Right Hand, then with Both Hands at the same time.

1 C F B $\flat$  E $\flat$  Go on...

2 C F B $\flat$  E $\flat$  Go on...

3 C F B $\flat$  E $\flat$  Go on...

1 2 5 2 1 2 5 2 1 2 5 2 1 2 5 3 1 2 5 2 1 2 5 2 1 2 5 2 1 2 5 3

5 3 1 3 5 3 1 5 4 2 1 3 5 3 1 2 5 3 1 3 5 3 1 5 4 2 1 3 5 3 1 2

4 C F B $\flat$  E $\flat$  Go on...

# MAJOR TRIADS (1ST. INV.)

5

C F B $\flat$  E $\flat$  Go on...

Exercise 5: Treble clef, four measures. Chords: C, F, B $\flat$ , E $\flat$ . Bass clef accompaniment with dotted half notes.

6

C F B $\flat$  E $\flat$  Go on...

Exercise 6: Treble clef, four measures. Chords: C, F, B $\flat$ , E $\flat$ . Bass clef accompaniment with dotted half notes.

7

C F B $\flat$  E $\flat$  Go on...

Exercise 7: Treble clef, four measures. Chords: C, F, B $\flat$ , E $\flat$ . Bass clef accompaniment with chords.

8

C F B $\flat$  E $\flat$  Go on...

Exercise 8: Treble clef, four measures. Chords: C, F, B $\flat$ , E $\flat$ . Bass clef accompaniment with chords.

9

C F B $\flat$  E $\flat$  Go on...

Exercise 9: Treble clef, four measures. Chords: C, F, B $\flat$ , E $\flat$ . Bass clef accompaniment with chords.

# MAJOR TRIADS (2ND. INV.)

Left Hand Fingering: 5-2-1 / Right Hand Fingering: 1-3-5

By: Carlos Campos

C F B $\flat$  E $\flat$

A $\flat$  D $\flat$  G $\flat$  B

E A D G

Practice all the exercises through the cycle of fifths.

Practice ex.: 1, 2 and 3 with the Left Hand, then the Right Hand, then with Both Hands at the same time.

1 C F B $\flat$  E $\flat$  Go on...

2 C F B $\flat$  E $\flat$  Go on...

3 C F B $\flat$  E $\flat$  Go on...

1 3 5 3 1 3 5 3 1 3 5 3 1 3 5 4 1 3 5 3 1 3 5 3 1 3 5 3 1 3 5 4

5 2 1 2 5 2 1 5 5 2 1 2 5 2 1 2 5 2 1 2 5 2 1 5 5 2 1 2 5 2 1 2

4 C F B $\flat$  E $\flat$  Go on...

# MAJOR TRIADS (2ND. INV.)

5 C F B $\flat$  E $\flat$  Go on...

6 C F B $\flat$  E $\flat$  Go on...

7 C F B $\flat$  E $\flat$  Go on...

8 C F B $\flat$  E $\flat$  Go on...

9 C F B $\flat$  E $\flat$  Go on...



# MAJOR TRIADS (VOICE LEADING): ROOT POSITION

By: Carlos Campos

1) Ascending: Root Position -> 2nd. Inv. -> 1st Inv. / Descending: Root Position -> 1st. Inv. -> 2nd. Inv.

Exercise 1: Ascending and Descending Major Triads. The first staff shows an ascending sequence: C (Root Position), F (2nd. Inv.), B $\flat$  (1st Inv.), E $\flat$  (2nd. Inv.), A $\flat$  (1st Inv.), D $\flat$  (2nd. Inv.), F $\sharp$  (1st Inv.), B (2nd. Inv.), E (1st Inv.), A (2nd. Inv.), D (1st Inv.), G (2nd. Inv.), C (1st Inv.). The second staff shows a descending sequence: C (Root Position), G (1st Inv.), D (2nd. Inv.), A (1st Inv.), E (2nd. Inv.), B (1st Inv.), F $\sharp$  (2nd. Inv.), D $\flat$  (1st Inv.), A $\flat$  (2nd. Inv.), E $\flat$  (1st Inv.), B $\flat$  (2nd. Inv.), F (1st Inv.), C (2nd. Inv.).

2) Block Chords through cycle of Fifths. Practice: a) Right Hand b) Left Hand c) Both Hands

Exercise 2: Block Chords through cycle of Fifths. The staff shows a sequence of block chords in 4/4 time: C, F, B $\flat$ , E $\flat$ , A $\flat$ , D $\flat$ , F $\sharp$ . The sequence ends with "Go on..."

3) Broken Chords through cycle of Fifths. Practice: a) Right Hand b) Left Hand c) Both Hands

Exercise 3: Broken Chords through cycle of Fifths. The staff shows a sequence of broken chords in 4/4 time: C, F, B $\flat$ , E $\flat$ , A $\flat$ , D $\flat$ . The sequence ends with "Go on..."

4) Arpeggiated Chords through cycle of Fifths. Practice: a) Right Hand b) Left Hand c) Both Hands

Exercise 4: Arpeggiated Chords through cycle of Fifths. The staff shows a sequence of arpeggiated chords in 4/4 time: C, F, B $\flat$ , E $\flat$ , A $\flat$ , D $\flat$ . The sequence ends with "Go on..."

5) Block Chords with bass line through cycle of Fifths.

Exercise 5: Block Chords with bass line through cycle of Fifths. The staff shows a sequence of block chords in 4/4 time: C, F, B $\flat$ , E $\flat$ , A $\flat$ , D $\flat$ , F $\sharp$ . The sequence ends with "Go on..."

## MAJOR TRIADS (VOICE LEADING): ROOT POSITION

6) Broken Chords with bass line through cycle of Fifths.

Musical score for exercise 6, showing six measures of music in 4/4 time. The chords are C, F, Bb, Eb, Ab, and Db, with the instruction "Go on..." after the final measure. The bass line consists of a descending sequence of notes: C, F, Bb, Eb, Ab, Db. The right hand plays broken chords in a rhythmic pattern.

7) Arpeggiated Chords with bass line through cycle of Fifths.

Musical score for exercise 7, showing six measures of music in 4/4 time. The chords are C, F, Bb, Eb, Ab, and Db, with the instruction "Go on..." after the final measure. The bass line is identical to exercise 6. The right hand plays arpeggiated chords.

8) Block Chords with melody through cycle of Fifths.

Musical score for exercise 8, showing six measures of music in 4/4 time. The chords are C, F, Bb, Eb, Ab, and Db, with the instruction "Go on..." after the final measure. The bass line consists of block chords. The right hand plays a melody consisting of a descending sequence of notes: C, F, Bb, Eb, Ab, Db.

9) Broken Chords with melody through cycle of Fifths.

Musical score for exercise 9, showing six measures of music in 4/4 time. The chords are C, F, Bb, Eb, Ab, and Db, with the instruction "Go on..." after the final measure. The bass line consists of broken chords. The right hand plays a melody consisting of a descending sequence of notes: C, F, Bb, Eb, Ab, Db.

10) Arpeggiated Chords with melody through cycle of Fifths.

Musical score for exercise 10, showing six measures of music in 4/4 time. The chords are C, F, Bb, Eb, Ab, and Db, with the instruction "Go on..." after the final measure. The bass line consists of arpeggiated chords. The right hand plays a melody consisting of a descending sequence of notes: C, F, Bb, Eb, Ab, Db.

# MAJOR TRIADS (VOICE LEADING): 1ST. INVERSION

By: Carlos Campos

1) Ascending: 1st. Inv. -> Root -> 2nd Inv. / Descending: 1st. Inv. -> 2nd. Inv. -> Root

Exercise 1: Ascending and descending voice leading for major triads in 1st inversion. The first staff shows an ascending sequence: C (1st inv), F (1st inv), Bb (1st inv), Eb (1st inv), Ab (1st inv), Db (1st inv), F# (1st inv), B (1st inv), E (1st inv), A (1st inv), D (1st inv), G (1st inv), C (Root). The second staff shows a descending sequence: C (1st inv), G (1st inv), D (1st inv), A (1st inv), E (1st inv), B (1st inv), F# (1st inv), Db (1st inv), Ab (1st inv), Eb (1st inv), Bb (1st inv), F (1st inv), C (Root).

2) Block Chords through cycle of Fifths. Practice: a) Right Hand b) Left Hand c) Both Hands

Exercise 2: Block chords through the cycle of fifths. The sequence of chords is: C, F, Bb, Eb, Ab, Db, F#. The notation is in 4/4 time and includes a 'Go on...' instruction.

3) Broken Chords through cycle of Fifths. Practice: a) Right Hand b) Left Hand c) Both Hands

Exercise 3: Broken chords through the cycle of fifths. The sequence of chords is: C, F, Bb, Eb, Ab, Db. The notation is in 4/4 time and includes a 'Go on...' instruction.

4) Arpeggiated Chords through cycle of Fifths. Practice: a) Right Hand b) Left Hand c) Both Hands

Exercise 4: Arpeggiated chords through the cycle of fifths. The sequence of chords is: C, F, Bb, Eb, Ab, Db. The notation is in 4/4 time and includes a 'Go on...' instruction.

5) Block Chords with bass line through cycle of Fifths.

Exercise 5: Block chords with a bass line through the cycle of fifths. The sequence of chords is: C, F, Bb, Eb, Ab, Db, F#. The notation is in 4/4 time and includes a 'Go on...' instruction.

# MAJOR TRIADS (VOICE LEADING): 1ST. INVERSION

6) Broken Chords with bass line through cycle of Fifths.

Musical notation for exercise 6, showing a sequence of six chords: C, F, Bb, Eb, Ab, and Db. The bass line follows a cycle of fifths (C-F-Bb-Eb-Ab-Db). The right hand plays broken chords in a rhythmic pattern.

7) Arpeggiated Chords with bass line through cycle of Fifths.

Musical notation for exercise 7, showing a sequence of six chords: C, F, Bb, Eb, Ab, and Db. The bass line follows a cycle of fifths. The right hand plays arpeggiated chords.

8) Block Chords with melody through cycle of Fifths.

Musical notation for exercise 8, showing a sequence of six chords: C, F, Bb, Eb, Ab, and Db. The bass line plays block chords, and the right hand plays a melody through the cycle of fifths.

9) Broken Chords with melody through cycle of Fifths.

Musical notation for exercise 9, showing a sequence of six chords: C, F, Bb, Eb, Ab, and Db. The bass line plays broken chords, and the right hand plays a melody through the cycle of fifths.

10) Arpeggiated Chords with melody through cycle of Fifths.

Musical notation for exercise 10, showing a sequence of six chords: C, F, Bb, Eb, Ab, and Db. The bass line plays arpeggiated chords, and the right hand plays a melody through the cycle of fifths.

# MAJOR TRIADS (VOICE LEADING): 2ND. INVERSION

By: Carlos Campos

1) Ascending: 2nd. Inv. -> 1st Inv. -> Root / Descending: 2nd. Inv. -> Root -> 1st. Inv.

C F B $\flat$  E $\flat$  A $\flat$  D $\flat$  F $\sharp$  B E A D G C

C G D A E B F $\sharp$  D $\flat$  A $\flat$  E $\flat$  B $\flat$  F C

Detailed description: This exercise consists of two staves of music. The first staff shows an ascending sequence of major triads in 2nd inversion: C (F, C, G), F (C, F, A), B-flat (F, B-flat, D), E-flat (C, E-flat, G), A-flat (F, A-flat, C), D-flat (C, D-flat, F), F-sharp (C, F-sharp, A), B (F, B, D), E (C, E, G), A (C, A, E), D (C, D, F), G (C, G, B), and C (C, E, G). The second staff shows a descending sequence: C (C, E, G), G (C, B, D), D (C, B, D), A (C, B, D), E (C, B, D), B (C, B, D), F-sharp (C, B, D), D-flat (C, B, D), A-flat (C, B, D), E-flat (C, B, D), B-flat (C, B, D), F (C, B, D), and C (C, E, G).

2) Block Chords through cycle of Fifths. Practice: a) Right Hand b) Left Hand c) Both Hands

C F B $\flat$  E $\flat$  A $\flat$  D $\flat$  F $\sharp$  Go on...

Detailed description: This exercise is a single staff of music in 4/4 time. It features a sequence of block chords in 2nd inversion: C (F, C, G), F (C, F, A), B-flat (F, B-flat, D), E-flat (C, E-flat, G), A-flat (F, A-flat, C), D-flat (C, D-flat, F), and F-sharp (C, F-sharp, A). The sequence ends with 'Go on...'.

3) Broken Chords through cycle of Fifths. Practice: a) Right Hand b) Left Hand c) Both Hands

C F B $\flat$  E $\flat$  A $\flat$  D $\flat$  Go on...

Detailed description: This exercise is a single staff of music in 4/4 time. It features a sequence of broken chords in 2nd inversion: C (F, C, G), F (C, F, A), B-flat (F, B-flat, D), E-flat (C, E-flat, G), A-flat (F, A-flat, C), and D-flat (C, D-flat, F). The sequence ends with 'Go on...'.

4) Arpeggiated Chords through cycle of Fifths. Practice: a) Right Hand b) Left Hand c) Both Hands

C F B $\flat$  E $\flat$  A $\flat$  D $\flat$  Go on...

Detailed description: This exercise is a single staff of music in 4/4 time. It features a sequence of arpeggiated chords in 2nd inversion: C (F, C, G), F (C, F, A), B-flat (F, B-flat, D), E-flat (C, E-flat, G), A-flat (F, A-flat, C), and D-flat (C, D-flat, F). The sequence ends with 'Go on...'.

5) Block Chords with bass line through cycle of Fifths.

C F B $\flat$  E $\flat$  A $\flat$  D $\flat$  F $\sharp$  Go on...

Detailed description: This exercise is a grand staff (treble and bass clefs) in 4/4 time. The right hand plays block chords in 2nd inversion: C (F, C, G), F (C, F, A), B-flat (F, B-flat, D), E-flat (C, E-flat, G), A-flat (F, A-flat, C), D-flat (C, D-flat, F), and F-sharp (C, F-sharp, A). The left hand plays a bass line consisting of quarter notes: C, F, B-flat, E-flat, A-flat, D-flat, F-sharp.

## MAJOR TRIADS (VOICE LEADING): 2ND. INVERSION

6) Broken Chords with bass line through cycle of Fifths.

C F B $\flat$  E $\flat$  A $\flat$  D $\flat$  Go on...

7) Arpeggiated Chords with bass line through cycle of Fifths.

C F B $\flat$  E $\flat$  A $\flat$  D $\flat$  Go on...

8) Block Chords with melody through cycle of Fifths.

C F B $\flat$  E $\flat$  A $\flat$  D $\flat$  Go on...

9) Broken Chords with melody through cycle of Fifths.

C F B $\flat$  E $\flat$  A $\flat$  D $\flat$  Go on...

10) Arpeggiated Chords with melody through cycle of Fifths.

C F B $\flat$  E $\flat$  A $\flat$  D $\flat$  Go on...