

PIANO CHORD DICTIONARY

CONTENTS

MAJOR KEYS and RELATIVE MINORS. 1

CHORDS

| | |
|---|---------|
| <i>Major, Minor, Diminished,</i> | 2 |
| <i>Augmented, Sixth Chords,</i> | Through |
| <i>Seventh Chords, Ninth Chords,</i> | Inside |
| <i>Eleventh Chords, Thirteenth Chords</i> | Back |
| | Cover |

CHORD CHART and MAJOR SCALE CHART Back
Cover

HOW CHORDS ARE FORMED

All chords are formed by combining certain scale tones according to definite rules. For example, any major chord is formed by combining the 1st, 3rd and 5th tones of the Major Scale. (See Chord Chart outside back cover under Major.) By applying this rule to the Major Scale Chart (also on outside back cover) you will see that the 1st, 3rd and 5th tones of the A Major Scale are A, C# and E, respectively. Thus the A Major chord consists of the notes A, C# and E. By using these two charts any chord contained in this book may be quickly determined. Note that even though certain chords theoretically contain up to six tones, in practice some of these tones can be left out. (See A13 on page 4.)

HOW TO USE THIS BOOK

This Handy Guide shows the notation, fingering, and keyboard diagrams for all the important chords used in modern popular music. Only the most practical position of each chord is shown. The position given is the one that is generally best for use in playing accompaniments with the left hand. There are four pages for each letter and they are designated A1, A2, A3, A4 for easy references.

Two Bass Notes are given for each chord. The Fundamental, or root bass note, is given first and is the one most frequently used with the chord. The alternate bass note, given second, is particularly useful in playing rhythmic accompaniments—the left hand first plays the fundamental bass note, followed by one or more chords; then the alternate bass note is played, followed by one or more chords.

Note that double sharps (x) and double flats (bb) are used in this book only where it is impractical to spell the chords with simpler enharmonic notation. (A double sharp raises a note two half-steps. A double flat lowers a note two half-steps.)



Alfred Publishing Co., Inc. • P.O. Box 10003,
16380 Roscoe Blvd. • Van Nuys, CA 91410-0003

Second Edition
Copyright © MCMXCII by Alfred Publishing Co., Inc.
All rights reserved. Printed in USA.

ISBN 0-88284-156-4

Front cover photo: Jordan Miller

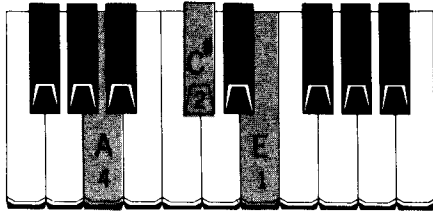
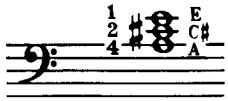
Major Keys and Relative Minors

| MAJOR KEY | RELATIVE MINOR KEY | KEY SIGNATURE |
|----------------|--------------------|------------------------------------|
| A ^b | F | 4 ^b |
| A | F [#] | 3 [#] |
| B ^b | G | 2 ^b |
| B | G [#] | 5 [#] |
| C ^b | A ^b | 7 ^b |
| C | A | NO [#] NO ^b |
| C [#] | A [#] | 7 [#] |
| D ^b | B ^b | 5 ^b |
| D | B | 2 [#] |
| E ^b | C | 3 ^b |
| E | C [#] | 4 [#] |
| F | D | 1 ^b |
| F [#] | D [#] | 6 [#] |
| G ^b | E ^b | 6 ^b |
| G | E | 1 [#] |



A

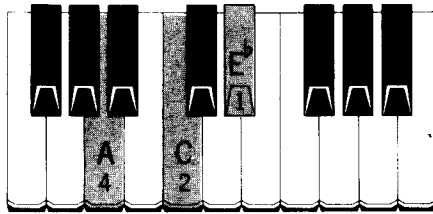
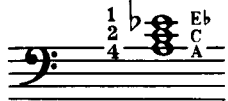
(A major)



BASS NOTES -fundamental A /alternate E

A^{dim} or A^o

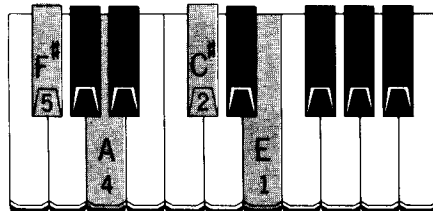
(A diminished)



BASS NOTES -fundamental A /alternate E^b

A⁶

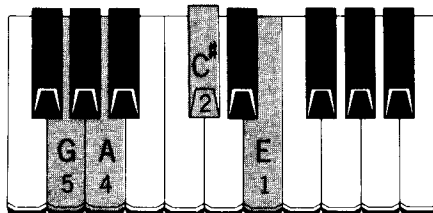
(A sixth)



BASS NOTES -fundamental A /alternate E

A⁷

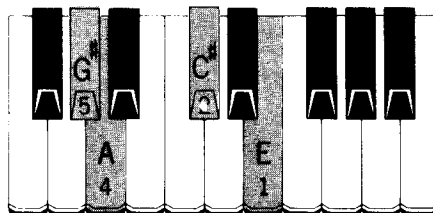
(A seventh)



BASS NOTES -fundamental A /alternate E

A^{M7}

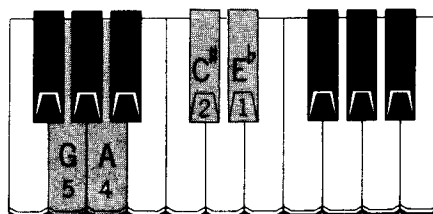
(A major seventh)



BASS NOTES -fundamental A /alternate E

A^{7b5} or A⁷⁽⁻⁵⁾

(A seventh with flatted fifth)

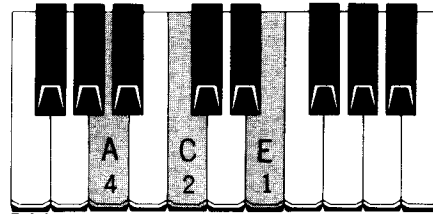
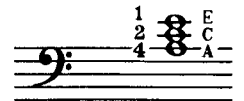


BASS NOTES -fundamental A /alternate E^b



A^m

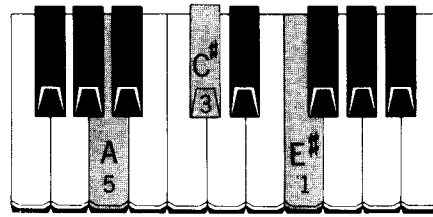
(A minor)



BASS NOTES -fundamental A /alternate E

A^{aug} or A⁺

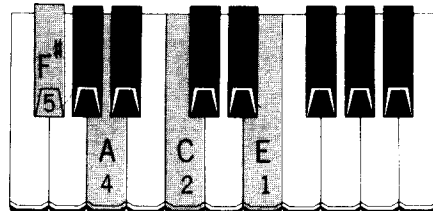
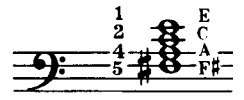
(A augmented)



BASS NOTES -fundamental A /alternate E#(F)

A^{m6}

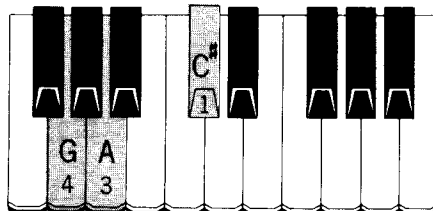
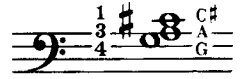
(A minor sixth)



BASS NOTES -fundamental A /alternate E

A⁷

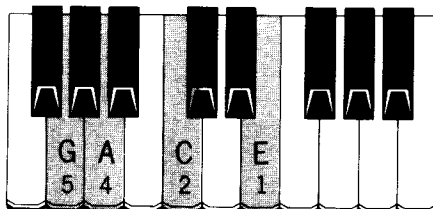
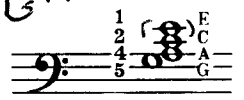
(A seventh) three note version with fifth omitted



BASS NOTES -fundamental A /alternate E

A^{m7}

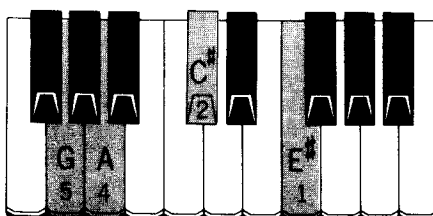
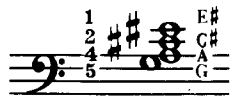
(A minor seventh)



BASS NOTES -fundamental A /alternate E

A^{7#5} or A⁷⁽⁺⁵⁾

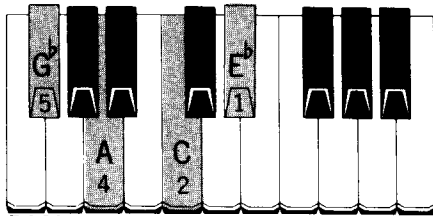
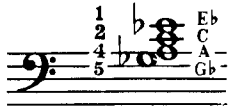
(A seventh with raised fifth)



BASS NOTES -fundamental A /alternate E#(F)

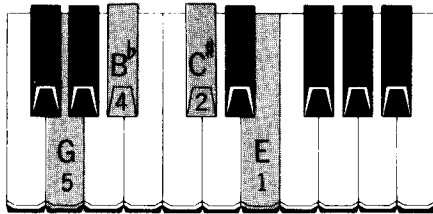


A^{dim7} or A^{o7}
(A diminished seventh)



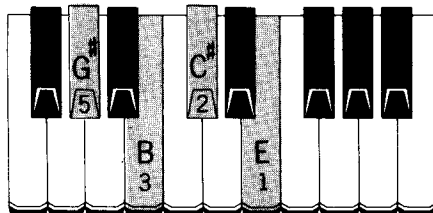
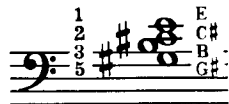
BASS
 NOTES -fundamental A /alternate E^b

A^{7b9} or A⁷⁽⁻⁹⁾
(A seventh plus flatted ninth)



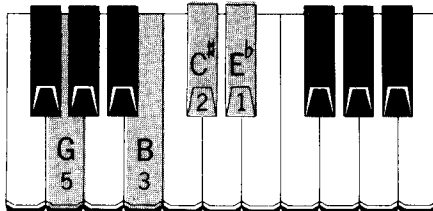
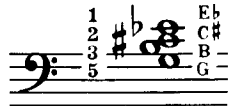
BASS
 NOTES -fundamental A /alternate E

A^{M7} add⁹
(A major seventh with added ninth)



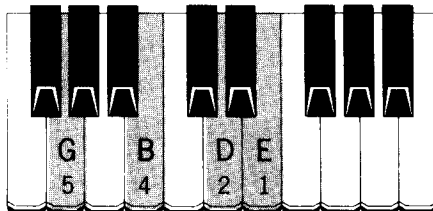
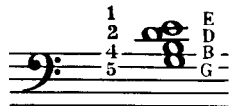
BASS
 NOTES -fundamental A /alternate E

A^{9b5} or A⁹⁽⁻⁵⁾
(A ninth with flatted fifth)



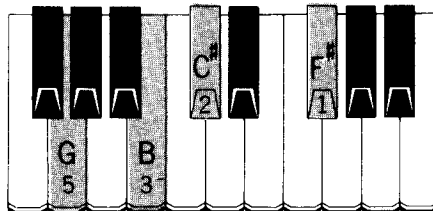
BASS
 NOTES -fundamental A /alternate E^b

A¹¹
(A eleventh)



BASS
 NOTES -fundamental A /alternate E

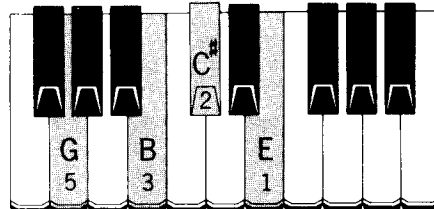
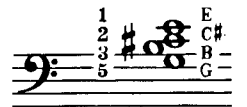
A¹³
(A thirteenth)



BASS
 NOTES -fundamental A /alternate E

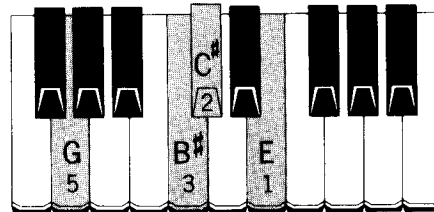
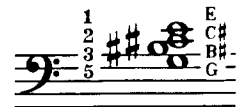


A⁹
(A ninth)



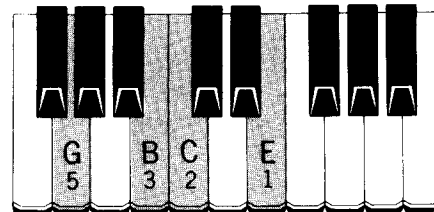
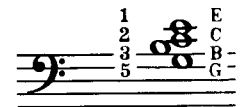
BASS
 NOTES -fundamental A /alternate E

A^{7#9} or A⁷⁽⁺⁹⁾
(A seventh plus raised ninth)



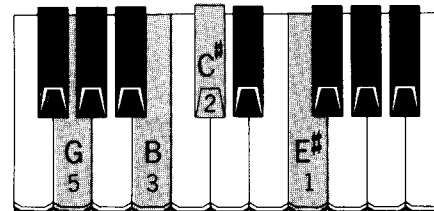
BASS
 NOTES -fundamental A /alternate E

A^{m7} add⁹
(A minor seventh with added ninth)



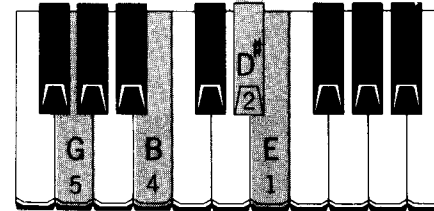
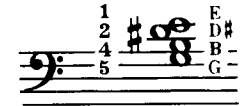
BASS
 NOTES -fundamental A /alternate E

A^{9#5} or A⁹⁽⁺⁵⁾
(A ninth with raised fifth)



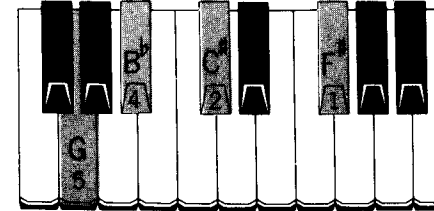
BASS
 NOTES fundamental A /alternate E[#](F)

A^{aug11}
(A augmented eleventh)



BASS
 NOTES -fundamental A /alternate E

A^{13b9} or A¹³⁽⁻⁹⁾
(A thirteenth with flatted ninth)



BASS
 NOTES -fundamental A /alternate E

A^b 1
also G[#]

A^b
(A^b major)

BASS
NOTES -fundamental A^b /alternate E^b

A^b dim or A^b 0
(A^b diminished)

BASS
NOTES -fundamental A^b /alternate D

A^b 6
(A^b sixth)

BASS
NOTES -fundamental A^b /alternate E^b

A^b 7
(A^b seventh)

BASS
NOTES -fundamental A^b /alternate E^b

A^b M⁷
(A^b major seventh)

BASS
NOTES -fundamental A^b /alternate E^b

A^b 7^b5 or A^b 7(-5)
(A^b seventh with flattened fifth)

BASS
NOTES -fundamental A^b /alternate D

A^b 2
also G[#]

BASS
NOTES -fundamental A^b /alternate E^b

A^b m
(A^b minor)

BASS
NOTES -fundamental A^b /alternate E

A^b aug or A^b +
(A^b augmented)

BASS
NOTES -fundamental A^b /alternate E^b

A^b m 6
(A^b minor sixth)

BASS
NOTES -fundamental A^b /alternate E^b

A^b 7
(A^b seventh) three note version with fifth omitted

BASS
NOTES -fundamental A^b /alternate E^b

A^b m 7
(A^b minor seventh)

BASS
NOTES -fundamental A^b /alternate E

A^b 7[#]5 or A^b 7(+5)
(A^b seventh with raised fifth)

A^b₃ also G[#]

A^b dim⁷ or A^b o⁷
(A^b diminished seventh)

BASS NOTES -fundamental A^b /alternate D

A^b 7^{b9} or A^b 7(-9)
(A^b seventh plus flatted ninth)

BASS NOTES -fundamental A^b /alternate E^b

A^b M⁷ add⁹
(A^b major seventh with added ninth)

BASS NOTES -fundamental A^b /alternate E^b

A^b 9^{b5} or A^b 9(-5)
(A^b ninth with flatted fifth)

BASS NOTES -fundamental A^b /alternate D

A^b 11
(A^b eleventh)

BASS NOTES -fundamental A^b /alternate E^b

A^b 13
(A^b thirteenth)

BASS NOTES -fundamental A^b /alternate E^b

A^b₄ also G[#]

A^b 9
(A^b ninth)

BASS NOTES -fundamental A^b /alternate E^b

A^b 7^{#9} or A^b 7(+9)
(A^b seventh plus raised ninth)

BASS NOTES -fundamental A^b /alternate E^b

A^b m⁷ add⁹
(A^b minor seventh with added ninth)

BASS NOTES -fundamental A^b /alternate E^b

A^b 9^{#5} or A^b 9(+5)
(A^b ninth with raised fifth)

BASS NOTES -fundamental A^b /alternate E

A^b aug¹¹
(A^b augmented eleventh)

BASS NOTES -fundamental A^b /alternate E^b

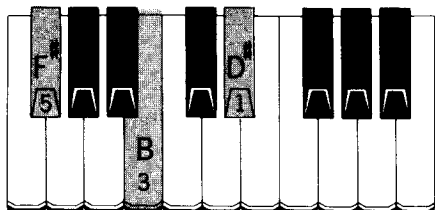
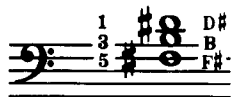
A^b 13^{b9} or A^b 13(-9)
(A^b thirteenth with flatted ninth)

BASS NOTES -fundamental A^b /alternate E^b

B¹

B

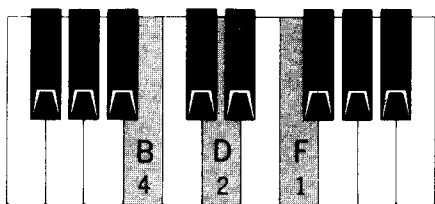
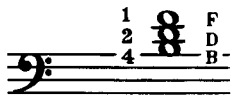
(B major)



BASS NOTES - fundamental B /alternate F#

Bdim or B⁰

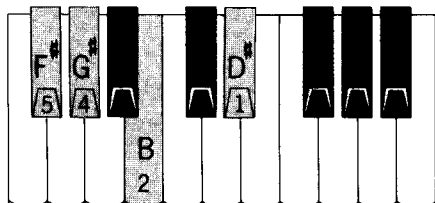
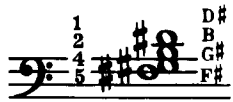
(B diminished)



BASS NOTES - fundamental B /alternate F

B⁶

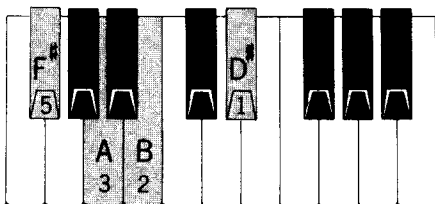
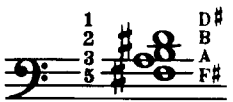
(B sixth)



BASS NOTES - fundamental B /alternate F#

B⁷

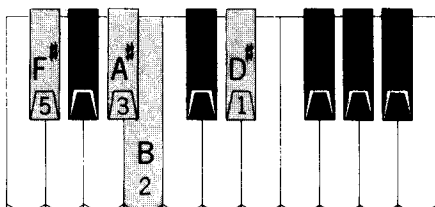
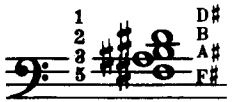
(B seventh)



BASS NOTES - fundamental B /alternate F#

B^M7

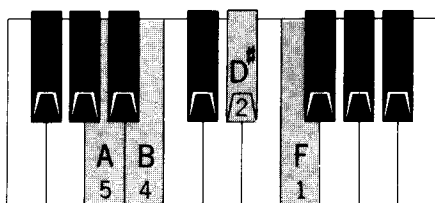
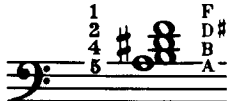
(B major seventh)



BASS NOTES - fundamental B /alternate F#

B^{7b5} or B⁷⁽⁻⁵⁾

(B seventh with flatted fifth)

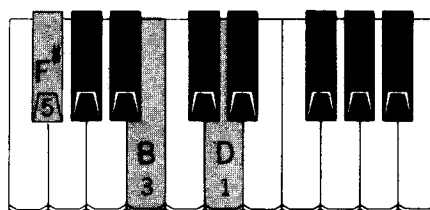


BASS NOTES - fundamental B /alternate F

B²

B_m

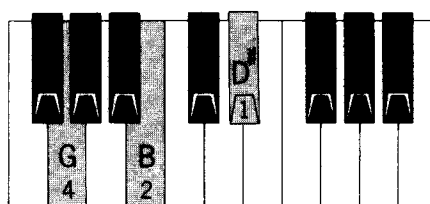
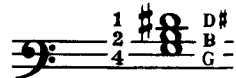
(B minor)



BASS NOTES - fundamental B /alternate F#

B^{aug} or B⁺

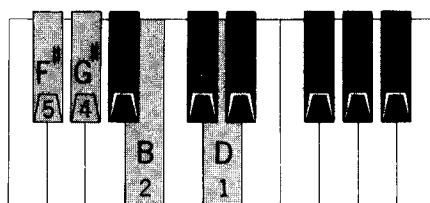
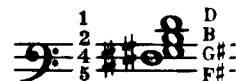
(B augmented)



BASS NOTES - fundamental B /alternate G

B_m⁶

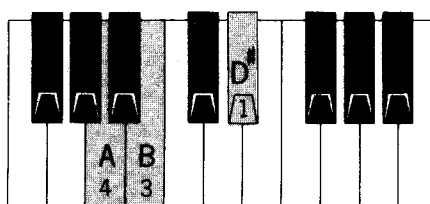
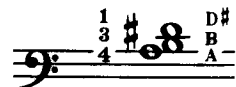
(B minor sixth)



BASS NOTES - fundamental B /alternate F#

B⁷

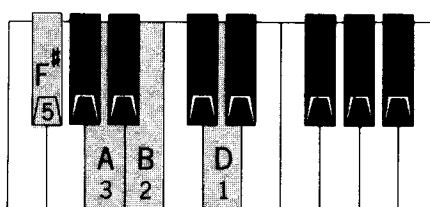
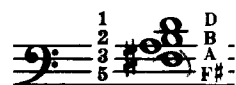
(B seventh) three note version with fifth omitted



BASS NOTES - fundamental B /alternate F#

B_m⁷

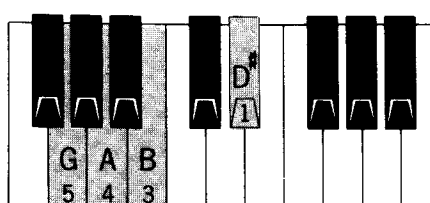
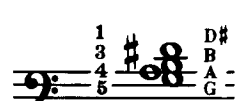
(B minor seventh)



BASS NOTES - fundamental B /alternate F#

B^{7#5} or B⁷⁽⁺⁵⁾

(B seventh with raised fifth)

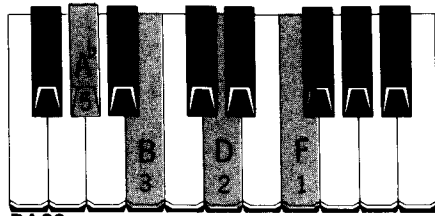
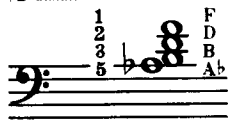


BASS NOTES - fundamental B /alternate G

B³

B^{dim} or B^{o7}

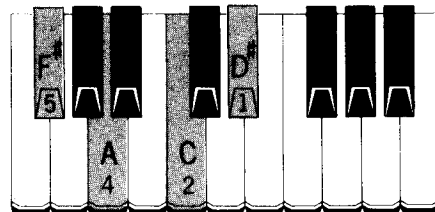
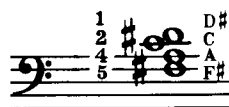
(B diminished seventh)



BASS NOTES -fundamental B /alternate F

B^{7b9} or B⁷⁽⁻⁹⁾

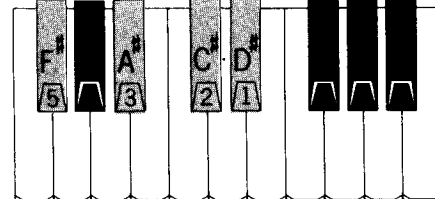
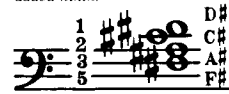
(B seventh plus flatted ninth)



BASS NOTES -fundamental B /alternate F#

B^{M7} add⁹

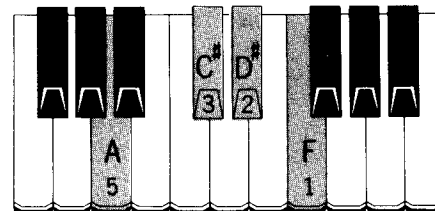
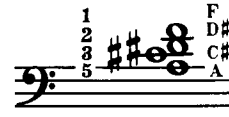
(B major seventh with added ninth)



BASS NOTES -fundamental B /alternate F#

B^{9b5} or B⁹⁽⁻⁵⁾

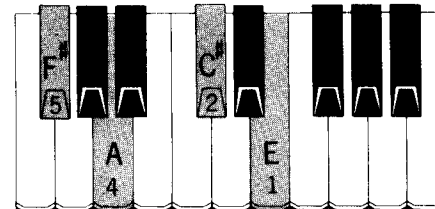
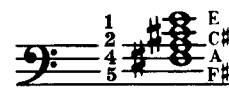
(B ninth with flatted fifth)



BASS NOTES -fundamental B /alternate F

B¹¹

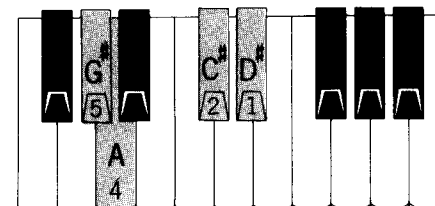
(B eleventh)



BASS NOTES -fundamental B /alternate F#

B¹³

(B thirteenth)

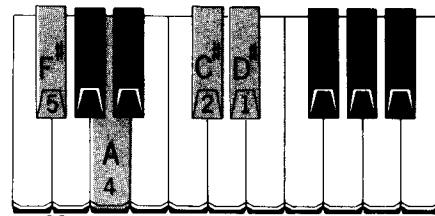
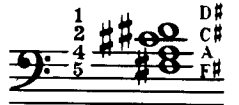


BASS NOTES -fundamental B /alternate F#

B⁴

B⁹

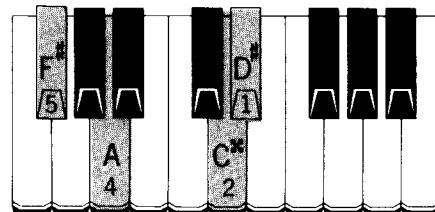
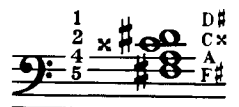
(B ninth)



BASS NOTES -fundamental B /alternate F#

B^{7#9} or B⁷⁽⁺⁹⁾

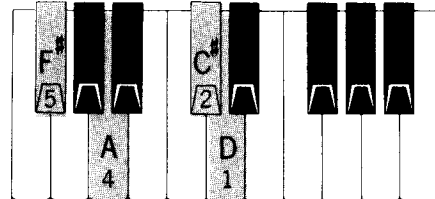
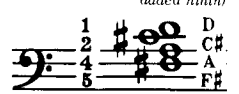
(B seventh plus raised ninth)



BASS NOTES -fundamental B /alternate F#

B^{m7} add⁹

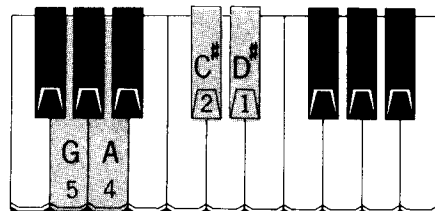
(B minor seventh with added ninth)



BASS NOTES -fundamental B /alternate F#

B^{9#5} or B⁹⁽⁺⁵⁾

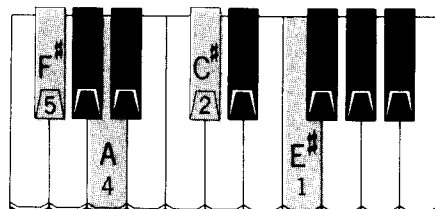
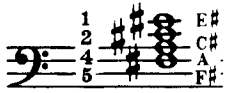
(B ninth with raised fifth)



BASS NOTES -fundamental B /alternate G

B^{aug}¹¹

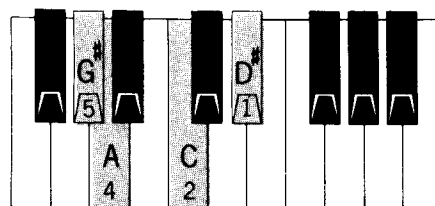
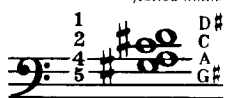
(B augmented eleventh)



BASS NOTES -fundamental B /alternate F#

B^{13b9} or B¹³⁽⁻⁹⁾

(B thirteenth with flatted ninth)



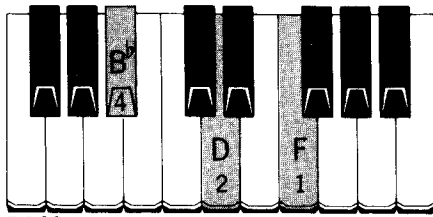
BASS NOTES -fundamental B /alternate F#

B^b₁

also A[#]

B^b

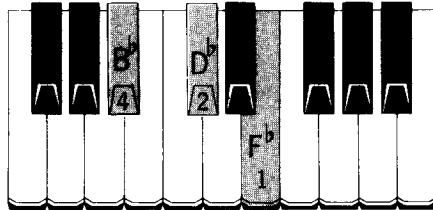
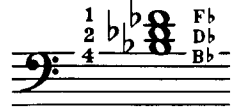
(B^b major)



BASS NOTES -fundamental B^b /alternate F

B^b dim or B^b°

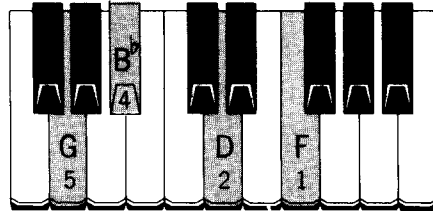
(B^b diminished)



BASS NOTES -fundamental B^b /alternate F^b(E)

B^b6

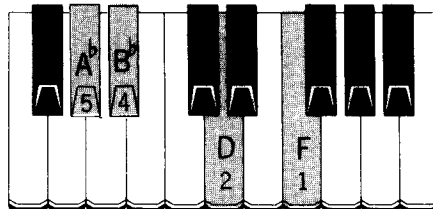
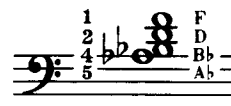
(B^b sixth)



BASS NOTES -fundamental B^b /alternate F

B^b7

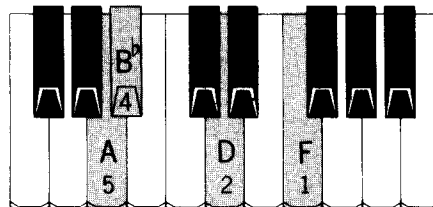
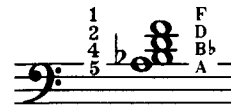
(B^b seventh)



BASS NOTES -fundamental B^b /alternate F

B^bM7

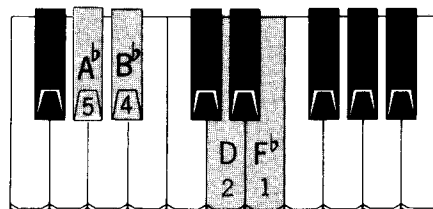
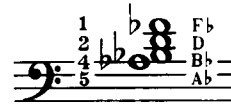
(B^b major seventh)



BASS NOTES -fundamental B^b /alternate F

B^b7^b5 or B^b7(-5)

(B^b seventh with flatted fifth)



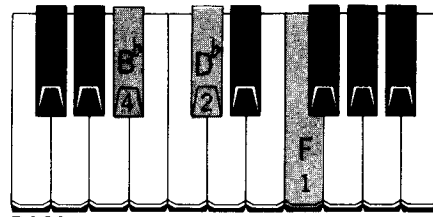
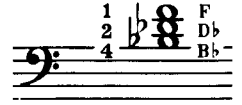
BASS NOTES -fundamental B^b /alternate F^b(E)

B^b₂

also A[#]

B^bm

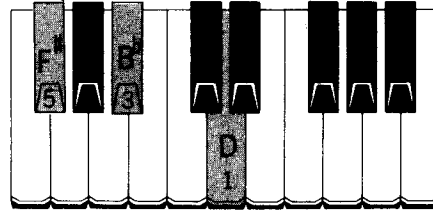
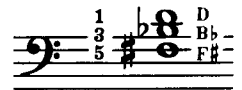
(B^b minor)



BASS NOTES -fundamental B^b /alternate F

B^b aug or B^b+

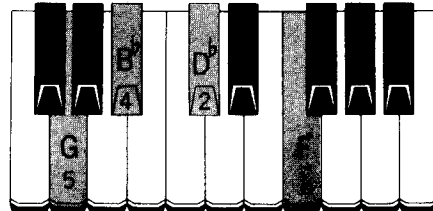
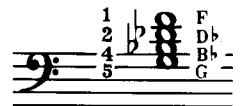
(B^b augmented)



BASS NOTES -fundamental B^b /alternate F[#]

B^b6

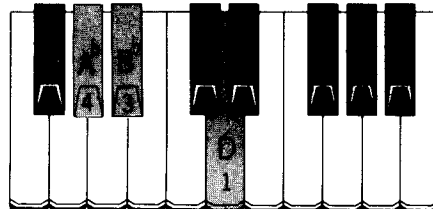
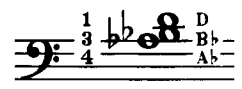
(B^b minor sixth)



BASS NOTES -fundamental B^b /alternate F

B^b7

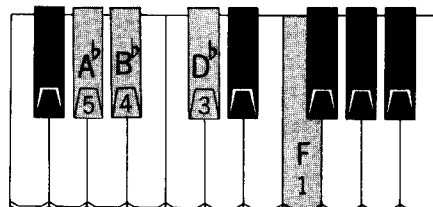
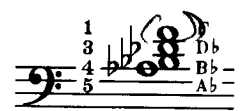
(B^b seventh) three note version with fifth omitted



BASS NOTES -fundamental B^b /alternate F

A^bB^bD^bB^b B^bm7

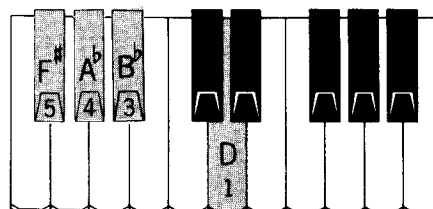
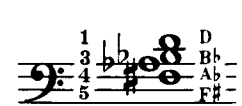
(B^b minor seventh)



BASS NOTES -fundamental B^b /alternate F

B^b7[#]5 or B^b7(+5)

(B^b seventh with raised fifth)



BASS NOTES -fundamental B^b /alternate F[#]

B^b₃

also A[#]

B^b₄

also A[#]

B^b dim or B^b0⁷

(B^b diminished seventh)

Musical notation for B^b dim or B^b0⁷ in bass clef. Fingering: 1 (F^b), 2 (D^b), 4 (B^b), 5 (G). Chord symbols: F^b, D^b, B^b, G.

Piano keyboard diagram for B^b dim or B^b0⁷. Fingerings: 5 (G), 4 (B^b), 2 (D^b), 1 (F^b).

BASS
NOTES -fundamental B^b /alternate F^b(E)

Piano keyboard diagram for B^b9. Fingerings: 5 (A^b), 3 (C), 2 (D), 1 (F).

BASS
NOTES -fundamental B^b /alternate F

B^b₉

(B^b ninth)

Musical notation for B^b9 in bass clef. Fingering: 1 (F), 2 (D), 3 (C), 5 (A^b).

B^b7^b9 or B^b7(-9)

(B^b seventh plus flatted ninth)

Musical notation for B^b7^b9 or B^b7(-9) in bass clef. Fingering: 1 (F), 2 (D), 3 (C^b), 5 (A^b).

Piano keyboard diagram for B^b7^b9 or B^b7(-9). Fingerings: 5 (A^b), 3 (C^b), 2 (D), 1 (F).

BASS
NOTES -fundamental B^b /alternate F

Piano keyboard diagram for B^b7[#]9 or B^b7(+9). Fingerings: 5 (A^b), 3 (C[#]), 2 (D), 1 (F).

BASS
NOTES -fundamental B^b /alternate F

B^b7[#]9 or B^b7(+9)

(B^b seventh plus raised ninth)

Musical notation for B^b7[#]9 or B^b7(+9) in bass clef. Fingering: 1 (F), 2 (D), 3 (C[#]), 5 (A^b).

B^bM⁷ add⁹

(B^b major seventh with added ninth)

Musical notation for B^bM⁷ add⁹ in bass clef. Fingering: 1 (F), 2 (D), 3 (C), 5 (A).

Piano keyboard diagram for B^bM⁷ add⁹. Fingerings: 5 (A), 3 (C), 2 (D), 1 (F).

BASS
NOTES -fundamental B^b /alternate F

Piano keyboard diagram for B^bm⁷ add⁹. Fingerings: 5 (A^b), 3 (C), 2 (D^b), 1 (F).

BASS
NOTES -fundamental B^b /alternate F

B^bm⁷ add⁹

(B^b minor seventh with added ninth)

Musical notation for B^bm⁷ add⁹ in bass clef. Fingering: 1 (F), 2 (D^b), 3 (C), 5 (A^b).

B^b9^b5 or B^b9(-5)

(B^b ninth with flatted fifth)

Musical notation for B^b9^b5 or B^b9(-5) in bass clef. Fingering: 1 (F^b), 2 (D), 3 (C), 5 (A^b).

Piano keyboard diagram for B^b9^b5 or B^b9(-5). Fingerings: 5 (A^b), 3 (C), 2 (D), 1 (F^b).

BASS
NOTES -fundamental B^b /alternate F^b(E)

Piano keyboard diagram for B^b9[#]5 or B^b9(+5). Fingerings: 5 (F[#]), 4 (A^b), 2 (C), 1 (D).

BASS
NOTES -fundamental B^b /alternate F[#]

B^b9[#]5 or B^b9(+5)

(B^b ninth with raised fifth)

Musical notation for B^b9[#]5 or B^b9(+5) in bass clef. Fingering: 1 (D), 2 (C), 4 (A^b), 5 (F[#]).

B^b11

(B^b eleventh)

Musical notation for B^b11 in bass clef. Fingering: 1 (E^b), 2 (C), 4 (A^b), 5 (F).

Piano keyboard diagram for B^b11. Fingerings: 5 (F), 4 (A^b), 2 (C), 1 (E^b).

BASS
NOTES -fundamental B^b /alternate F

Piano keyboard diagram for B^b aug¹¹. Fingerings: 5 (F), 4 (A^b), 2 (C), 1 (E).

BASS
NOTES -fundamental B^b /alternate F

B^b aug¹¹

(B^b augmented eleventh)

Musical notation for B^b aug¹¹ in bass clef. Fingering: 1 (E), 2 (C), 4 (A^b), 5 (F).

B^b13

(B^b thirteenth)

Musical notation for B^b13 in bass clef. Fingering: 1 (D), 2 (C), 4 (A^b), 5 (G).

Piano keyboard diagram for B^b13. Fingerings: 5 (G), 4 (A^b), 2 (C), 1 (D).

BASS
NOTES -fundamental B^b /alternate F

Piano keyboard diagram for B^b13^b9 or B^b13(-9). Fingerings: 5 (G), 4 (A^b), 2 (C^b), 1 (D).

BASS
NOTES -fundamental B^b /alternate F

B^b13^b9 or B^b13(-9)

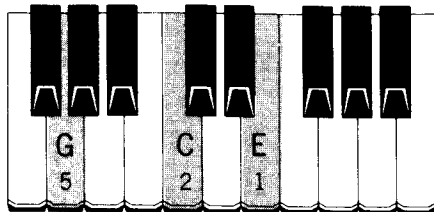
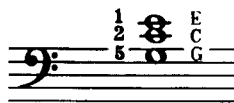
(B^b thirteenth with flatted ninth)

Musical notation for B^b13^b9 or B^b13(-9) in bass clef. Fingering: 1 (D), 2 (C^b), 4 (A^b), 5 (G).

C₁

C

(C major)

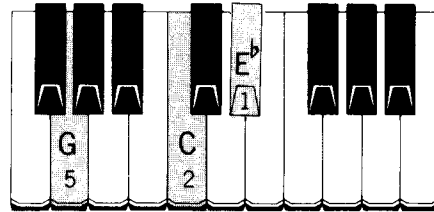
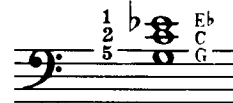


BASS NOTES -fundamental C /alternate G

C₂

C_m

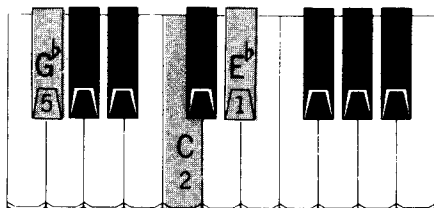
(C minor)



BASS NOTES -fundamental C /alternate G

C dim or C^o

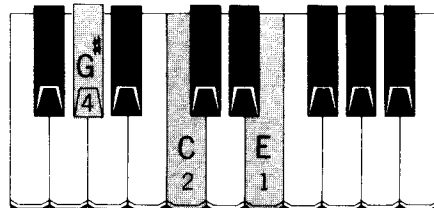
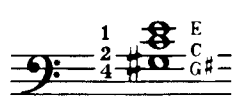
(C diminished)



BASS NOTES -fundamental C /alternate G^b

C aug or C⁺

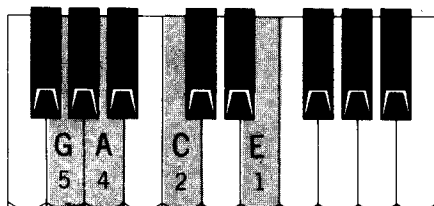
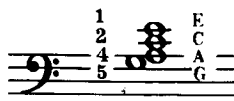
(C augmented)



BASS NOTES -fundamental C /alternate G[#]

C⁶

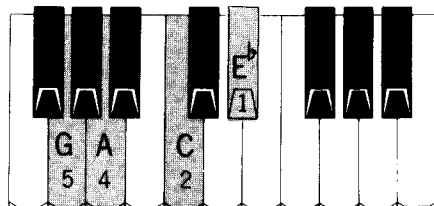
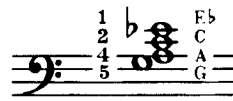
(C sixth)



BASS NOTES -fundamental C /alternate G

C_m⁶

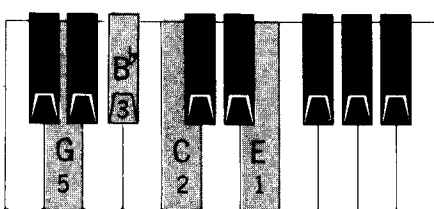
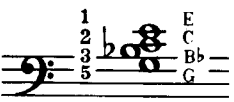
(C minor sixth)



BASS NOTES -fundamental C /alternate G

C⁷

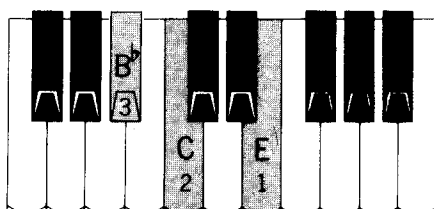
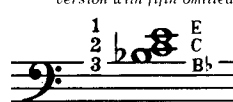
(C seventh)



BASS NOTES -fundamental C /alternate G

C⁷

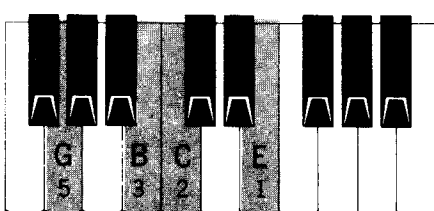
(C seventh) three note version with fifth omitted



BASS NOTES -fundamental C /alternate G

C_M⁷

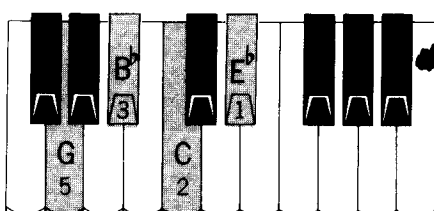
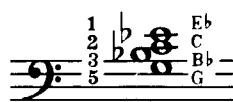
(C major seventh)



BASS NOTES -fundamental C /alternate G

C_m⁷

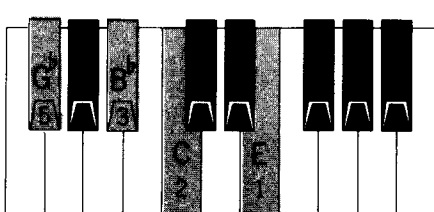
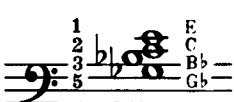
(C minor seventh)



BASS NOTES -fundamental C /alternate G

C^{7b5} or C⁷⁽⁻⁵⁾

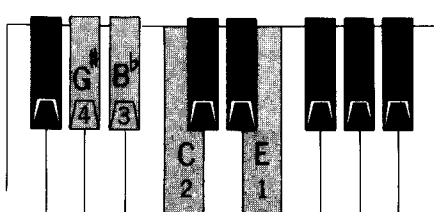
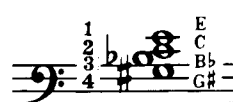
(C seventh with flattened fifth)



BASS NOTES -fundamental C /alternate G^b

C^{7#5} or C⁷⁽⁺⁵⁾

(C seventh with raised fifth)

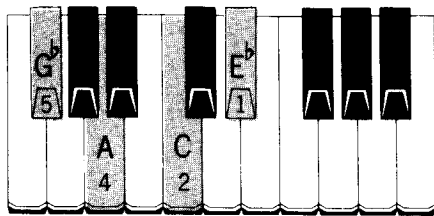
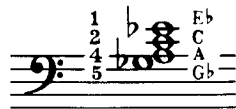


BASS NOTES -fundamental C /alternate G[#]

C³

C^{dim7} or C^{o7}

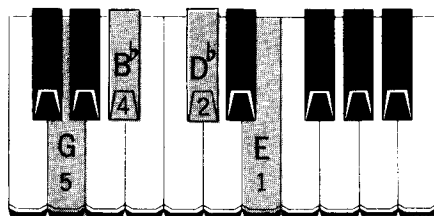
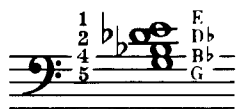
(C diminished seventh)



BASS NOTES - fundamental C /alternate G^b

C^{7b9} or C⁷⁽⁻⁹⁾

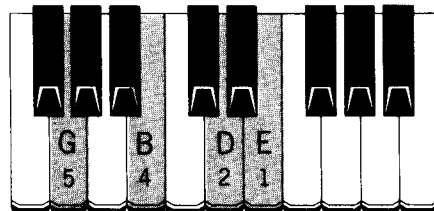
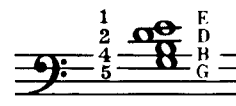
(C seventh plus flatted ninth)



BASS NOTES - fundamental C /alternate G

C^{M7} add⁹

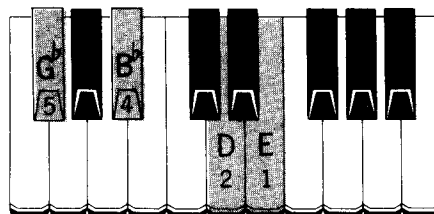
(C major seventh with added ninth)



BASS NOTES - fundamental C /alternate G

C^{9b5} or C⁹⁽⁻⁵⁾

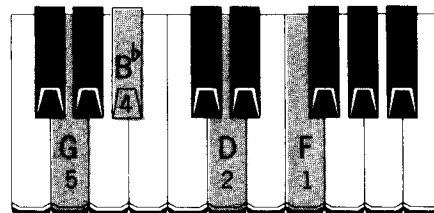
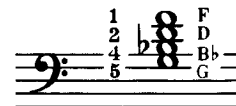
(C ninth with flatted fifth)



BASS NOTES - fundamental C /alternate G^b

C¹¹

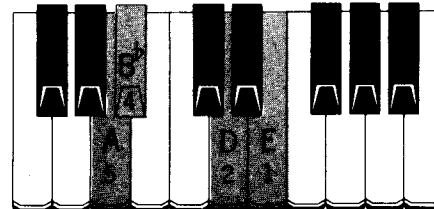
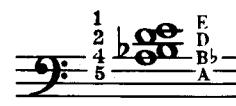
(C eleventh)



BASS NOTES - fundamental C /alternate G

C¹³

(C thirteenth)

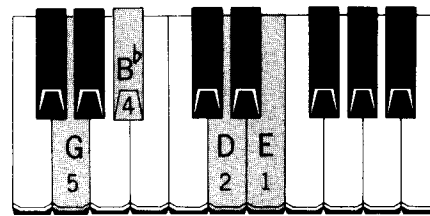
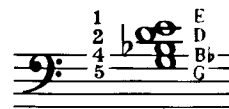


BASS NOTES - fundamental C /alternate G

C⁴

C⁹

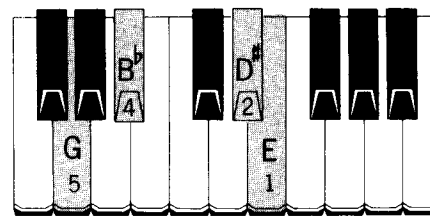
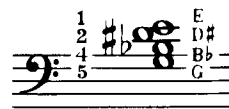
(C ninth)



BASS NOTES - fundamental C /alternate G

C^{7#9} or C⁷⁽⁺⁹⁾

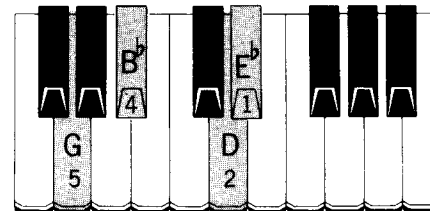
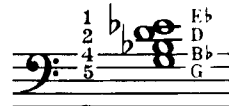
(C seventh plus raised ninth)



BASS NOTES - fundamental C /alternate G

C^{m7} add⁹

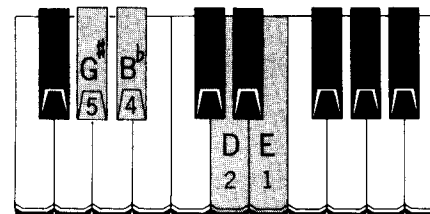
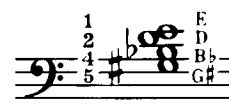
(C minor seventh with added ninth)



BASS NOTES - fundamental C /alternate G

C^{9#5} or C⁹⁽⁺⁵⁾

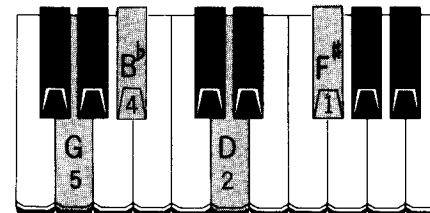
(C ninth with raised fifth)



BASS NOTES - fundamental C /alternate G[#]

C^{aug11}

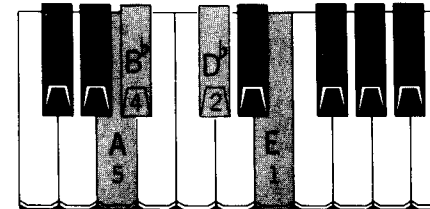
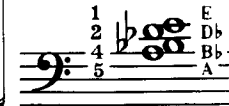
(C augmented eleventh)



BASS NOTES - fundamental C /alternate G

C^{13b9} or C¹³⁽⁻⁹⁾

(C thirteenth with flatted ninth)



BASS NOTES - fundamental C /alternate G

C[#] 1

also D^b

C[#] 2

also D^b

C[#]
(C[#] major)

BASS
NOTES - fundamental C[#] /alternate G[#]

C[#] m
(C[#] minor)

BASS
NOTES - fundamental C[#] /alternate G[#]

C[#] dim or C[#] 0
(C[#] diminished)

BASS
NOTES - fundamental C[#] /alternate G

C[#] aug or C[#] +
(C[#] augmented)

BASS
NOTES - fundamental C[#] /alternate A

C[#] 6
(C[#] sixth)

BASS
NOTES - fundamental C[#] /alternate G[#]

C[#] m 6
(C[#] minor sixth)

BASS
NOTES - fundamental C[#] /alternate G[#]

C[#] 7
(C[#] seventh)

BASS
NOTES - fundamental C[#] /alternate G[#]

C[#] 7
(C[#] seventh) three note version with fifth omitted

BASS
NOTES - fundamental C[#] /alternate G[#]

C[#] M 7
(C[#] major seventh)

BASS
NOTES - fundamental C[#] /alternate G[#]

C[#] m 7
(C[#] minor seventh)

B C# E

BASS
NOTES - fundamental C[#] /alternate G[#]

C[#] 7^b5 or C[#] 7(-5)
(C[#] seventh with flatted fifth)

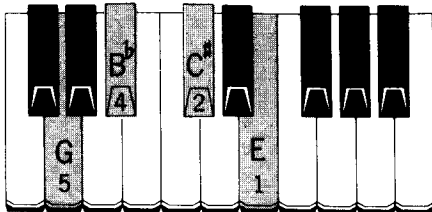
BASS
NOTES - fundamental C[#] /alternate G

C[#] 7[#]5 or C[#] 7(+5)
(C[#] seventh with raised fifth)

BASS
NOTES - fundamental C[#] /alternate A

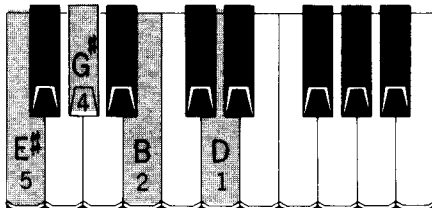
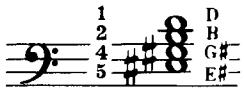
C# ³
also Db

C# dim 7 or **C#o7**
(C# diminished seventh)



BASS
NOTES - fundamental C# /alternate G

C#7b9 or **C#7(-9)**
(C# seventh plus flatted ninth)



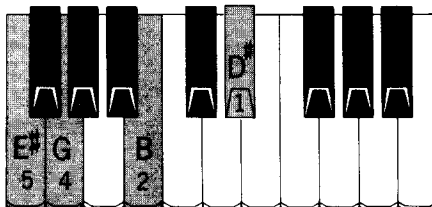
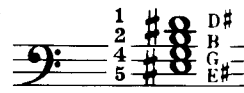
BASS
NOTES - fundamental C# /alternate G#

C# M 7 add 9
(C# major seventh with added ninth)



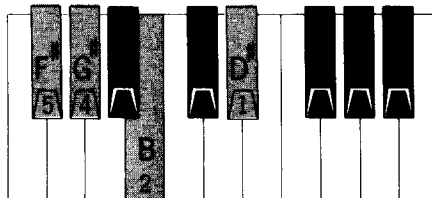
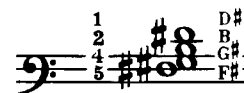
BASS
NOTES - fundamental C# /alternate G#

C#9b5 or **C#9(-5)**
(C# ninth with flatted fifth)



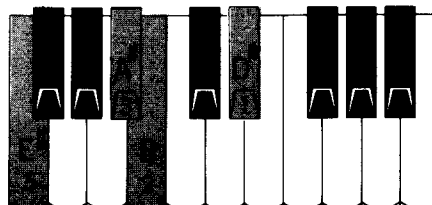
BASS
NOTES - fundamental C# /alternate G

C# 11
(C# eleventh)



BASS
NOTES - fundamental C# /alternate G#

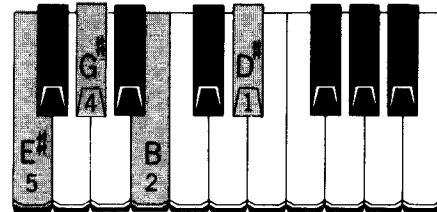
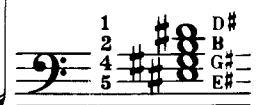
C# 13
(C# thirteenth)



BASS
NOTES - fundamental C# /alternate G#

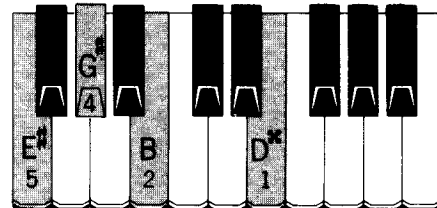
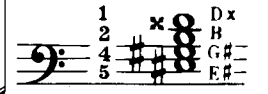
C# ⁴
also Db

C#9
(C# ninth)



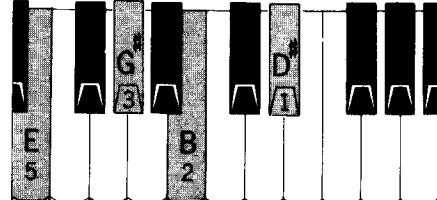
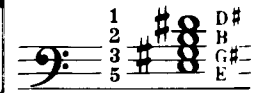
BASS
NOTES - fundamental C# /alternate G#

C#7#9 or **C#7(+9)**
(C# seventh plus raised ninth)



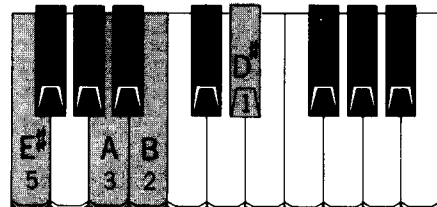
BASS
NOTES - fundamental C# /alternate G#

C# m 7 add 9
(C# minor seventh with added ninth)



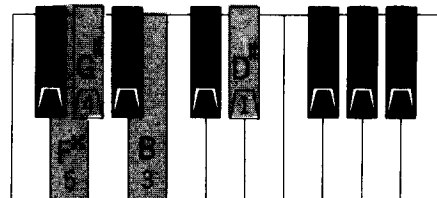
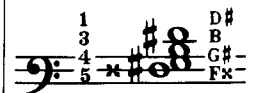
BASS
NOTES - fundamental C# /alternate G#

C#9#5 or **C#9(+5)**
(C# ninth with raised fifth)



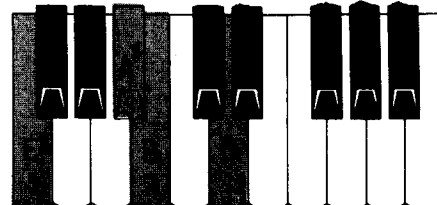
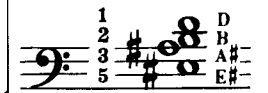
BASS
NOTES - fundamental C# /alternate A

C# aug 11
(C# augmented eleventh)



BASS
NOTES - fundamental C# /alternate G#

C#13b9 or **C#13(-9)**
(C# thirteenth with flatted ninth)



BASS
NOTES - fundamental C# /alternate G#

D¹

D²

D
(D major)

BASS
NOTES - fundamental D /alternate A

D^m
(D minor)

BASS
NOTES - fundamental D /alternate A

D dim or D⁰
(D diminished)

BASS
NOTES - fundamental D /alternate A^b

D aug or D⁺
(D augmented)

BASS
NOTES - fundamental D /alternate A[#]

D⁶
(D sixth)

BASS
NOTES - fundamental D /alternate A

D^{m 6}
(D minor sixth)

BASS
NOTES - fundamental D /alternate A

D⁷
(D seventh)

BASS
NOTES - fundamental D /alternate A

D⁷
(D seventh) three note version with fifth omitted

BASS
NOTES - fundamental D /alternate A

D^{M 7}
(D major seventh)

BASS
NOTES - fundamental D /alternate A

D^{m 7}
(D minor seventh)

BASS
NOTES - fundamental D /alternate A

D^{7b5} or D⁷⁽⁻⁵⁾
(D seventh with flatted fifth)

BASS
NOTES - fundamental D /alternate A^b

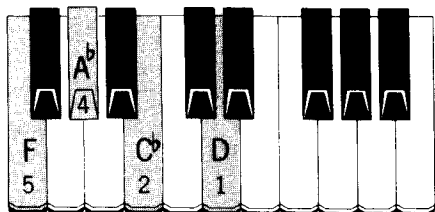
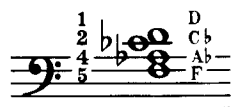
D^{7#5} or D⁷⁽⁺⁵⁾
(D seventh with raised fifth)

BASS
NOTES - fundamental D /alternate A[#]

D³

D dim⁷ or D^{o7}

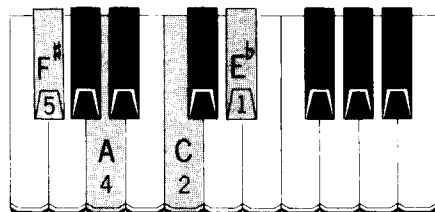
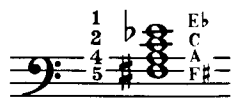
(D diminished seventh)



BASS NOTES -fundamental D /alternate A^b

D^{7b9} or D⁷⁽⁻⁹⁾

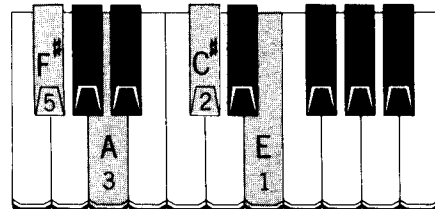
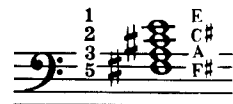
(D seventh plus flatted ninth)



BASS NOTES -fundamental D /alternate A

D^{M7} add⁹

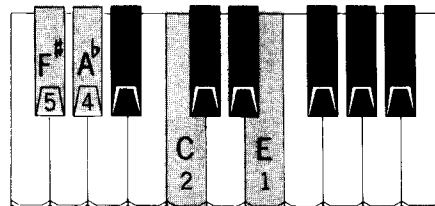
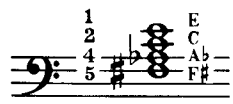
(D major seventh with added ninth)



BASS NOTES -fundamental D /alternate A

D^{9b5} or D⁹⁽⁻⁵⁾

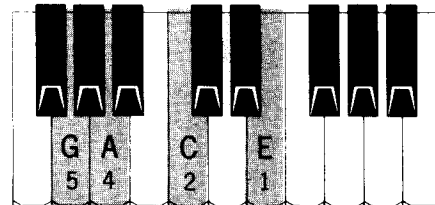
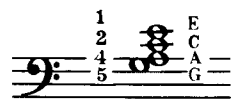
(D ninth with flatted fifth)



BASS NOTES -fundamental D /alternate A^b

D¹¹

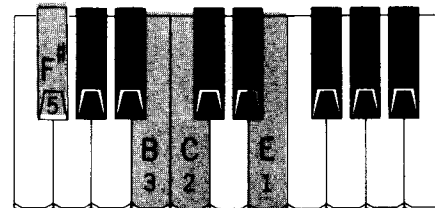
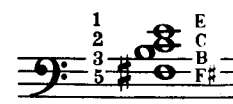
(D eleventh)



BASS NOTES -fundamental D /alternate A

D¹³

(D thirteenth)

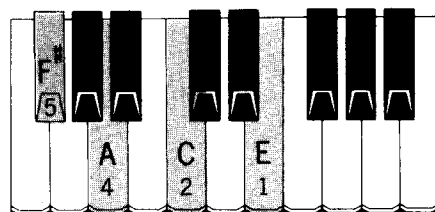
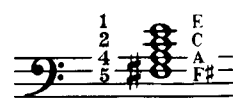


BASS NOTES -fundamental D /alternate A

D⁴

D⁹

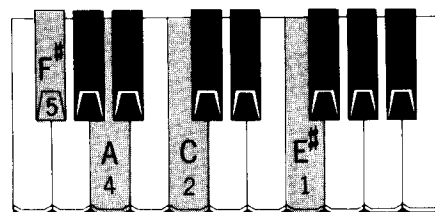
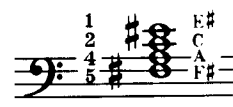
(D ninth)



BASS NOTES -fundamental D /alternate A

D^{7#9} or D⁷⁽⁺⁹⁾

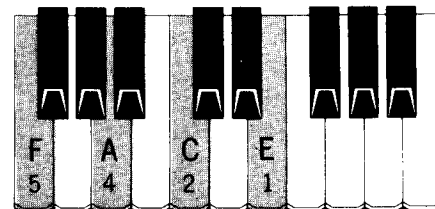
(D seventh plus raised ninth)



BASS NOTES -fundamental D /alternate A

D^{m7} add⁹

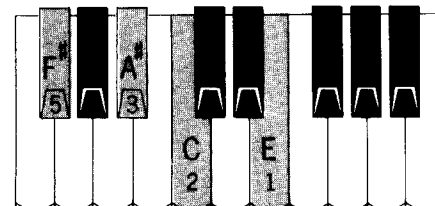
(D minor seventh with added ninth)



BASS NOTES -fundamental D /alternate A

D^{9#5} or D⁹⁽⁺⁵⁾

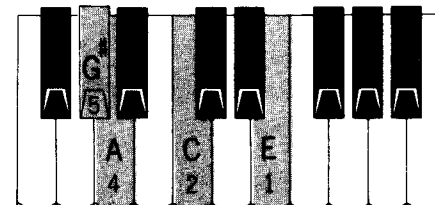
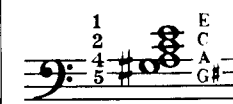
(D ninth with raised fifth)



BASS NOTES -fundamental D /alternate A[#]

D^{aug 11}

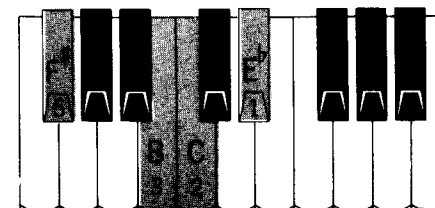
(D augmented eleventh)



BASS NOTES -fundamental D /alternate A

D^{13b9} or D¹³⁽⁻⁹⁾

(D thirteenth with flatted ninth)



BASS NOTES -fundamental D /alternate A

E 1

E
(E major)

BASS
NOTES - fundamental E /alternate B

E 2

E_m
(E minor)

BASS
NOTES - fundamental E /alternate B

E^{dim} or E⁰
(E diminished)

BASS
NOTES - fundamental E /alternate B^b

E^{aug} or E⁺
(E augmented)

BASS
NOTES - fundamental E /alternate G[#]

E⁶
(E sixth)

BASS
NOTES - fundamental E /alternate B

E_m⁶
(E minor sixth)

BASS
NOTES - fundamental E /alternate B

E⁷
(E seventh)

BASS
NOTES - fundamental E /alternate B

E⁷
(E seventh) three note version with fifth omitted

BASS
NOTES - fundamental E /alternate B

E_M⁷
(E major seventh)

BASS
NOTES - fundamental E /alternate B

E_m⁷
(E minor seventh)

BASS
NOTES - fundamental E /alternate B

E^{7b5} or E⁷⁽⁻⁵⁾
(E seventh with flattened fifth)

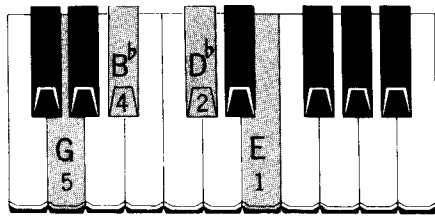
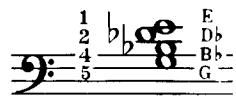
BASS
NOTES - fundamental E /alternate B^b

E^{7#5} or E⁷⁽⁺⁵⁾
(E seventh with raised fifth)

BASS
NOTES - fundamental E /alternate B[#](C)

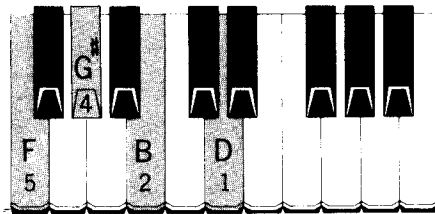
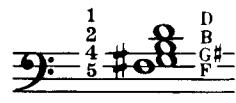
E 3

E^{dim7} or E^{o7}
(E diminished seventh)



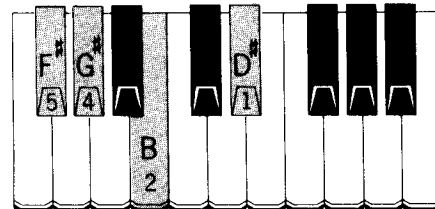
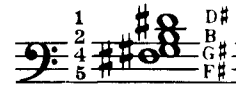
BASS NOTES -fundamental E /alternate B^b

E^{7b9} or E⁷⁽⁻⁹⁾
(E seventh plus flatted ninth)



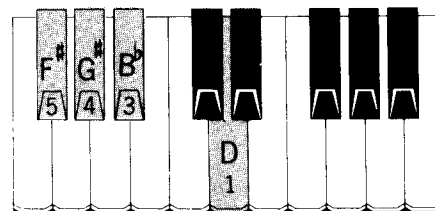
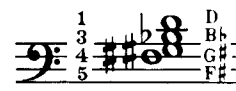
BASS NOTES -fundamental E /alternate B

E^{M7} add⁹
(E major seventh with added ninth)



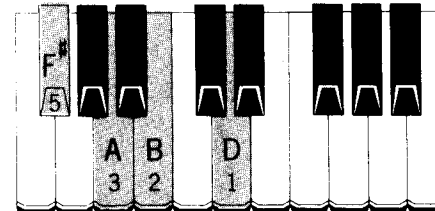
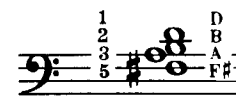
BASS NOTES -fundamental E /alternate B

E^{9b5} or E⁹⁽⁻⁵⁾
(E ninth with flatted fifth)



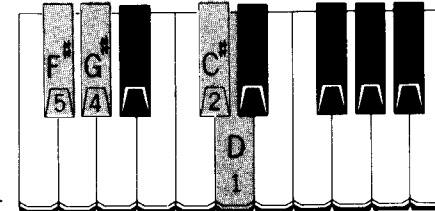
BASS NOTES -fundamental E /alternate B^b

E¹¹
(E eleventh)



BASS NOTES -fundamental E /alternate B

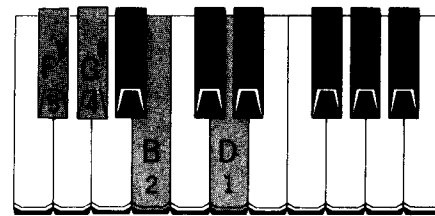
E¹³
(E thirteenth)



BASS NOTES -fundamental E /alternate B

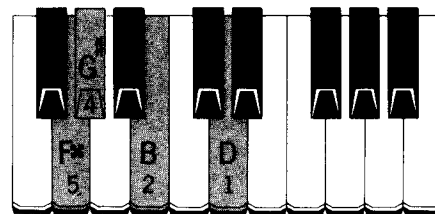
E 4

E⁹
(E ninth)



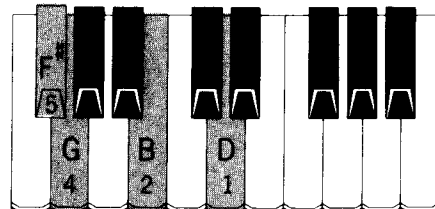
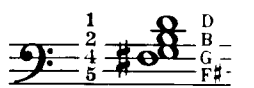
BASS NOTES -fundamental E /alternate B

E^{7#9} or E⁷⁽⁺⁹⁾
(E seventh plus raised ninth)



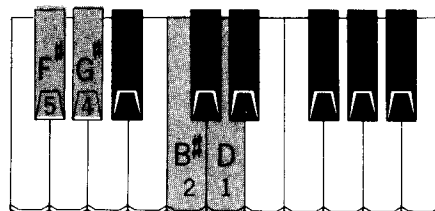
BASS NOTES -fundamental E /alternate B

E^{m7} add⁹
(E minor seventh with added ninth)



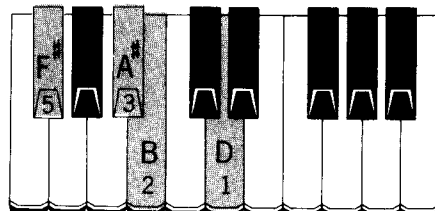
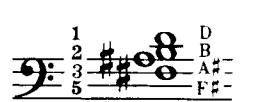
BASS NOTES -fundamental E /alternate B

E^{9#5} or E⁹⁽⁺⁵⁾
(E ninth with raised fifth)



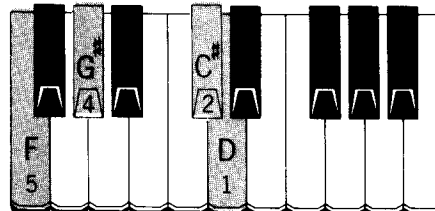
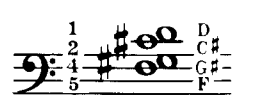
BASS NOTES -fundamental E /alternate B[#](C)

E^{aug11}
(E augmented eleventh)



BASS NOTES -fundamental E /alternate B

E^{13b9} or E¹³⁽⁻⁹⁾
(E thirteenth with flatted ninth)



BASS NOTES -fundamental E /alternate B

E^b 1

also D[#]

E^b 2

also D[#]

E^b
(E^b major)

BASS
NOTES -fundamental E^b /alternate B^b

BASS
NOTES -fundamental E^b /alternate B^b

E^b m
(E^b minor)

E^b dim or E^b o
(E^b diminished)

BASS
NOTES -fundamental E^b /alternate A

BASS
NOTES -fundamental E^b /alternate B

E^b aug or E^b +
(E^b augmented)

E^b 6
(E^b sixth)

BASS
NOTES -fundamental E^b /alternate B^b

BASS
NOTES -fundamental E^b /alternate B^b

E^b m 6
(E^b minor sixth)

E^b 7 D^b E^b G
(E^b seventh)

BASS
NOTES -fundamental E^b /alternate B^b

BASS
NOTES -fundamental E^b /alternate B^b

E^b 7
(E^b seventh) three note version with fifth omitted

E^b M 7
(E^b major seventh)

BASS
NOTES -fundamental E^b /alternate B^b

BASS
NOTES -fundamental E^b /alternate B^b

E^b m 7
(E^b minor seventh)

E^b 7^b 5 or E^b 7(-5)
(E^b seventh with flatted fifth)

BASS
NOTES -fundamental E^b /alternate A

BASS
NOTES -fundamental E^b /alternate B

E^b 7[#] 5 or E^b 7(+5)
(E^b seventh with raised fifth)

E^b ³ also D[#]

E^b ⁴ also D[#]

E^b dim⁷ or E^b o⁷

(E^b diminished seventh)

Musical notation for E^b dim⁷ or E^b o⁷ in bass clef. The notes are G^b, A^b, C^b, and E^b. Fingerings are indicated as 1, 2, 4, 5.

Piano keyboard diagram for E^b dim⁷ or E^b o⁷. The notes G^b, A^b, C^b, and E^b are highlighted. Fingerings are 5, 4, 2, 1.

BASS NOTES -fundamental E^b /alternate A

Piano keyboard diagram for E^b 9. The notes G, A^b, D^b, and F are highlighted. Fingerings are 5, 4, 2, 1.

BASS NOTES -fundamental E^b /alternate B^b

E^b ⁹

(E^b ninth)

Musical notation for E^b 9 in bass clef. The notes G, A^b, D^b, and F are shown. Fingerings are 5, 4, 2, 1.

E^b 7^b9 or E^b 7(-9)

(E^b seventh plus flatted ninth)

Musical notation for E^b 7^b9 or E^b 7(-9) in bass clef. The notes G, A^b, B^b, C^b, D^b, and F^b are shown. Fingerings are 5, 4, 2, 1.

Piano keyboard diagram for E^b 7^b9 or E^b 7(-9). The notes G, A^b, B^b, C^b, D^b, and F^b are highlighted. Fingerings are 5, 4, 2, 1.

BASS NOTES -fundamental E^b /alternate B^b

Piano keyboard diagram for E^b 7[#]9 or E^b 7(+9). The notes G, A^b, B^b, C^b, D^b, and F[#] are highlighted. Fingerings are 5, 4, 2, 1.

BASS NOTES -fundamental E^b /alternate B^b

E^b 7[#]9 or E^b 7(+9)

(E^b seventh plus raised ninth)

Musical notation for E^b 7[#]9 or E^b 7(+9) in bass clef. The notes G, A^b, B^b, C^b, D^b, and F[#] are shown. Fingerings are 5, 4, 2, 1.

E^b M⁷ add⁹

(E^b major seventh with added ninth)

Musical notation for E^b M⁷ add⁹ in bass clef. The notes G, A^b, B^b, C^b, D^b, F, and G are shown. Fingerings are 5, 4, 2, 1.

Piano keyboard diagram for E^b M⁷ add⁹. The notes G, A^b, B^b, C^b, D^b, F, and G are highlighted. Fingerings are 5, 4, 2, 1.

BASS NOTES -fundamental E^b /alternate B^b

Piano keyboard diagram for E^b m⁷ add⁹. The notes G, A^b, B^b, C^b, D^b, F, and G are highlighted. Fingerings are 5, 4, 2, 1.

BASS NOTES -fundamental E^b /alternate B^b

E^b m⁷ add⁹

(E^b minor seventh with added ninth)

Musical notation for E^b m⁷ add⁹ in bass clef. The notes G, A^b, B^b, C^b, D^b, F, and G are shown. Fingerings are 5, 4, 2, 1.

E^b 9^b5 or E^b 9(-5)

(E^b ninth with flatted fifth)

Musical notation for E^b 9^b5 or E^b 9(-5) in bass clef. The notes G, A^b, B^b, C^b, D^b, and F are shown. Fingerings are 5, 4, 2, 1.

Piano keyboard diagram for E^b 9^b5 or E^b 9(-5). The notes G, A^b, B^b, C^b, D^b, and F are highlighted. Fingerings are 5, 4, 2, 1.

BASS NOTES -fundamental E^b /alternate A

Piano keyboard diagram for E^b 9[#]5 or E^b 9(+5). The notes G, A^b, B^b, C^b, D^b, and F are highlighted. Fingerings are 5, 4, 2, 1.

BASS NOTES -fundamental E^b /alternate B

E^b 9[#]5 or E^b 9(+5)

(E^b ninth with raised fifth)

Musical notation for E^b 9[#]5 or E^b 9(+5) in bass clef. The notes G, A^b, B^b, C^b, D^b, and F are shown. Fingerings are 5, 4, 2, 1.

E^b 11

(E^b eleventh)

Musical notation for E^b 11 in bass clef. The notes G, A^b, B^b, C^b, D^b, E^b, and F are shown. Fingerings are 5, 4, 2, 1.

Piano keyboard diagram for E^b 11. The notes G, A^b, B^b, C^b, D^b, E^b, and F are highlighted. Fingerings are 5, 4, 2, 1.

BASS NOTES -fundamental E^b /alternate B^b

Piano keyboard diagram for E^b aug 11. The notes G, A^b, B^b, C^b, D^b, E^b, and F are highlighted. Fingerings are 5, 4, 2, 1.

BASS NOTES -fundamental E^b /alternate B^b

E^b aug¹¹

(E^b augmented eleventh)

Musical notation for E^b aug¹¹ in bass clef. The notes G, A^b, B^b, C^b, D^b, E^b, and F are shown. Fingerings are 5, 4, 2, 1.

E^b 13

(E^b thirteenth)

Musical notation for E^b 13 in bass clef. The notes G, A^b, B^b, C^b, D^b, E^b, F, and G are shown. Fingerings are 5, 3, 1, 2.

Piano keyboard diagram for E^b 13. The notes G, A^b, B^b, C^b, D^b, E^b, F, and G are highlighted. Fingerings are 5, 3, 1, 2.

BASS NOTES -fundamental E^b /alternate B^b

Piano keyboard diagram for E^b 13^b9 or E^b 13(-9). The notes G, A^b, B^b, C^b, D^b, E^b, F^b, and G are highlighted. Fingerings are 5, 3, 1, 2.

BASS NOTES -fundamental E^b /alternate B^b

E^b 13^b9 or E^b 13(-9)

(E^b thirteenth with flatted ninth)

Musical notation for E^b 13^b9 or E^b 13(-9) in bass clef. The notes G, A^b, B^b, C^b, D^b, E^b, F^b, and G are shown. Fingerings are 5, 3, 1, 2.

F₁

F
(F major)

BASS
NOTES -fundamental F /alternate C

F dim or F^o
(F diminished)

BASS
NOTES -fundamental F /alternate C^b(B)

F⁶
(F sixth)

BASS
NOTES -fundamental F /alternate C

F⁷
(F seventh)

BASS
NOTES -fundamental F /alternate C

F^M7
(F major seventh)

BASS
NOTES -fundamental F /alternate C

F^{7b5} or F⁷⁽⁻⁵⁾
(F seventh with flattened fifth)

BASS
NOTES -fundamental F /alternate C^b(B)

F₂

BASS
NOTES -fundamental F /alternate C

F^m
(F minor)

BASS
NOTES -fundamental F /alternate C[#]

F^{aug} or F⁺
(F augmented)

BASS
NOTES -fundamental F /alternate C

F^m⁶
(F minor sixth)

BASS
NOTES -fundamental F /alternate C

F⁷
(F seventh) three note version with fifth omitted

BASS
NOTES -fundamental F /alternate C

F^m7
(F minor seventh)

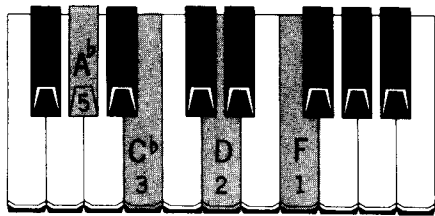
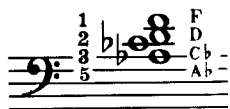
BASS
NOTES -fundamental F /alternate C[#]

F^{7#5} or F⁷⁽⁺⁵⁾
(F seventh with raised fifth)

F 3

F^{dim}7 or F^o7

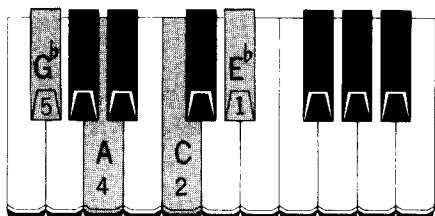
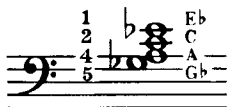
(F diminished seventh)



BASS
NOTES - fundamental F /alternate C^b(B)

F7^b9 or F7(-9)

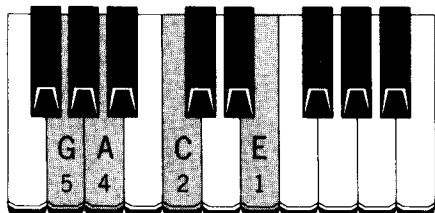
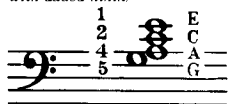
(F seventh plus flatted ninth)



BASS
NOTES - fundamental F /alternate C

F^M7 add⁹

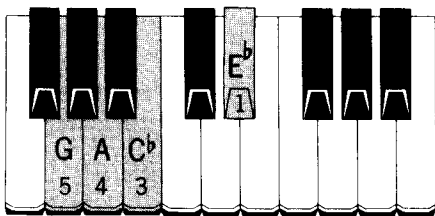
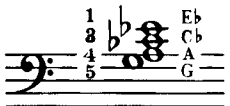
(F major seventh with added ninth)



BASS
NOTES - fundamental F /alternate C

F⁹b5 or F⁹(-5)

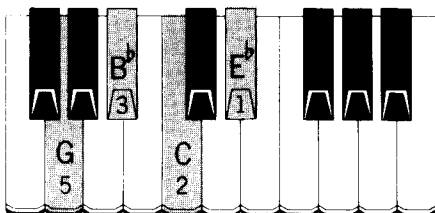
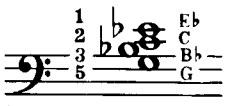
(F ninth with flatted fifth)



BASS
NOTES - fundamental F /alternate C^b(B)

F¹¹

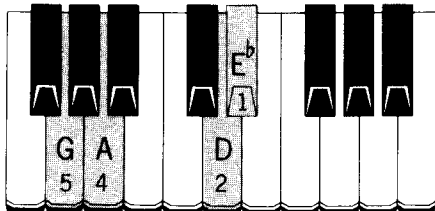
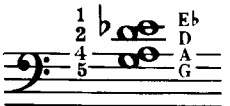
(F eleventh)



BASS
NOTES - fundamental F /alternate C

F¹³

(F thirteenth)

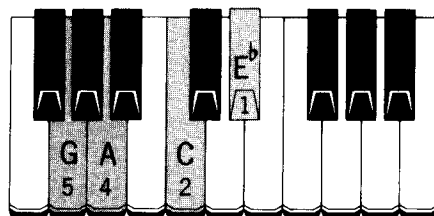
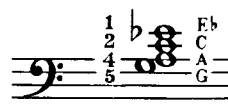


BASS
NOTES - fundamental F /alternate C

F 4

F⁹

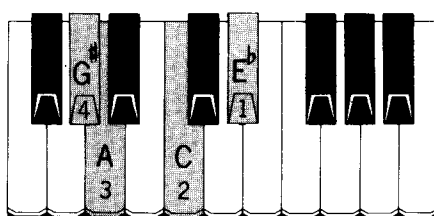
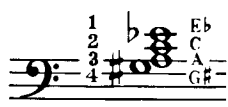
(F ninth)



BASS
NOTES - fundamental F /alternate C

F7[#]9 or F7(+9)

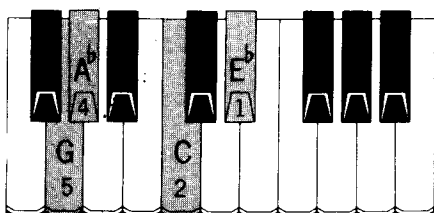
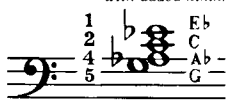
(F seventh plus raised ninth)



BASS
NOTES - fundamental F /alternate C

F^m7 add⁹

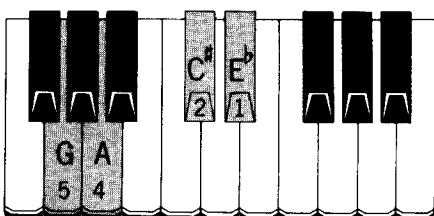
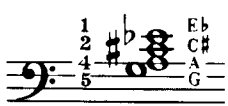
(F minor seventh with added ninth)



BASS
NOTES - fundamental F /alternate C

F⁹#5 or F⁹(+5)

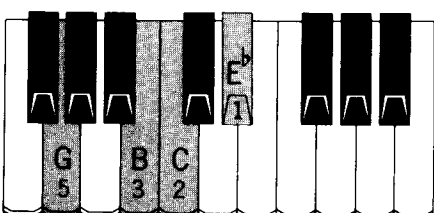
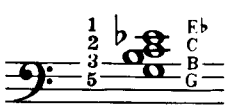
(F ninth with raised fifth)



BASS
NOTES - fundamental F /alternate C[#]

F^{aug}11

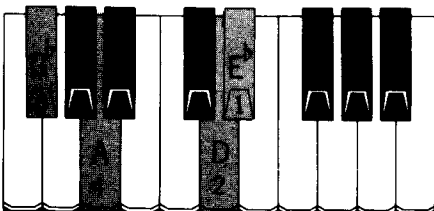
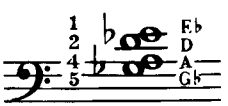
(F augmented eleventh)



BASS
NOTES - fundamental F /alternate C

F¹³b9 or F¹³(-9)

(F thirteenth with flatted ninth)

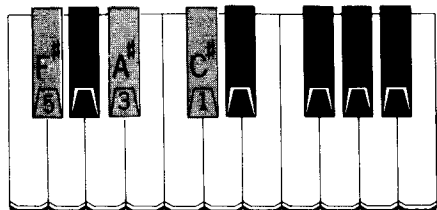
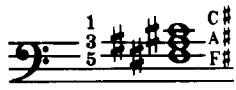


BASS
NOTES - fundamental F /alternate C

F#¹

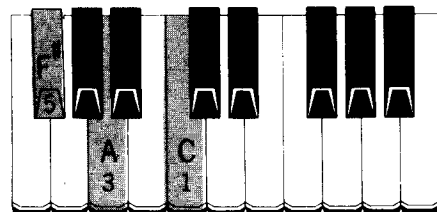
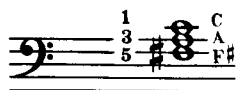
also G^b

F#
(F# major)



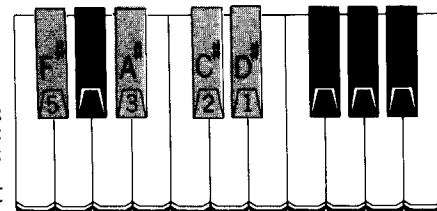
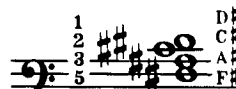
BASS
NOTES - fundamental F# /alternate C#

F# dim or F#^o
(F# diminished)



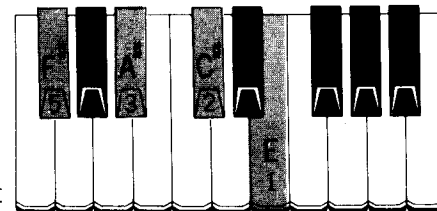
BASS
NOTES - fundamental F# /alternate C

F#⁶
(F# sixth)



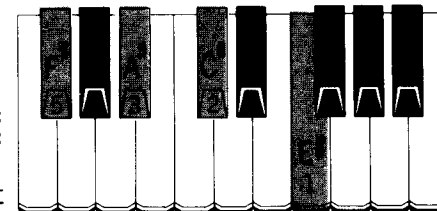
BASS
NOTES - fundamental F# /alternate C#

F#⁷
(F# seventh)



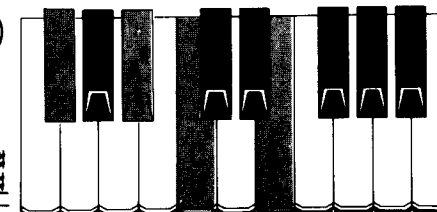
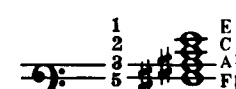
BASS
NOTES - fundamental F# /alternate C#

F#^M7
(F# major seventh)



BASS
NOTES - fundamental F# /alternate C#

F#^{7b5} or F#⁷⁽⁻⁵⁾
(F# seventh with flatted fifth)

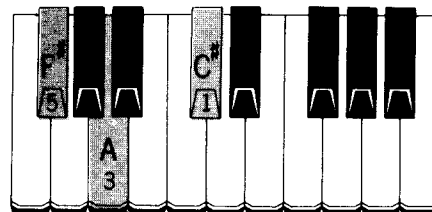
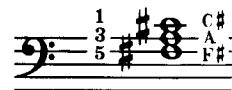


BASS
NOTES - fundamental F# /alternate C

F#²

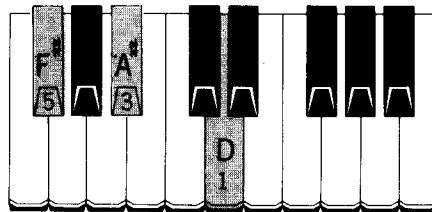
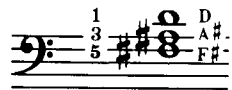
also G^b

F#^m
(F# minor)



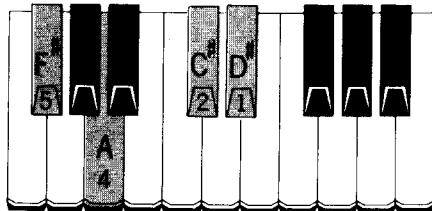
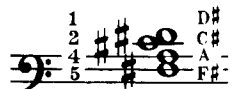
BASS
NOTES - fundamental F# /alternate C#

F# aug or F#⁺
(F# augmented)



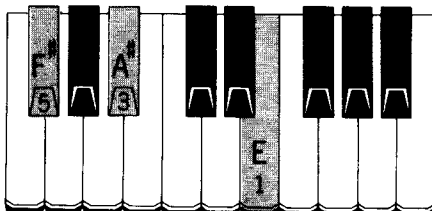
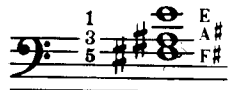
BASS
NOTES - fundamental F# /alternate D

F#^m⁶
(F# minor sixth)



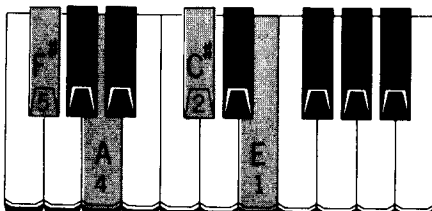
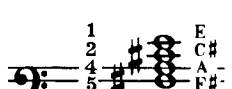
BASS
NOTES - fundamental F# /alternate C#

F#⁷
(F# seventh) three note version with fifth omitted



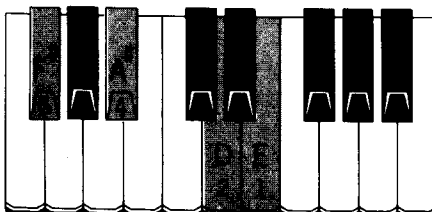
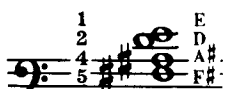
BASS
NOTES - fundamental F# /alternate C#

F#^m7
(F# minor seventh)



BASS
NOTES - fundamental F# /alternate C#

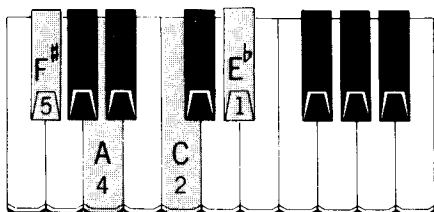
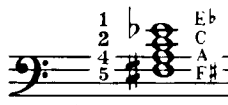
F#^{7#5} or F#⁷⁽⁺⁵⁾
(F# seventh with raised fifth)



BASS
NOTES - fundamental F# /alternate D

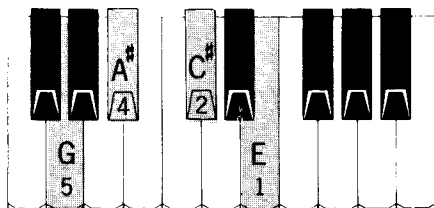
F# 3 also Gb

F#^{dim} 7 or F#^o7
(F# diminished seventh)



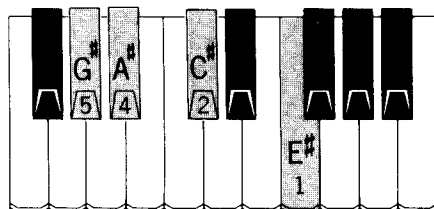
BASS
NOTES - fundamental F# /alternate C

F#7^b9 or F#7(-9)
(F# seventh plus flatted ninth)



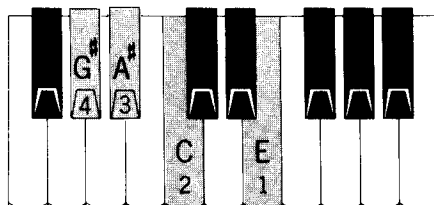
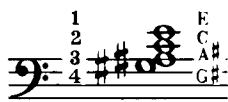
BASS
NOTES - fundamental F# /alternate C#

F#M 7 add 9
(F# major seventh with added ninth)



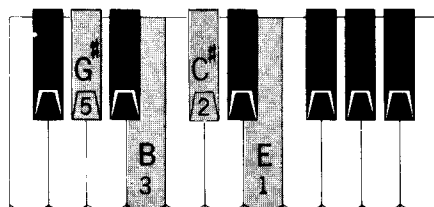
BASS
NOTES - fundamental F# /alternate C#

F#9^b5 or F#9(-5)
(F# ninth with flatted fifth)



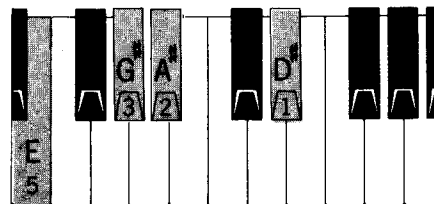
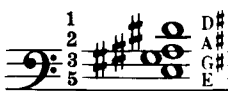
BASS
NOTES - fundamental F# /alternate C

F#11
(F# eleventh)



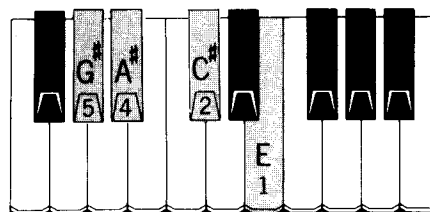
BASS
NOTES - fundamental F# /alternate C#

F#13
(F# thirteenth)



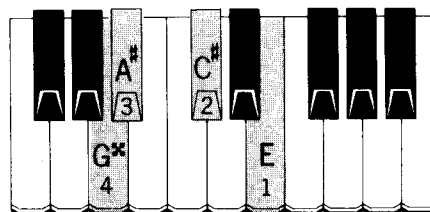
BASS
NOTES - fundamental F# /alternate C#

F# 4 also Gb



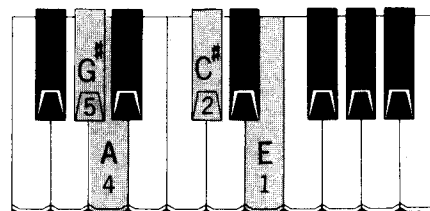
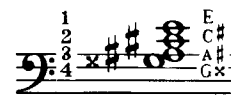
BASS
NOTES - fundamental F# /alternate C#

F#9
(F# ninth)



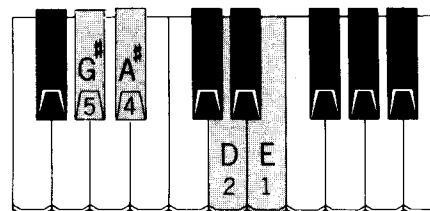
BASS
NOTES - fundamental F# /alternate C#

F#7#9 or F#7(+9)
(F# seventh plus raised ninth)



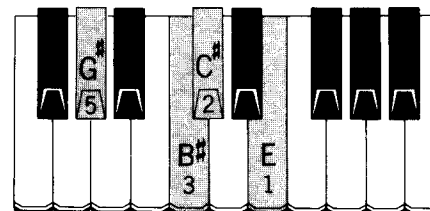
BASS
NOTES - fundamental F# /alternate C#

F#m 7 add 9
(F# minor seventh with added ninth)



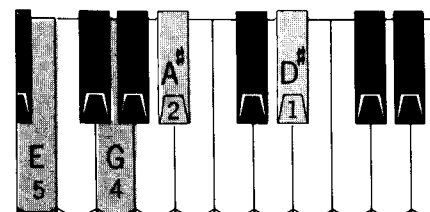
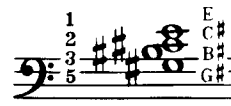
BASS
NOTES - fundamental F# /alternate D

F#9#5 or F#9(+5)
(F# ninth with raised fifth)



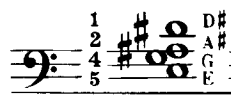
BASS
NOTES - fundamental F# /alternate C#

F#aug 11
(F# augmented eleventh)



BASS
NOTES - fundamental F# /alternate C#

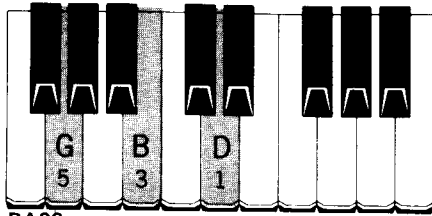
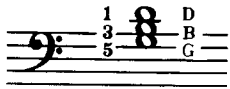
F#13^b9 or F#13(-9)
(F# thirteenth with flatted ninth)



G 1

G

(G major)

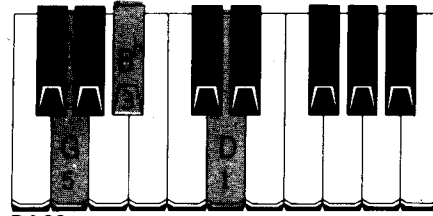
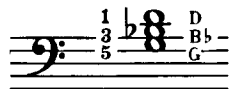


BASS NOTES -fundamental G /alternate D

G 2

Gm

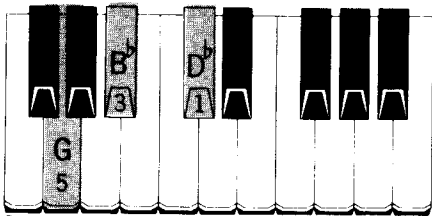
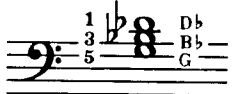
(G minor)



BASS NOTES -fundamental G /alternate D

Gdim or G^o

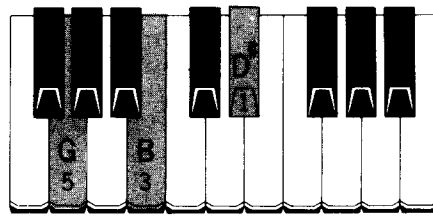
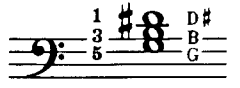
(G diminished)



BASS NOTES -fundamental G /alternate D^b

Gaug or G⁺

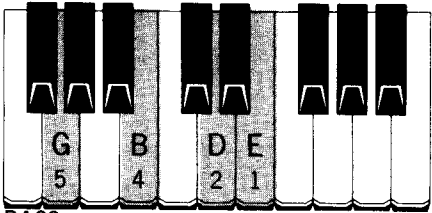
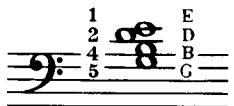
(G augmented)



BASS NOTES -fundamental G /alternate D[#]

G⁶

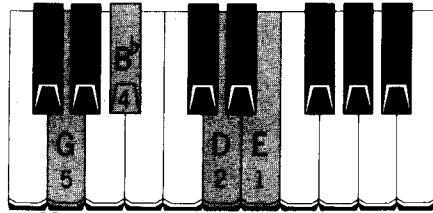
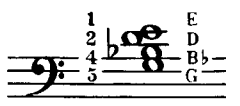
(G sixth)



BASS NOTES -fundamental G /alternate D

Gm⁶

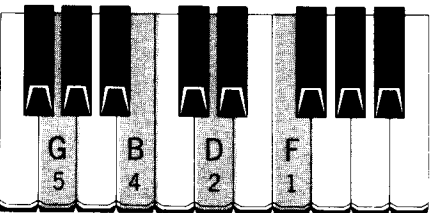
(G minor sixth)



BASS NOTES -fundamental G /alternate D

G⁷

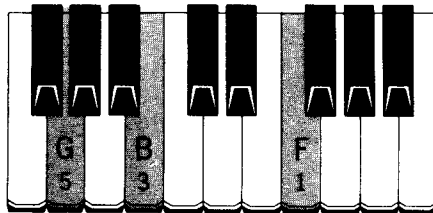
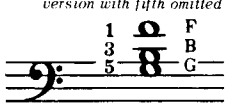
(G seventh)



BASS NOTES -fundamental G /alternate D

G⁷

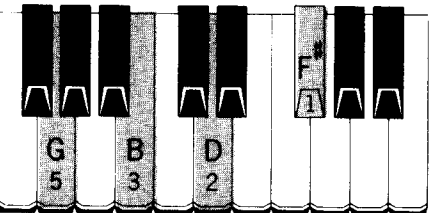
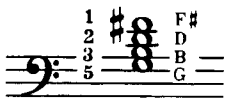
(G seventh) three note version with fifth omitted



BASS NOTES -fundamental G /alternate D

G^M7

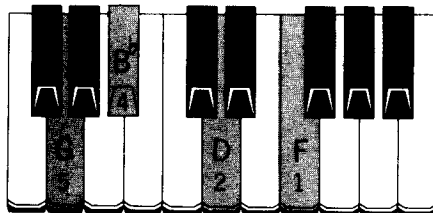
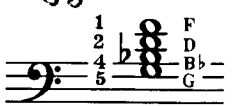
(G major seventh)



BASS NOTES -fundamental G /alternate D

Gm⁷

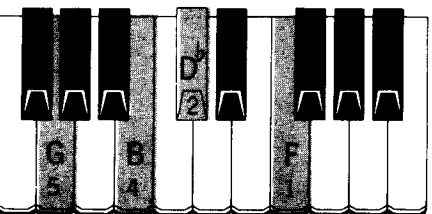
(G minor seventh)



BASS NOTES -fundamental G /alternate D

G^{7b5} or G⁷⁽⁻⁵⁾

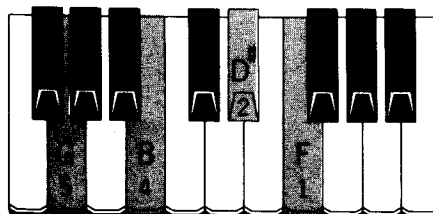
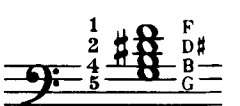
(G seventh with flatted fifth)



BASS NOTES -fundamental G /alternate D^b

G^{7#5} or G⁷⁽⁺⁵⁾

(G seventh with raised fifth)

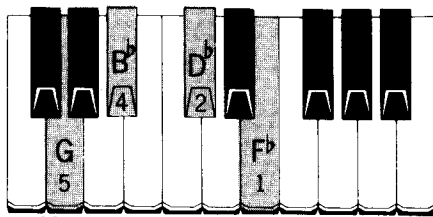


BASS NOTES -fundamental G /alternate D[#]

G ³

G dim7 or G^{o7}

(G diminished seventh)

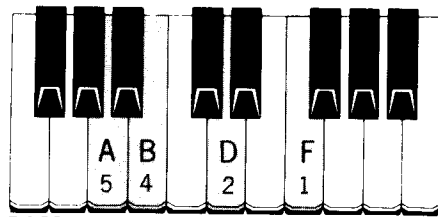
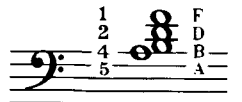


BASS
NOTES -fundamental G /alternate D^b

G ⁴

G⁹

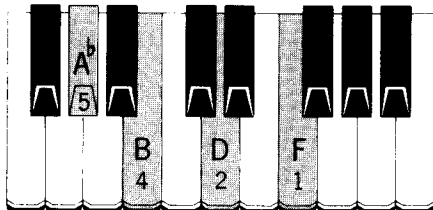
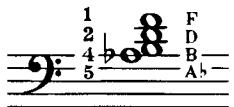
(G ninth)



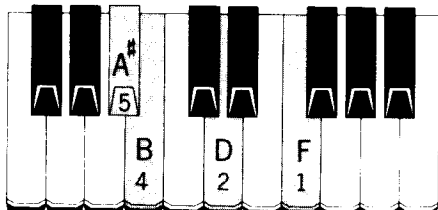
BASS
NOTES -fundamental G /alternate D

G^{7b9} or G⁷⁽⁻⁹⁾

(G seventh plus flatted ninth)

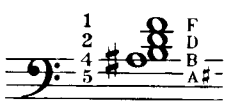


BASS
NOTES -fundamental G /alternate D



G^{7#9} or G⁷⁽⁺⁹⁾

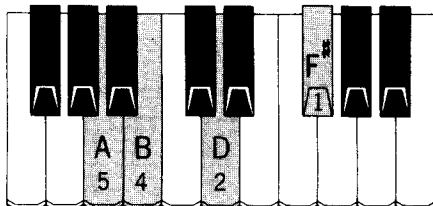
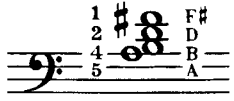
(G seventh plus raised ninth)



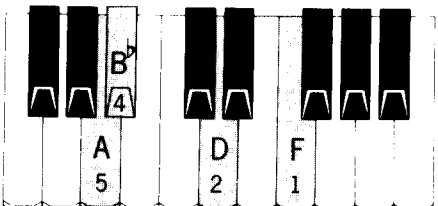
BASS
NOTES -fundamental G /alternate D

G^{M7} add⁹

(G major seventh with added ninth)

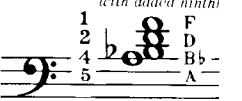


BASS
NOTES -fundamental G /alternate D



G^{m7} add⁹

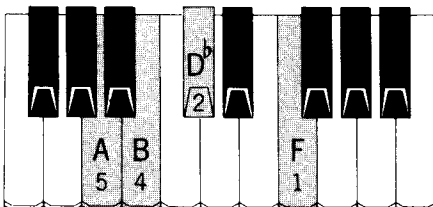
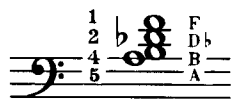
(G minor seventh with added ninth)



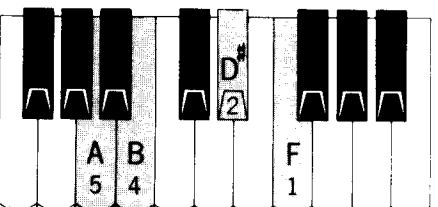
BASS
NOTES -fundamental G /alternate D

G^{9b5} or G⁹⁽⁻⁵⁾

(G ninth with flatted fifth)

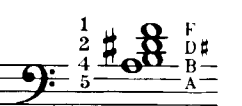


BASS
NOTES -fundamental G /alternate D^b



G^{9#5} or G⁹⁽⁺⁵⁾

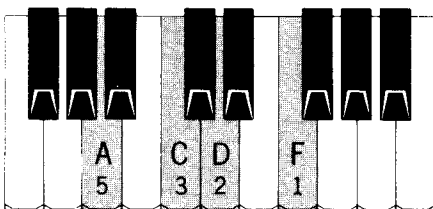
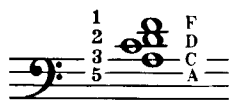
(G ninth with raised fifth)



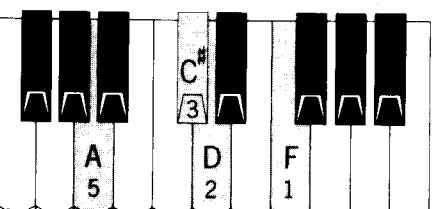
BASS
NOTES -fundamental G /alternate D[#]

G¹¹

(G eleventh)

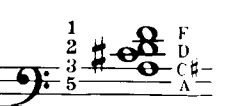


BASS
NOTES -fundamental G /alternate D



G^{aug11}

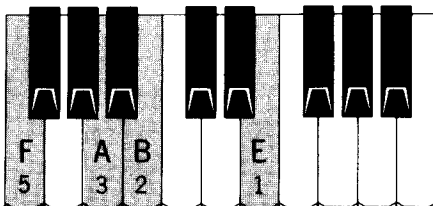
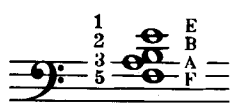
(G augmented eleventh)



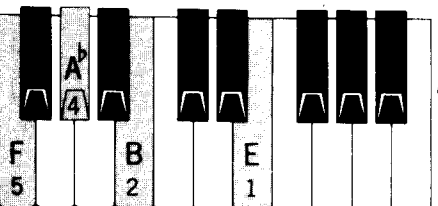
BASS
NOTES -fundamental G /alternate D

G¹³

(G thirteenth)

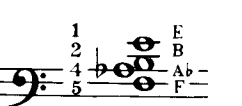


BASS
NOTES -fundamental G /alternate D



G^{13b9} or G¹³⁽⁻⁹⁾

(G thirteenth with flatted ninth)



BASS
NOTES -fundamental G /alternate D

\$4.95 in USA

CHORD CHART

| CHORD | NOTES OF THE MAJOR SCALE |
|------------------------|--------------------------|
| Major | 1 3 5 |
| Minor | 1 b3 5 |
| Diminished <i>Dimp</i> | 1 b3 b5 |
| Augmented <i>+</i> | 1 3 #5 |
| Major 6th | 1 3 5 6 |
| Minor 6th | 1 b3 5 6 |
| 7th | 1 3 5 b7 |
| Major 7th | 1 3 5 7 |
| Minor 7th | 1 b3 5 b7 |
| 7th with b5 | 1 3 b5 b7 |
| 7th with #5 | 1 3 #5 b7 |
| Diminished 7th | 1 b3 b5 bb7 |
| 9th | 1 3 5 b7 9 |
| 7th with b9 | 1 3 5 b7 b9 |
| 7th with #9 | 1 3 5 b7 #9 |
| Major 7th with 9 | 1 3 5 7 9 |
| 9th with b5 | 1 3 b5 b7 9 |
| 11th | 1 3 5 b7 9 11 |
| Augmented 11th | 1 3 5 b7 9 #11 |
| 13th | 1 3 5 b7 9 13 |
| 13th with b9 | 1 3 5 b7 b9 13 |

MAJOR SCALE CHART

| | 1 | 2 | 3 | 4 | 5 | 6 | 7 | 8 | 9 | 10 | 11 | 12 | 13 |
|----------------|----------------|----------------|----------------|----------------|----------------|----------------|----|----------------|----------------|----------------|----------------|----------------|----------------|
| A | A | B | C# | D | E | F# | G# | A | B | C# | D | E | F# |
| A ^b | A ^b | B ^b | C | D ^b | E ^b | F | G | A ^b | B ^b | C | D ^b | E ^b | F |
| B | B | C# | D# | E | F# | G# | A# | B | C# | D# | E | F# | G# |
| B ^b | B ^b | C | D | E ^b | F | G | A | B ^b | C | D | E ^b | F | G |
| C | C | D | E | F | G | A | B | C | D | E | F | G | A |
| C# | C# | D# | E# | F# | G# | A# | B# | C# | D# | E# | F# | G# | A# |
| D | D | E | F# | G | A | B | C# | D | E | F# | G | A | B |
| D ^b | D ^b | E ^b | F | G ^b | A ^b | B ^b | C | D ^b | E ^b | F | G ^b | A ^b | B ^b |
| E | E | F# | G# | A | B | C# | D# | E | F# | G# | A | B | C# |
| E ^b | E ^b | F | G | A ^b | B ^b | C | D | E ^b | F | G | A ^b | B ^b | C |
| F | F | G | A | B ^b | C | D | E | F | G | A | B ^b | C | D |
| F# | F# | G# | A# | B | C# | D# | E# | F# | G# | A# | B | C# | D# |
| G | G | A | B | C | D | E | F# | G | A | B | C | D | E |
| G ^b | G ^b | A ^b | B ^b | C ^b | D ^b | E ^b | F | G ^b | A ^b | B ^b | C ^b | D ^b | E ^b |



Alfred Publishing Co., Inc.
 16380 Roscoe Blvd.
 P.O. Box 10003
 Van Nuys, CA 91410-0003



0 38081 01039 7