

Epiphany

Music and Lyrics by
NICK ROBERTSON

Energetic, with a strong pulse ♩ = 75

SEAN

l.h.

r.h. *f*

>

>

>

> etc.

8

I'll try to de-scribe — what oc-

15

curred on that night, how the mist cleared a-way — sliced by dag-gers of light, im -

15

©2009

2
21

Epiphany

a-gine the dew — seep-ing in-to your shoes and the bun-nies sur - round-ing like

21

27

children in pews. — She came from on

27

34

high with this come hith-er voice and she crashed down with glo-ry as

34

Epiphany

39

if she'd no choice, then just be-tween me and the Mo-ther of God, I

39

45

learned of my des-ti-ny there on _____ the sod. _____

45

52

She said Sean _____ Sean _____

52

Epiphany

— You're meant to be a queen my boy, gos-pel of the Lord, —

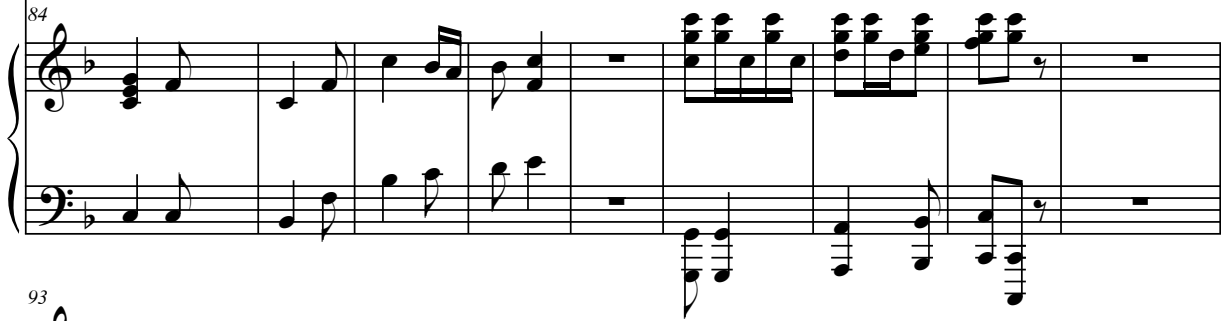
— you'll learn to walk in six inch - heels and then you'll find your re - ward —

— So pile on foun da-tion with lots of mas - car-a and just a spray of Cha - nel.

84



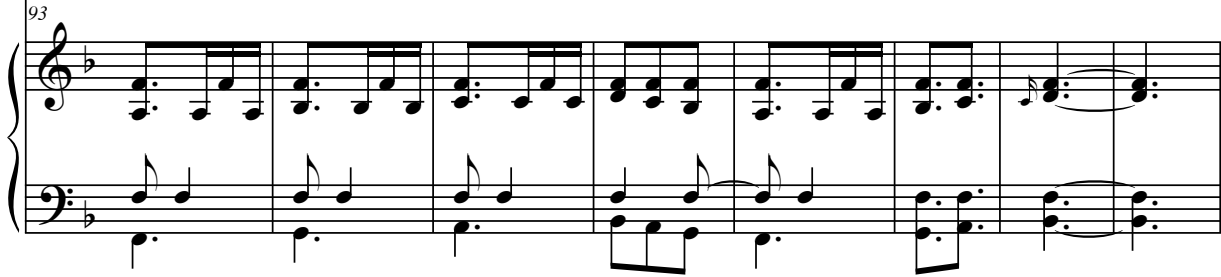
84



93



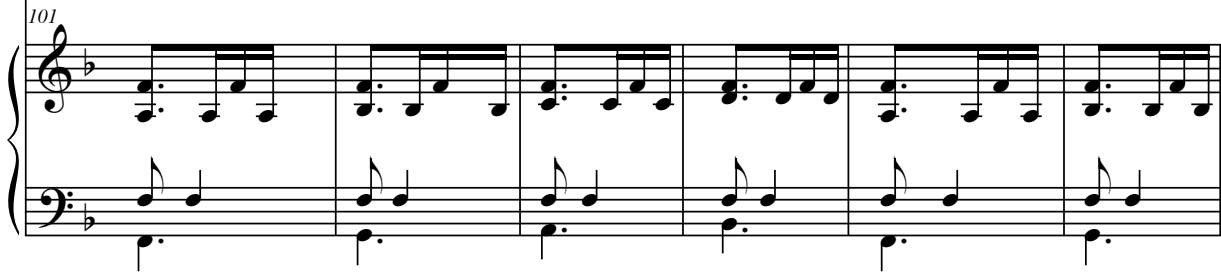
93



101



101



Epiphany

called me a bird, so I stripped right on down _____ to my tight lit-tle pants, but she

107

113

said keep on go-ing, this G-string _____ is your chance.

113

119

And sud-den-ly I'm filled with ques-tions: Where am I

119

Epiphany

125

coming from? Where am I go-ing? Where am I? Sud-den - ly I need to know the

125

Piano accompaniment for measures 125-131, featuring a steady eighth-note accompaniment in the right hand and a bass line in the left hand.

132

mean - ing of life and all of those ans - wers I nev - er knew, like

132

Piano accompaniment for measures 132-137, continuing the eighth-note accompaniment.

138

why the sky's pur-ple, — yel low, and blue, but Ma-ry just smiled her

138

Piano accompaniment for measures 138-143, concluding the piece with a final chord.

Epiphany

144

Ma - ry smile and said.. _____ Sean _____

144

152

_____ Sean _____ You're meant to be a

152

161

queen my - boy, gos-pel of the lord, _____ you'll learn to

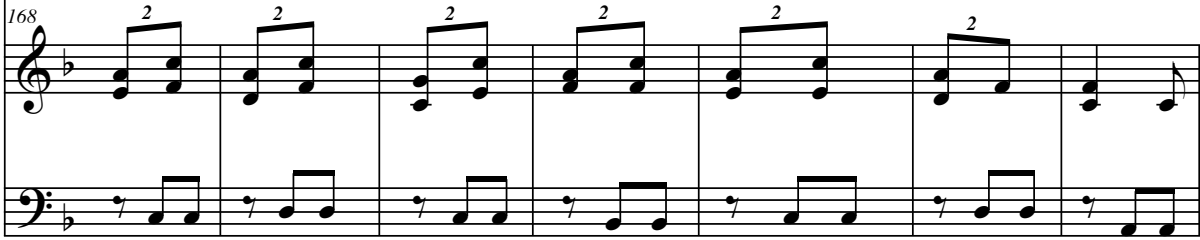
161

168



walk in six inch - heels and then you'll find your re - ward _____ So

168



pile on four da tion with lots of mas - car-a and just a spray of Cha - nel.

175



You're the ho - ly Mis-ter Sis-ter, so girl _____ flaunt it like

175



182



182



hell. _____ And then she as -

191

This system contains measures 191 through 199. The vocal line begins with a long note on 'hell.' followed by a rest. The piano accompaniment features a steady eighth-note pattern in the right hand and a bass line in the left hand.

cend-ed to her throne on high and al - one in my thong, I star-ted to cry, but

200

200

This system contains measures 200 through 206. The vocal line continues with 'cend-ed to her throne on high and al - one in my thong, I star-ted to cry, but'. The piano accompaniment continues with the same rhythmic pattern.

out of the moon _____ shot this blind-ing white ray, 'twas her sem-i-ab - u-sive sign say-ing I'd _

207

207

This system contains measures 207 through 213. The vocal line begins with 'out of the moon' followed by a rest, then 'shot this blind-ing white ray, 'twas her sem-i-ab - u-sive sign say-ing I'd _'. The piano accompaniment continues with the same rhythmic pattern.

214

I'd found my way.

The vocal staff is in a key with one flat (B-flat) and a 4/4 time signature. It begins with a whole note chord of B-flat and D. The melody consists of a quarter note G, a quarter note F, a quarter note E, and a quarter note D. A slur covers the last two notes, E and D. The staff ends with a double bar line.

214

The piano accompaniment is in the same key and time signature. The right hand (RH) starts with a whole note chord of B-flat and D. It then moves to a series of eighth notes: G, F, E, D, C, B, A, G. The left hand (LH) starts with a whole note chord of B-flat and D. It then moves to a series of eighth notes: G, F, E, D, C, B, A, G. The piece concludes with a final chord of B-flat and D, which is held for two measures.