

EVERYBODY'S FOOL

Written by Ben Moody,
Amy Lee and David Hodges

Moderately ♩ = 92





*Guitar in Drop D tuning: ⑥ = D.

D5



1. Per - fect by na - ture, i - cons of
2. Look, here she comes now, bow down and



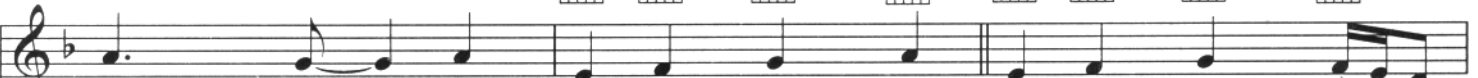
self in - dul - gence. Just what we all need,
stare in won - der. Oh how we love you,



1. To Next Strain



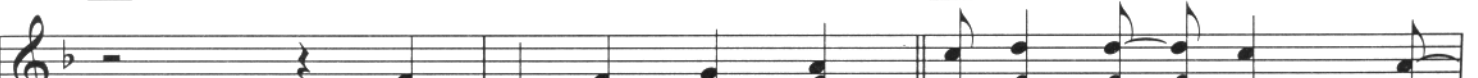
2.



more lies a - bout a world that you're pre - tend - ing.
no flaws when



Chorus:



But now I know she nev - er was and nev -
nev - er was and nev -





er will be. Have you no shame, don't you see me?
 er will be. You don't know how you've betrayed me.



You know you've got ev - 'ry - bod - y fooled.
 Some - how you've got ev - 'ry - bod - y fooled.



'ry - bod - y fooled.

Bridge:



With - out the mask where will you hide?

Gm Dm Gm A/D

Can't find your - self lost in your lie.

D5 A5 C5 A5 Bb5

I know the truth now. I know who you

G5 A5 Bb5 A5 C5 A5

are. And I don't love you any - more. It

Chorus:
D5 Bb5 A5 C5 A5

nev - er was and nev - er will be.
nev - er was and nev - er will be.



You don't know how you've betrayed me. And somehow you've got ev -
 You're not real and you can't save me. Some-how now you're ev -

1.



2.

'ry - bod - y fooled. 'ry - bod - y's fool. (Ooh. _____)
 It



Oh. _____



Oh. _____ Oh. _____)