

Dvorak

Dobrú noc, má milá

Op. 73, No. 1

(Slovakia)

Lento

musical score for piano introduction, 2/4 time, key of D major. The right hand features a melodic line with a slur and the instruction *molto espressivo*. The left hand has a rhythmic accompaniment of eighth notes with a dynamic marking of *mf*. The piece concludes with a *dimin.* marking.

molto espressivo

vocal line musical score, 2/4 time, key of D major. The melody is marked *p* and *molto espressivo*. The lyrics are: Do - brú noc, má mi - lá, do - brú noc,

Do - brú noc, má mi - lá, do - brú noc,

piano accompaniment for the first vocal line, 2/4 time, key of D major. The left hand has a rhythmic accompaniment of eighth notes with a dynamic marking of *pp*. The right hand has a melodic accompaniment. The piece concludes with a *Red. sempre simile* marking.

Red. sempre simile

dim.

pp

vocal line musical score, 2/4 time, key of D major. The melody is marked *dim.* and *pp*. The lyrics are: nech ti je Pán Boh sám na - po - moc.

nech ti je Pán Boh sám na - po - moc.

piano accompaniment for the second vocal line, 2/4 time, key of D major. The left hand has a rhythmic accompaniment of eighth notes with a dynamic marking of *dim.*. The right hand has a melodic accompaniment. The piece concludes with a *pp* marking.

dim.

pp

p *cresc.* *f* *ff.*

Do - brú noc, do - bre spi, nech sa ti sní - va - jú,

p *pp*

nech sa ti sní - va - jú mi - lé - sny.

pp *f* *ff.*

Do - brú noc, do - bre spi, nech sa ti sní - va - jú,

pp *cresc.* *mf*

nech sa ti sní - va - jú - mi - lé - sny!

svo - je ti da - - ru - jem, ž e ř a ř á

pp *pp*

dim. *pp* *pp*

mi - lu - jem, sr - deč - ko svo - je ti, sr - deč - ko

cresc. *f* *ff.* *pp*

cresc. *f* *ff* *pp*

svo - je ti da - - ru - jem.

cresc. *mf*

cresc. *mf* *f*

p *dim.* *pp*

p *dim.* *pp*

Red.

*

Dvorak
Zalo dievca, zalo trávu
Op. 73, No. 2
(Slovakia)

Allegretto grazioso

mp

Ža - lo diev-ča, ža - lo trá - vu ne - da - le - ko Te - meš-vá - ru,

mp

This system contains the first four measures of the piece. The vocal line is in treble clef with a key signature of two sharps (D major) and a 2/4 time signature. The piano accompaniment is in grand staff. The lyrics are: 'Ža - lo diev-ča, ža - lo trá - vu ne - da - le - ko Te - meš-vá - ru,'.

keď na-ža - lo, po - - via-za - lo, na šu-haj - ka za - vo-la - lo,

fz.

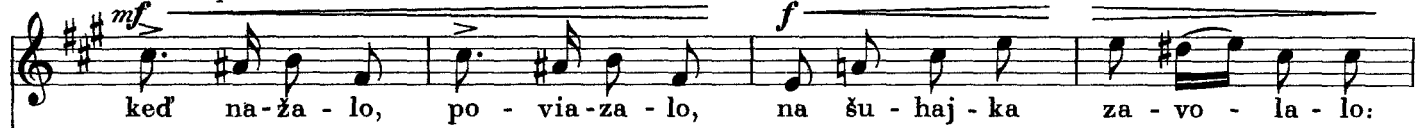
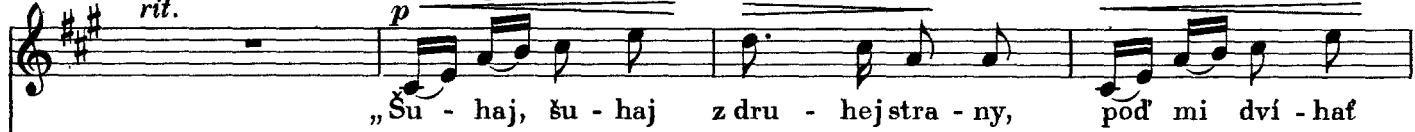
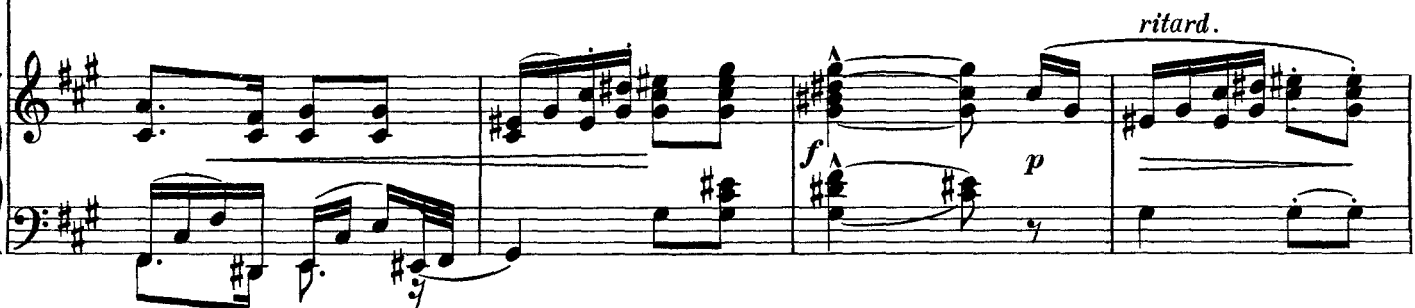
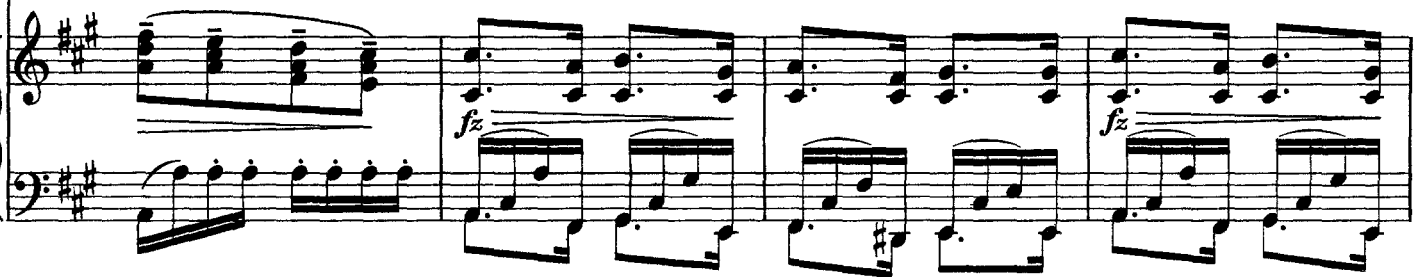
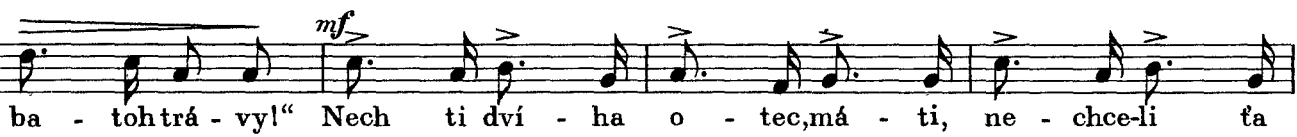
This system contains measures 5-8. The vocal line continues with the lyrics: 'keď na-ža - lo, po - - via-za - lo, na šu-haj - ka za - vo-la - lo,'. The piano accompaniment features a more active texture with sixteenth-note patterns in the right hand. The dynamic marking *fz.* (forzando) is present.

na šu - haj - ka za - vo - la - lo;

f *ritard.*

f *pp* *ritard.*

This system contains the final four measures of the piece. The vocal line concludes with the lyrics: 'na šu - haj - ka za - vo - la - lo;'. The piano accompaniment ends with a sustained chord. The dynamic marking *f* (forte) is used for the final vocal note, and *pp* (pianissimo) is used for the final piano chord. The tempo marking *ritard.* (ritardando) is indicated above the final measures.

in tempo*in tempo**rit.**in tempo**rit.**in tempo*

[mf] *in tempo*

nech ti dví - ha o - tec, má - ti, ne - chce - li ta

*in tempo**pp**fz**fz**f*

za mňa dá - ti.

*in tempo**p*

Eš - te ta len ko - lim - ba - li,

*rit.**in tempo**p**pp*

už ta za mňa slu - bo - va - li: eš - te si len

*mf**mf*

hús - ky pás - la, už si v mo - jom srd - ci ria - stla,

*dimin.**dimin.*

p *ppritard.*

už si v mo-jom srd - ci ria - stla.

in tempo *mf*

Eš - te si len hús - ky pás - la, už si v mo - jom

rit. *in tempo* *p*

srd - ci ria - stla, už si v mo - jom

p

srd - ci ria - stla.

Dvorak
 Ach, není tu
 Op. 73, No. 3
 (Czech)

Andante

The piano introduction consists of three measures. The right hand plays a series of chords, starting with a piano (*p*) dynamic and moving to a forte (*f*) dynamic. The left hand plays a steady eighth-note accompaniment.

The vocal line begins with the lyrics "Ach, ne-ní, ne-ní tu, co by mě tě-ší-lo,". The piano accompaniment is marked *pp* and features a descending eighth-note pattern in the right hand and a steady eighth-note accompaniment in the left hand. The left hand has a *Red.* (Reduction) marking under the first four measures and an asterisk (*) under the fifth measure.

The vocal line continues with the lyrics "ach, ne-ní tu, ne-ní, co mě tě-ší. Co mě tě-ší-va-lo,". The piano accompaniment is marked *f* and *dimin.* (diminuendo). The left hand has *Red.* markings under the first and third measures, an asterisk (*) under the second measure, and *Red.* markings under the fourth and fifth measures.

vo-dou u-ply - nu-lo, ach, ne - ní tu, ne - ní, co mě tě -

ší! Vždycky mně dá - va - ji, co se mně ne - lí - bí,

vždy - cky mně dá - va - ji, co já nechci. Dá - va - jí mně vdov - ce,

ten má jen pál srd - ce, ach, ne - ní tu, ne - ní,

ff *p*
 co mě tě - ší

Un poco meno mosso

pp
 Ach, ne-ní, ne - ní tu, co by mě tě - ší - lo, ach, ne-ní, ne - ní tu,

p *ff*
 co mě tě - ší. Ach, ne - ní, ne - ní tu,

pp
 co mě tě - ší

Dvorak
 Ej, mám já kona faku
 Op. 73, No. 4
 (Slovakia)

Allegretto

mp *ritard.* *pp* *mf* *in tempo* *f*

Ej, mám já ko-ňa fa - ku, co ma do-bre no - sí, ej, mám já ko-ňa fa - ku,

mp *ritard.* *pp* *mf* *in tempo* *f*

ritard. *p* *in tempo*

co ma do-bre no - sí po horách, po dolách, po stu-de - nej

ritard. *in tempo* *p* *pp* *f*

Red. *Red.* *Red.* *Red.* *Red.*

f *un poco ritard.* *in tempo*

ro - si, po horách, po do-lách, — po stu-de - nej ro - si.

p cresc. *[mf]* *un poco ritard.* *in tempo*

Red. *Red.* *** *Red.* ***

[in tempo]
mp

Ej, mal som sí - ko - ren - ku, zlá - ma - la si

ritard. *pp* *in tempo* *rit.* *p* *in tempo*

nož - ku, ej, mal som sí - ko - ren - ku, zlá - ma - la si nož - ku: po - daj mi,

ritard. *pp* *in tempo* *rit.* *p* *in tempo*

má mi - lá, čer - stvej vo - dy troš - ku, po - daj mi,

un poco ritard. *in tempo*

má mi - lá, čer - stvej vo - dy troš - ku.

in tempo
mp

Ej, mal som fra-je-reč - ku a - ko i - ske - reč - ku; ej, mal som

in tempo
p

ritard. *pp* *p* *in tempo*

mf *ritard.* *p* *in tempo*

fra-je-reč - ku a - ko i - ske - reč - ku: a - le ma skla-ma-la,

mf *ritard.* *p* *pp* *pp* *in tempo*

stre - la v jej' sr - deč - ku, a - le ma skla - ma - la, —

un poco ritard. *in tempo*

stre - la v jej' sr - deč - ku!

un poco ritard. *cresc.* *ff* *in tempo*