

# ONE OF THESE NIGHTS

WORDS AND MUSIC BY  
DON HENLEY AND GLENN FREY

MODERATELY

Em

Em/D

Cmaj7



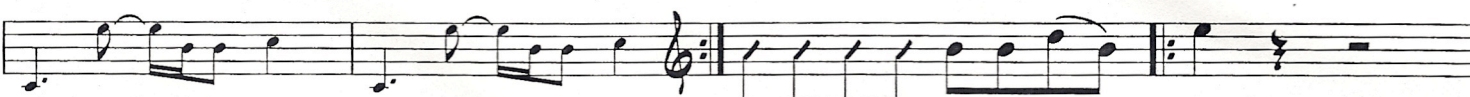
(BASS RIFF)

Am7



A VERSE:  
Em

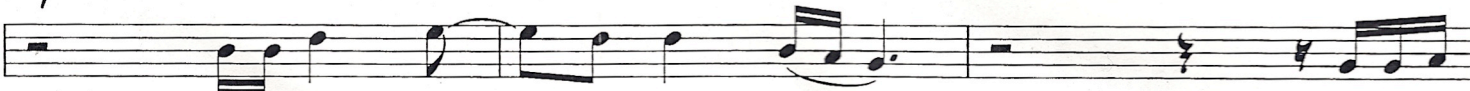
1.  
2. Bm7



1. One of these nights,  
2. See additional lyrics

Em/D

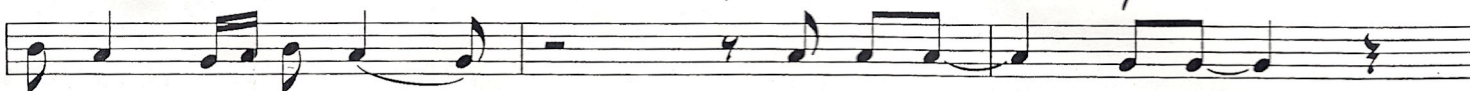
Cmaj7



one of these cra - zy old nights, we're gon-na

Am7

Em D/E Em



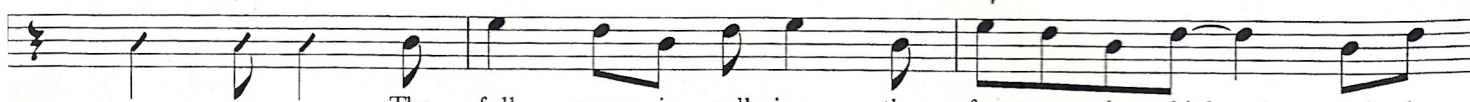
find out, pret-ty ma - ma, what turns on your lights.

Bm

A/B Bm

Em

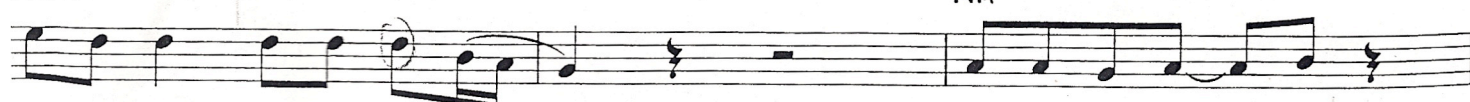
Em/D



The full moon is call - ing, the fev - er is high, and the

Cmaj7

Am



wick - ed wind whis - pers and moans. You got your de - mons,

you got de - si - res, well, I got a few of my own.

EM D/E EM Bm7

**B** CHORUS:

Ooh, some - one to be kind to in be - tween the dark and the light.

CMA9 GMA7

Ooh, 2. See additional lyrics.

Ooh, com - ing right be - hind you,

CMA9

swear I'm gon - na find you one of these nights. One of these one of these nights. One of these

Am Bm D Bm

**C** IMPROVISE

nights, in be - tween the dark and the light,

CMA9 GMA7

com - ing right be - hind you, swear I'm gon - na find you,

CMA9

get you, ba - by, one of these nights. One of these nights.

GMA7 CMA9

One of these

GMA7

REPEAT AD LIB. AND FADE

Verse 2:  
 One of these dreams,  
 One of these lost and lonely dreams, we're gonna find one,  
 One that really screams.  
 I've been searching for the daughter of the devil himself,  
 I've been searching for an angel in white.  
 I've been waiting for a woman who's a little of both,  
 And I can feel her but she's nowhere in sight.

Chorus 2:  
 Ooh, loneliness will blind you  
 In between the wrong and the right.  
 Ooh, coming right behind you,  
 Swear I'm gonna find you one of these nights.