

# MY STRONGEST SUIT

Music by ELTON JOHN  
Lyrics by TIM RICE

*Quasi recitative*

AMNERIS:

Db (add9)



Bb m



In life one has to face a huge as - sort - ment — Of

Gb



Db



Gb/Db



Db



Db/C



nau-se - at - ing fads and good ad - vice. There's health and fit - ness, di - et and de -

Bb m



Gb



Ab



F/C



port - ment, And oth - er point - less forms of sac - ri - fice. Con - ver - sa - tion? Wit? I am a

Bbm



Bbm/Ab



Gb7



Gb



Ab



doubt-er. —

Man-ners? Charm?

They're no way to im-press. —

So for-

Db



Db/C



Bbm



Bbm/Ab



Gb



Ab



get the in-ner me, —

ob-serve the out - er. —

I am what I wear and how I dress. —

Moderately

Db



Vamp (last time)

Oh, — now

I —

be - lieve — in look - ing

like my

*p*

Bbm



Gb



time on earth — is cook - ing

Wheth-er

pol - ka-dot - ted, striped, —

or e - ven —

Db

checked With some glam - our guar - an - tee - ing - Ev - 'ry

Bbm

Gb

Cb/Gb Gb

fi - bre of - my be - ing is dis - played to quite re - mark - a - ble - ef - fect -

Db

Gb/Db Db

Fm7

From your cra - dle vi - a trous - seu - to your death -

**PALACE WOMEN:**

Ah

Bbm



Gb



Cb/Gb



Gb

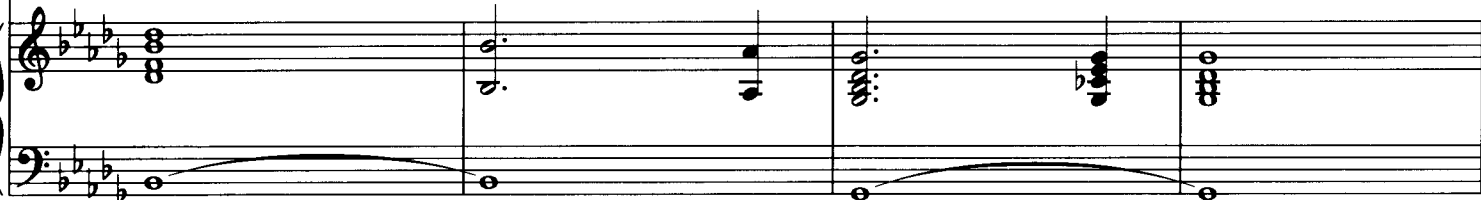


- bed you're on view \_ so nev-er com - pro-mise \_ ac - cept no sub - sti -



Ah

Ah



Db/Ab



Ab



Ebm7



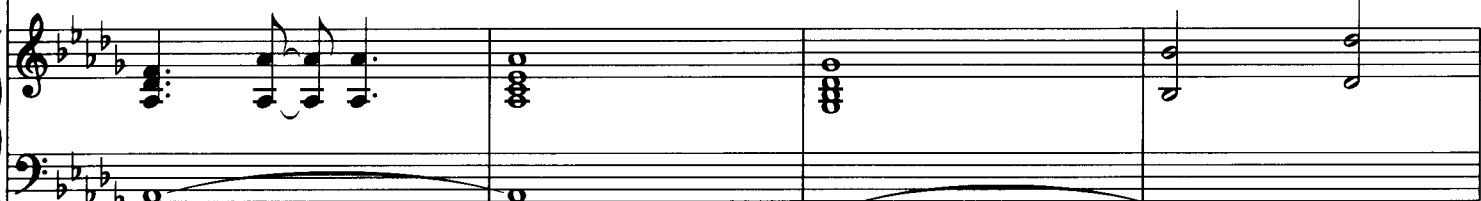
tute \_ I would rath - er wear \_ a bar - rel than con -



Ah

Ah

Ah



Bbm



Gb



Ab5

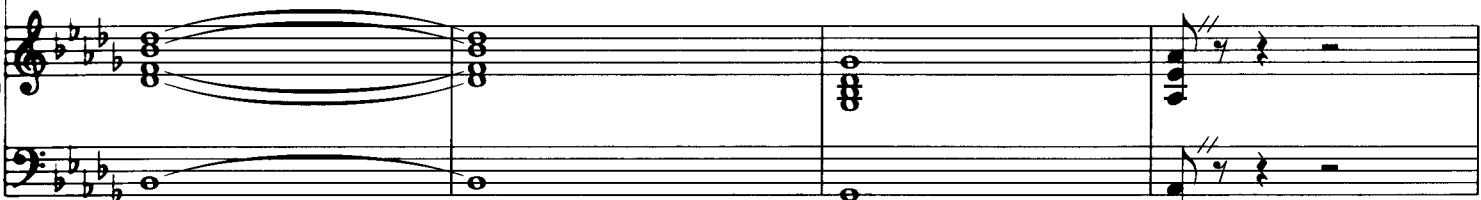


serv - a - tive \_ ap - par - el for \_ dress \_ has al - ways been \_ my strong - est



Ah

Ah



Solid R&B (♩ = ♩<sup>3</sup>)

Db

Bbm



suit

O - ver - wear, \_

un - der - wear, \_

Gb

Cb/Gb

Gb

Ab5 4fr



Stay - ing in \_

an - y - time, \_

an - y - where \_

Db

Gb/Db 4fr

Db

Bbm



or hit - ting town - wards \_ From the top \_ and work - ing \_ down -

Oo

Oo

Oo

Ah! \_

Oo

Oo

G♭
C♭/G♭
G♭
D♭

- wards I en - sure that eve - ry stitch is stitched in — time  
 Oo Ah! — Oo Oo Oo Ah! — Is stitched \_ in time

G♭/D♭
D♭

Wheth - er wig — or hat or — tur - ban Wheth - er clad —  
 Oo Oo Oo Ah! —

B♭m
G♭
C♭/G♭

— bou - doir or ur - ban Not to strut your stuff out -  
 Oo Oo Oo Ah! — Oo Oo

Gb

Db

Fm7

ra-geous - ly's - a crime - And the few who are in - vit -

Oo Ah! - Such - a crime! - Oo

Bbm

- ed To my ward - robe are de - light - ed as they

o - ver - wear, - Oo un - der - wear, -

Gb

Cb/Gb

Gb

Db/Ab 4fr

wan - der through - my - things - to find en - route -

Oo an - y - time, - We're wan - der-ing



That in neg - li - gee or - formal I am an -

through your things - Oo for - mal for - mal

SOLO:

neg - li - gee



- y - thing - but nor - mal That - dress - has al - ways - been -

Oo nor - mal nor - mal Ooo ah!

an - y - thing but nor - mal Ooo ah!



Db



my strong - est suit

*f* O - ver-wear, un - der-wear, an - y - time, an - y - where

Bbm



Gb



I am what I wear I said an -

O - ver-wear, un - der-wear, an - y - time, an - y - where O - ver-wear, un - der-wear,

Ab



- y - time An - y - where So bring -

an - y - time, an - y - where O - ver-wear, un - der-wear, an - y - time,

Db



Gb/D<sup>b</sup>



Db



B<sup>b</sup>m



me all my fin - est Most au - da - cious my di - vin -

fin - est

G<sup>b</sup>



C<sup>b</sup>/G<sup>b</sup>



G<sup>b</sup>



est Most re - veal - ing most ex - pen - sive and to boot -

di - vin - est Most re - veal -

**3 WOMEN:**

D<sup>b</sup>/A<sup>b</sup>



A<sup>b</sup>



E<sup>b</sup>m



Most ar - rest - ing

ing most ex - pen - sive Most ar - rest - ing Most heart -

Bbm



Ebm



most \_ heart - stop-ping Most free - flow - ing most eye -

Ah

stop-ping heart - stop-ping O - ver - wear, -

Fm7



Bbm



Bbm7/Ab



pop-ping Most ar - rest - ing most heart - stop-ping yeah

un - der - wear, - an - y - time, - an - y - where -

**Straight eighths**

Gb



Ab5



Db7#9



Dress has al - ways been \_ my strong - est suit my strong - est \_

Dress has al - ways been \_

Dress has al - ways been \_ I am what I wear \_

suit \_\_\_\_\_ You know that I am what

I am what I wear \_\_\_\_\_ I am what

Detailed description: This system contains the first two lines of the musical score. The top staff is the vocal line with lyrics. The middle staff is the piano accompaniment. The bottom staff shows guitar chord diagrams for Dbm/Fb (4fr) and Db.

I wear \_\_\_\_\_ Dress has al - ways been my strong - est suit \_\_\_\_\_

I wear \_\_\_\_\_ Dress has al - ways been my strong - est suit \_\_\_\_\_

Detailed description: This system contains the next two lines of the musical score. The top staff is the vocal line with lyrics. The middle staff is the piano accompaniment. The bottom staff shows guitar chord diagrams for Dbm/Fb (4fr) and Db.

N.C.

Db5 4fr Db13 3fr

Detailed description: This system contains the final two lines of the musical score. The top staff is the piano accompaniment. The bottom staff shows guitar chord diagrams for N.C., Db5 (4fr), and Db13 (3fr).

Bbm



Gb9



Musical notation for the first system, featuring a treble and bass clef with various notes and rests.

Bbm7



Musical notation for the second system, featuring a treble and bass clef with various notes and rests.

Gb7



Musical notation for the third system, featuring a treble and bass clef with various notes and rests.

Gb



Gb5



Eb7#9



Guitar solo

Musical notation for the fourth system, featuring a treble and bass clef with various notes and rests.

Db7#9



Musical notation for the fifth system, featuring a treble and bass clef with various notes and rests.

Funk feel

Db



AMNERIS:

So \_\_\_\_\_ bring \_\_\_\_\_ me all my fin -

PALACE WOMEN:

Oh

Bbm



- est Most au - da - cious my di - vin - est Most re - veal -

my fi - nest

di - vin - est

Gb



Cb/Gb



Gb



Db/Ab



4fr

- ing most ex - pen - sive and to boot \_\_\_\_\_

3 WOMEN:

Most re - veal <sup>3</sup> ing most ex -

Ab



Ebm



Most ar - rest - ing most heart - stop - ping Most free -  
 pens - ive Most ar - rest - ing Ow Most free -

Bbm



Gb



Ab5



flow - ing most \_ eye - pop - ping \_ Dress has al - ways \_ been \_ my strong - est  
 flow - ing most \_ eye - pop - ping Dress has al - ways been \_

Db7#9



suit my strong - est suit \_\_\_\_\_ You know that  
 I am what I wear \_ I am what I wear \_\_\_\_\_

I am what I wear \_\_\_\_\_ Dress has al - ways been

I am what I wear \_\_\_\_\_ Dress has al - ways been

my strong - est my strong - est my strong - est

my strong - est suit \_\_\_\_\_

**Gb**

my strong - est my strong - est my strong - est suit.

my strong - est my strong - est my strong - est suit.

**Db7#9**