

The girl is mine

Words and Music by
MICHAEL JACKSON

Moderately slow, in 2 ($\text{♩} = \overset{3}{\text{♩}}$)

Amaj9



D6/E



Amaj9



D/E



mf

Amaj9



D6/E



Amaj9



D/E



Amaj9



D6/E



Ev - 'ry night she walks_ right in ___ my dreams, since I
un - der - stand_ the way ___ you think, say - ing
build your hopes_ to be ___ let down, 'cause I

Amaj9



D6/E



Amaj9



D6/E



met her from the start. I'm so proud I am the on -
 that she's yours, not mine. Send - ing ros - es and your sil -
 real - ly feel it's time. I know she'll tell you I'm the one

Amaj9



F#7sus4



ly one who is spe - cial in her heart. The girl is mine,
 ly dreams, real - ly just a waste of time, be - cause she's mine,
 for her, 'cause she said I blow her mind. The girl is mine,

Bm7



Bm7/E



the dog - gone girl is mine.
 the dog - gone girl is mine.
 the dog - gone girl is mine.

Amaj9

D6/E

Amaj9

F#7sus4

Amaj9 guitar diagram: 0 2 2 2 2 2
 D6/E guitar diagram: 0 0 0 2 2 2
 Amaj9 guitar diagram: 0 2 2 2 2 2
 F#7sus4 guitar diagram: 0 2 2 2 2 2

Bm7

Bm7/E

Bm7 guitar diagram: 0 2 2 3 2 2
 Bm7/E guitar diagram: 0 2 2 3 2 2

I know she's mine, —
 Don't waste your time, —
 Don't waste your time, — } be - cause the

Amaj9

D6/E

To Coda

Amaj9 guitar diagram: 0 2 2 2 2 2
 D6/E guitar diagram: 0 0 0 2 2 2

dog - gone girl is mine. —

Amaj9

D/E

1.

2.

Amaj9 guitar diagram: 0 2 2 2 2 2
 D/E guitar diagram: 0 2 2 2 2 2

I don't I love you

Amaj9



D6/E



Take you an - y - where.

more than he. _____

Amaj9



Lov - ing we _____

Well, I love you end - less - ly. _____

D6/E



will share.

Cmaj9



So come and go with me, two on the town. _____

Fmaj7



D/E



E6



But we both can - not have — her, so it's



D/E



E6



D/E



E6



one or the oth - er. And one day you'll dis - cov - er that she's



D/E



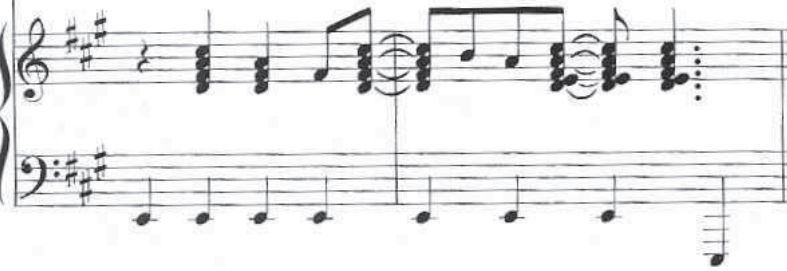
D. S. al Coda

my girl for - ev - er and ev - er.

Coda



Ah, — don't



Repeat (vocal ad lib) and fade

Bmaj9



E6/F#



Bmaj9



E/F#

