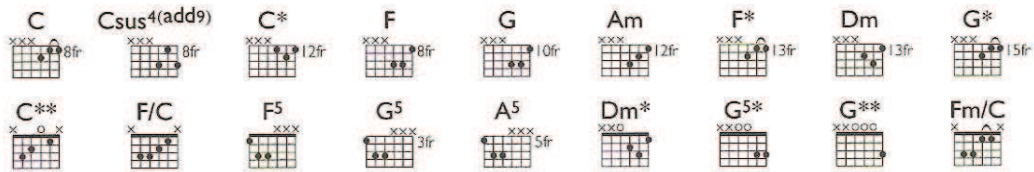


# GUIDING LIGHT

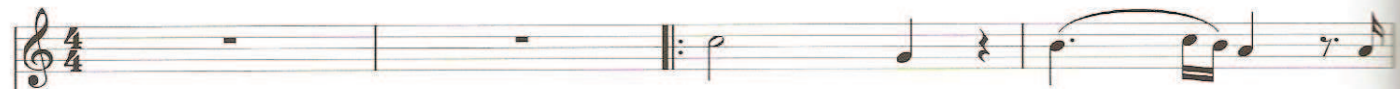
Words and Music by Matthew Bellamy



♩ = 74

(C)

(Am)



1. Pure hearts stum - ble, in  
2. Loved by num - bers, you're

2° Bass Guitar



Fig. 1  
w/fuzz



Drums

Synth. Strings



Fig. 2

(Dm7)

(Dm)

(Gsus4)

(G)

(Am)

(G)



my hands they crum - ble. Fra - gile, and  
lo - sing life's won - der. Touch like

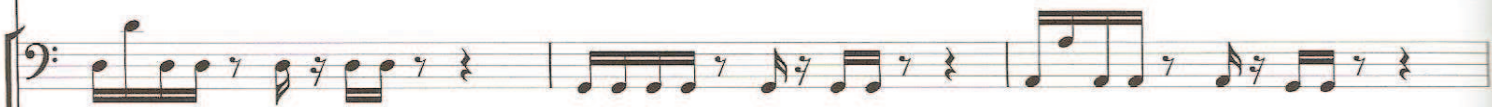


Fig. 1

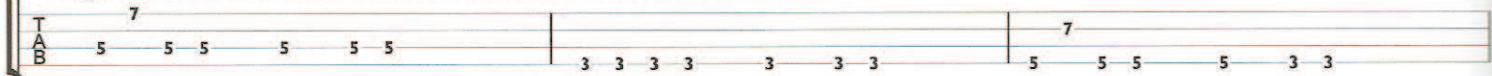


Fig. 2

(C) (F) (C) (G) I. (C) (Csus4(add9))

8  
Musical staff with treble clef and notes.

stripped to the core, I can't hurt you a ny more.  
stran - gers; de - tached, I can't feel you a ny -

Musical staff with bass clef and notes.

Fig. 1

TAB 5 3 3 3 3 | 5 3 3 3 3 3 3 | 5 3 3 3 3 3 3

Musical staff with treble clef and chords.

Fig. 2

(C) 2. C Csus4(add9) C\* Csus4(add9)

11  
Musical staff with treble clef and notes.

- (ny) more.

Electric Guitar I  
w/clean bright tone  
TAB 8 8 8 8 8 8 8 8 8 8 10 10 8 10 | 12 12 12 12 12 12 12 12 12 12 12 10 10 12 10  
8 8 8 8 8 8 8 8 8 8 8 8 8 8 | 13 13 13 13 13 13 13 13 13 13 13 8 8 13 8  
9 9 9 9 9 9 9 9 9 9 9 10 10 9 10 | 12 12 12 12 12 12 12 12 12 12 12 10 10 12 10

Bass Gtr.  
Musical staff with bass clef and notes.

Fig. 3

TAB 5 3 3 3 3 3 3 | 5 3 3 3 3 3 3 | 5 3 3 3 3 3 3

Synth. Strings  
Musical staff with treble clef and notes.

Fig. 2

14

C Csus4(add9) C\*

Fig. 3

TAB

|   |   |   |   |   |   |   |   |   |   |   |   |    |    |   |    |
|---|---|---|---|---|---|---|---|---|---|---|---|----|----|---|----|
| 8 | 8 | 8 | 8 | 8 | 8 | 8 | 8 | 8 | 8 | 8 | 8 | 10 | 10 | 8 | 10 |
| 8 | 8 | 8 | 8 | 8 | 8 | 8 | 8 | 8 | 8 | 8 | 8 | 8  | 8  | 8 | 8  |
| 9 | 9 | 9 | 9 | 9 | 9 | 9 | 9 | 9 | 9 | 9 | 9 | 10 | 10 | 9 | 10 |

|    |    |    |    |    |    |    |    |    |    |    |    |    |    |    |    |
|----|----|----|----|----|----|----|----|----|----|----|----|----|----|----|----|
| 12 | 12 | 12 | 12 | 12 | 12 | 12 | 12 | 12 | 12 | 12 | 12 | 12 | 12 | 12 | 12 |
| 13 | 13 | 13 | 13 | 13 | 13 | 13 | 13 | 13 | 13 | 13 | 13 | 13 | 13 | 13 | 13 |
| 12 | 12 | 12 | 12 | 12 | 12 | 12 | 12 | 12 | 12 | 12 | 12 | 12 | 12 | 12 | 12 |

16

1° F G Am F\*  
2° F5 G5 A5 F5

(1.) sun - - - shine  
(2.) com - - - fort,

trapped in our hearts, it could  
warmth can't be found, I still

1° Elec. Gtr. I

TAB

|    |    |    |    |    |    |    |    |    |    |    |    |    |    |    |    |
|----|----|----|----|----|----|----|----|----|----|----|----|----|----|----|----|
| 8  | 8  | 8  | 8  | 8  | 8  | 8  | 8  | 10 | 10 | 10 | 10 | 10 | 10 | 10 | 10 |
| 10 | 10 | 10 | 10 | 10 | 10 | 10 | 10 | 12 | 12 | 12 | 12 | 12 | 12 | 12 | 12 |
| 10 | 10 | 10 | 10 | 10 | 10 | 10 | 10 | 12 | 12 | 12 | 12 | 12 | 12 | 12 | 12 |

|    |    |    |    |    |    |    |    |    |    |    |    |    |    |    |    |
|----|----|----|----|----|----|----|----|----|----|----|----|----|----|----|----|
| 12 | 12 | 12 | 12 | 12 | 12 | 12 | 12 | 13 | 13 | 13 | 13 | 13 | 13 | 13 | 13 |
| 13 | 13 | 13 | 13 | 13 | 13 | 13 | 13 | 13 | 13 | 13 | 13 | 13 | 13 | 13 | 13 |
| 14 | 14 | 14 | 14 | 14 | 14 | 14 | 14 | 14 | 14 | 14 | 14 | 14 | 14 | 14 | 14 |

2° Elec. Gtr. I

TAB

|   |  |  |  |   |   |   |  |   |   |   |  |   |   |   |
|---|--|--|--|---|---|---|--|---|---|---|--|---|---|---|
| 3 |  |  |  | X | X | 5 |  | X | X | 7 |  | X | X | 3 |
| 1 |  |  |  | X | X | 3 |  | X | X | 5 |  | X | X | 1 |

Bass Gtr.

TAB

|   |  |  |  |  |  |  |  |   |  |  |  |  |  |  |
|---|--|--|--|--|--|--|--|---|--|--|--|--|--|--|
| 3 |  |  |  |  |  |  |  | 7 |  |  |  |  |  |  |
| 1 |  |  |  |  |  |  |  | 5 |  |  |  |  |  |  |

18 **C\*** **Csus4(add9)** **C**  
**(C)** **(C)**

rise \_\_\_\_\_  
 reach \_\_\_\_\_ for \_\_\_\_\_ a gain \_\_\_\_\_  
 you. \_\_\_\_\_ } But I'm

lost, \_\_\_\_\_ crushed, \_\_\_\_\_ cold\_ and\_ con - fused with no\_

20 **F** **G** **Am** **F\***  
**F5** **G5** **A5** **F5**

lost, \_\_\_\_\_ crushed, \_\_\_\_\_ cold\_ and\_ con - fused with no\_

22

Dm Dm\* G\* G5\* G\*\* To Coda ♯

gui ding light left

13 13 13 13 13 13 13 13 13 13 13 13 13 13 13 15 15 15 15 15 15 15 15 15 15 15 15 15 15 15 15 15 15

15 15

14 14 14 14 14 14 14 14 14 14 14 14 14 14 14 16 16 16 16 16 16 16 16 16 16 16 16 16 16 16 16 16 16

TAB

3 3

2 2 2 2 2 2 2 2 2 2 2 2 2 2 2 0 0 0 0 0 0 0 0 0 0 0 0 0 0 0 0 0 0 0

0 0

TAB

7

5 5 5 5 5 5 3 3 3 3 3 3 3

24

(C<sup>5</sup>)

side. Mmm.

Elec. Gtr. I

w/clean bright tone & (echo)  
Bass Gtr. plays Fig. 3

13 12 (13) (13) (13) (13) 1 1 0 (1)

TAB

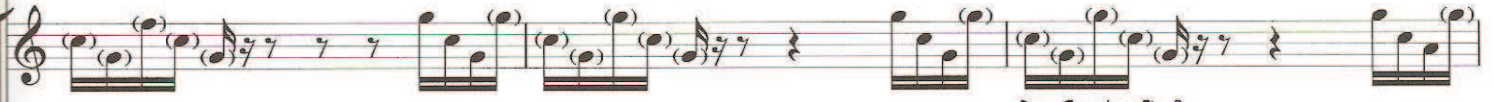
26

C\*\*

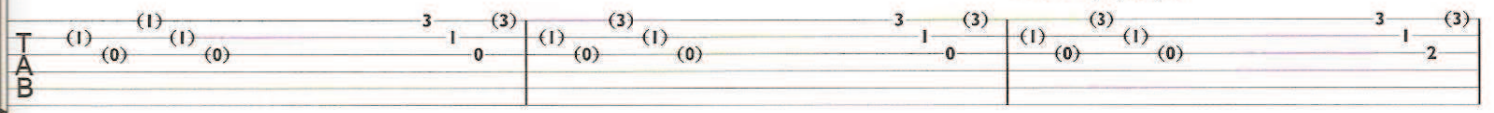
F/C



You were my gui - ding



Bass Gtr. plays Fig. 3

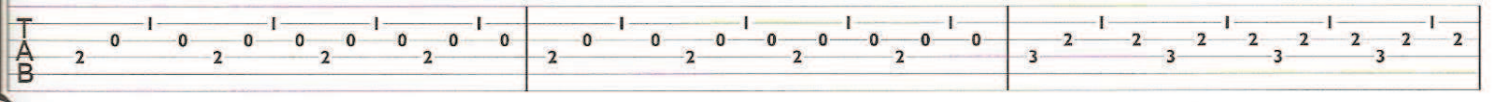


Electric Guitar 2



let ring-----  
w/clean tone & echo

Fig. 4



29

C\*\*



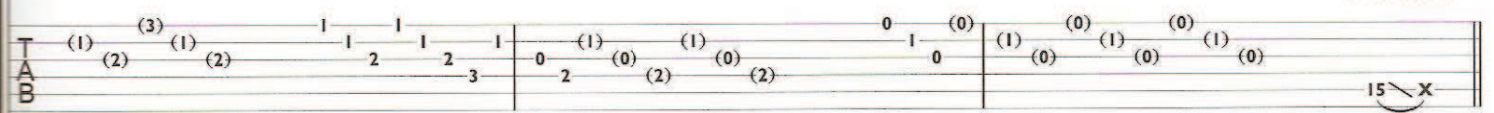
light,

mmm.

Elec. Gtr. I

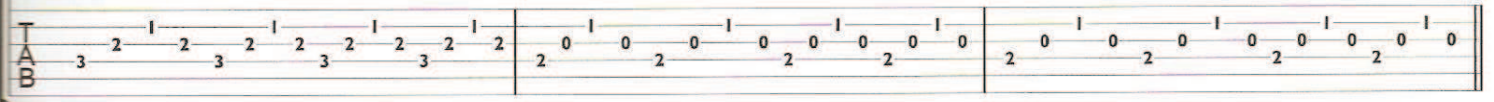


w/ distortion



let ring-----

Fig. 4



32

(C) Elec. Gtr. I

(Am)

(Dm7)

(Dm)

(Gsus4)

(G)

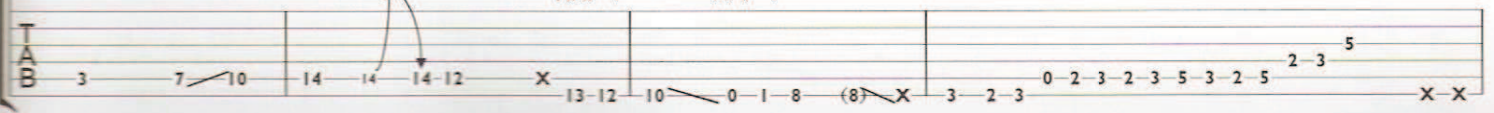


Bass Gtr. plays Fig. 1  
Synth strings play Fig. 2

P.M.-1

P.M.-1

harm.



36 (Am) (G) (C) (F)

Oh, oh,

TAB

13 13 13 13 15 15 15 17 15 15 13 13 13 13 13 14 14

38 (C) (G) (C) (Csus4(add9)) (C) *D. al Coda*

mmm, ah!

And

TAB

12 12 10 12 12 12 12 10 10 8 10 10 10 12 1/2 (12) 1/2 X

◆ Coda

41 C\*\*

(in) - side.

**Elec. Gtr. 1**

w/clean bright tone & (echo)  
Bass Gtr. plays Fig. 3 - cont. til end

TAB

1 0 2 3 | (1) 0 2 3 | (1) 0 2 3 | (1) 0 2 3 | 1 0 2 3 | (1) 0 2 3 | (1) 0 2 3 | (1) 0 2 3 | 3 1 0

**Elec. Gtr. 2**

w/clean tone & echo  
let ring - - - - -

TAB

2 0 1 0 2 0 1 0 2 0 1 0 | 2 0 1 0 2 0 1 0 2 0 1 0 | 2 0 1 0 2 0 1 0 2 0 1 0 | 2 0 1 0 2 0 1 0 2 0 1 0

44

F/C

You're my — gui - ding — light. —

*Elec. Gtr. 2 ad-lib. Fig. 4*

TAB (1) (3) (1) (0) 3 1 (3) (1) (3) (1) (0) 3 1 (3) (1) (3) (1) (2) (2) 1 1 1 2 3

let ring-----

TAB 2 0 1 0 2 0 1 0 2 0 1 0

47

C\*\*

F/C

You're my — gui - ding —

*Elec. Gtr. 1*

*Elec. Gtr. 2 ad-lib Fig. 4*

TAB 0 2 (1) (0) (1) (0) (2) 0 1 (0) (1) (0) (1) (0) (1) (0) 3 1 (3) (1) (3) (1) (0) 3 1 (3)

50

C\*\*

light. — And there's no —

TAB (1) (3) (1) (2) 1 1 1 2 3 0 2 (1) (0) (1) (0) (2) 0 1 (0) (1) (0) (1) (0) 3 1 (3)



53 F/C Fm/C C\*\*

gui - ding light left in side.

Elec. Gtr. 1

TAB (1) (3) (1) (0) 3 1 2 (1) (2) (3) (1) (2) 1 1 1 1 3 0 (1) (0) (1) (0) (2) 0 1 0

Elec. Gtr. 2

let ring----- let ring----- let ring-----

Fig. 5-----

TAB 3 2 1 2 3 2 1 2 3 2 1 2 3 1 1 3 1 3 1 1 2 0 1 0 2 0 1 0 2 0 1 0

56 F/C

And there's no gui - ding

Elec. Gtr. 2 ad-lib Fig. 5

TAB (1) (0) (1) (0) (1) (0) 3 1 0 (1) (3) (1) (0) 3 1 2 (3)

let ring-----

Fig. 5-----

TAB 2 0 1 0 2 0 1 0 2 0 1 0 2 0 1 0

58 Fm/C C\*\*

light in our lives.

Elec. Gtr. 1

TAB (1) (3) (1) (2) 1 1 1 1 3 0 (1) (0) (1) (0) (2) 0 1 0 (1) (0) (1) (0) (1) (0) 0 1 0