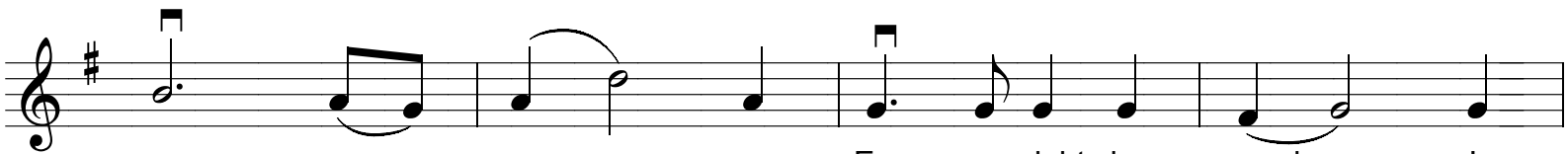
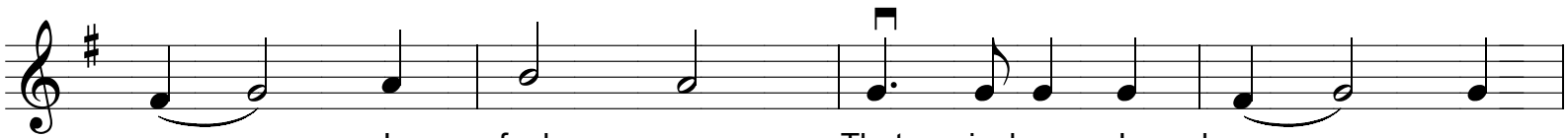


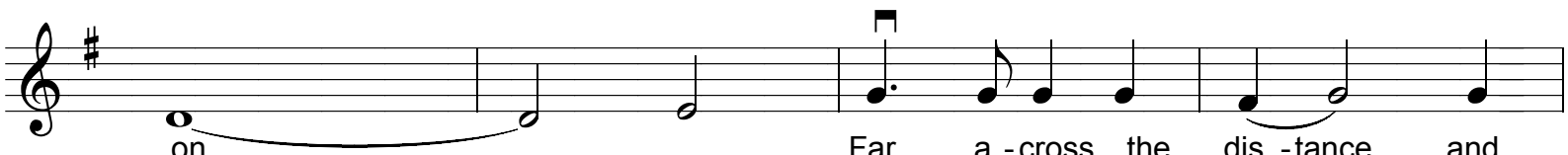
Theme from "TITANIC"



Ev - ry night in my dreams I



see you I feel you. That is how I know you go



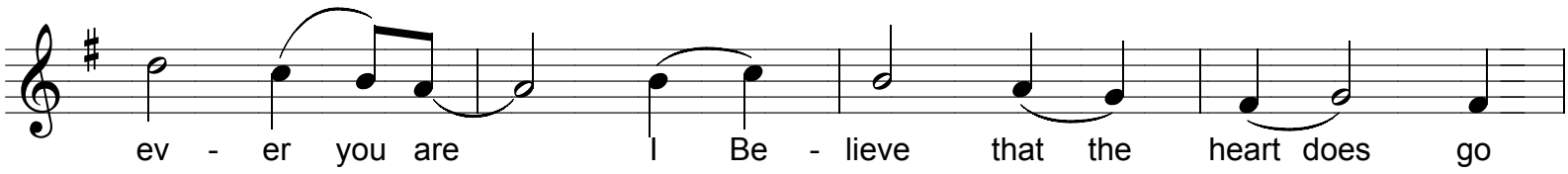
on. Far a - cross the dis - tance and



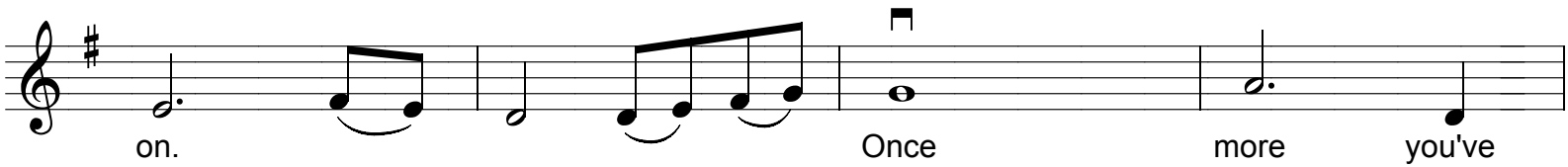
spa - ces be - tween us. You have come to show you go -




on. Near, Far, where -



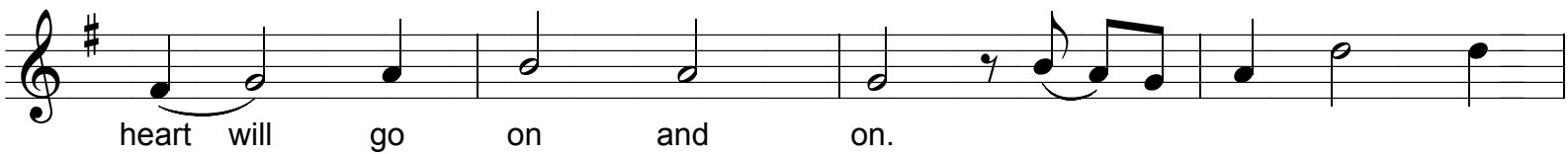
ev - er you are I Be - lieve that the heart does go



on. Once more you've



o - pened the door and you're here in my heart and my



heart will go on and on.

