

# Bicycle Race

By Freddie Mercury

Voice

Bi - cy - cle, bi - cy - cle, bi - cy - cle I want to ride my

Piano

$E^b$   $B^b+$   $B^bmi$   $A^b$   $B^bmi$

3

bi - cy - cle, bi - cy - cle, bi - cy - cle. I

Pno.

D B  $A^b$

5

want to ride my bi - cy - cle, I want to ride my bike. I

Pno.

B $\flat$ mi A $\flat$  B $\flat$ mi A $\flat$

7

want to ride my bi - cy - cle, I want to ride it

Pno.

B $\flat$ mi A $\flat$  B $\flat$ mi

9

where I like. You say black, I say white, you say bark, I say bite. You say shark,  
I say caine, you say John, I say Wayne. Hot dog

Pno.

A $\flat$  B $\flat$ mi

11



I say hey, man, Jaws was nev - er my scene and I don't like Star Wars. You say Rolls,  
I say "Cool it, man" I don't wanna be the pres - i - dent of A meri - ca. You say smile

Pno.

11



G $\flat$ 7 Gdim Ami B $\flat$ mi

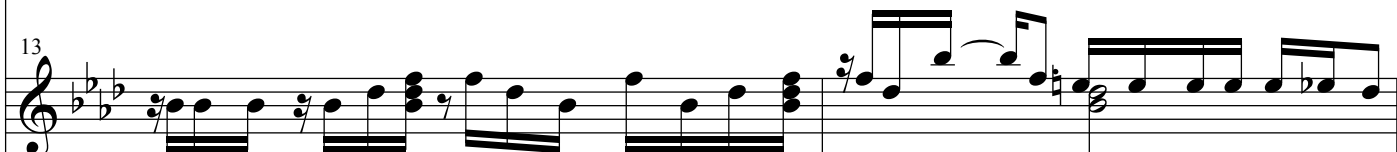
13



I sayRoyce, you saycar, giveme<sup>3</sup> a choiceyou say Lord, I sayChrist, I don't be - lievin Pe - ter Pan,  
I saycheese, Cart - i - er, I sayplease. In come tax, I say Je - sus I don'twanna-be a candidate for

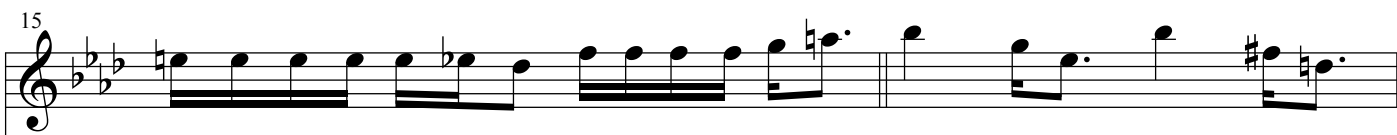
Pno.

13



G $\flat$ 7

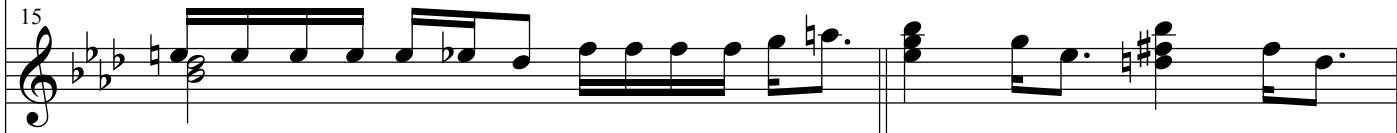
15



Frank - en - stein or Sup - er - man. All I wan - na do is bi - cy - cle, bi - cy - cle,  
Vi - et - name or Wat - er - gate. All - I wan - na do is

Pno.

15



Gdim F E $\flat$  D<sup>+</sup>

17

bi - cy - cle, I want to ride my bi - cy - cle, bi - cy - cle,

Pno.

B $\flat$ mi A $\flat$  B $\flat$ mi D B

19

bi - - - cy - cle, I want to ride my bi - cy - cle, I

Pno.

A $\flat$  B $\flat$ mi A $\flat$

21

want to ride my bike. I want to ride my - bi - cy - cle, I

Pno.

B $\flat$ mi A $\flat$  B $\flat$ mi A $\flat$

23

want to ride my Bi - cy - cle rac - es are com - ing your way, so for -

Pno.

B $\flat$ mi Gmi7 C7

25

get all your du - ties, oh, yeh. Fat bot - tomed girls, they'll be rid - ing to - day so look

Pno.

F B $\flat$  Gmi7 C7

27

out for those beau - ties, oh yeh. On your marks, get set go.

Pno.

F B $\flat$  A Dmi

29

Vocal staff for measures 29-30. The melody starts with a whole rest in measure 29 and then consists of eighth notes: G4, A4, Bb4, C5, Bb4, A4, G4, F4, E4, D4.

Bi - cy - cle race, bi - cy - cle race, bi - cy - cle race.

Piano accompaniment for measures 29-30. The right hand plays chords and moving lines, while the left hand plays a steady eighth-note bass line. Chords are G, C, and G7.

31

Vocal staff for measures 31-32. Measure 31 has a whole rest. Measure 32 has a half note G4, a quarter note A4, and a quarter note Bb4.

Bi - - cy - cle, bi - - cy - cle,

Piano accompaniment for measures 31-32. Measure 31 has a whole rest. Measure 32 has a half note G4, a quarter note A4, and a quarter note Bb4. Chords are F and C.

33

Vocal staff for measures 33-34. Measure 33 has a half note G4, a quarter note A4, and a quarter note Bb4. Measure 34 has a half note C5, a quarter note Bb4, and a quarter note A4.

bi - cy - cle, I want to ride my bi - cy - cle, bi - cy - cle,

Piano accompaniment for measures 33-34. The right hand plays chords and moving lines, while the left hand plays a steady eighth-note bass line. Chords are Ab7, Ab, Bbmi, D, and B.

35

bi - cy - cle, bi - cy - cle, bi - cy - cle, bi - cy - cle race.

Pno.

G C

38

Pno.

D A D A

41

Pno.

D B E

43

Vocal line starting at measure 43. The key signature has two sharps (F# and C#). The time signature changes from 3/4 to 4/4. The melody is mostly whole notes with some rests. A double bar line with repeat dots appears at the end of measure 44.

You say coke,

Pno.

43

Piano accompaniment for measures 43-45. The right hand features a melodic line with eighth notes and a final chord. The left hand plays a rhythmic accompaniment of eighth notes. A chord of F# is indicated in measure 43. A double bar line with repeat dots is at the end of measure 44.

⊕ CODA

45

Vocal line for measure 45. The key signature has three flats (Bb, Eb, Ab). The melody consists of eighth notes and a final half note with a fermata.

want to ride it where I like.

⊕ CODA

45

Pno.

Piano accompaniment for measure 45. The right hand has a melodic line with eighth notes and a final chord. The left hand has a rhythmic accompaniment of eighth notes. Chords A<sup>b</sup>, B<sup>b</sup>mi, and A<sup>b</sup> are indicated. A double bar line with repeat dots is at the end of measure 45. A final chord is shown below the staff.